



Child protection and safeguarding policy (including safer recruitment, allegations against staff and low-level concerns)

Policy Date:	September 2025
Approved by Trustees:	October 2025
Date of next review:	September 2026



Contents

Important contacts	3
1. Aims	3
2. Legislation and statutory guidance	3
3. Definitions	5
4. Equality statement	5
5. Roles and responsibilities	6
6. Confidentiality	10
7. Recognising abuse and taking action	11
8. Online safety and the use of mobile technology	20
9. Notifying parents or carers	23
10. Pupils with special educational needs, disabilities or health issues	22
11. Pupils with a social worker	22
12. Looked-after and previously looked-after children	23
13. Pupils who are lesbian, gay, bisexual or gender questioning	23
14. Complaints and concerns about school safeguarding policies	24
15. Record-keeping	24
16. Training	25
17. Monitoring arrangements	26
18. Serious Incidents and Post Incident Reviews	26
19. Links with other policies	26
Appendix 1: types of abuse	30
Appendix 2: safer recruitment and DBS checks – policy and procedures	31
Appendix 3: allegations of abuse made against staff	36
Appendix 4: specific safeguarding issues	43
Appendix 5: LADO response flowchart	52
Appendix 6: Wellbeing provision map	53
Appendix 7: Information for visitors	55
Appendix 8: Encompass	58
Appendix 9: Glossary of terms	59

Important contacts

ROLE/ORGANISATION	NAME	CONTACT DETAILS
AALT Director of Safeguarding and Attendance	Sharron Diffley	Sharron.Diffley@achieveandlearntrust.com
DSL Altrincham College	Jacqui Hudson-Kirkham	jhk@altrinchamcollege.com
Headteacher	Kim Earle	Headteacher@altrinchamcollege.com
Head of School	Andrew Keegan	akn@altrinchamcollege.com
Local Authority Designated Officer (LADO)	Anita Hopkins	Trafford First Response – 0161 912 5125 Referral Form https://trafford-framework.egovhub.net/ALLEGATIONOFPROFESSIONALABUSE/launch
Chair of Governors	Cliff Broom	Chairofgovernors@altrinchamcollege.com
Channel helpline	020 7340 7264	
AALT CEO	Kim Earle	ceo@achieveandlearntrust.com

1. Aims and Ethos

The safeguarding and welfare of students at Altrincham College is of the highest priority. Nothing is more important than safeguarding. This policy has been developed to ensure that all adults in Altrincham College are aware of their responsibilities in working together to promote a culture of vigilance ensuring that signs and symptoms of abuse and potential abusers are identified at the earliest opportunity.

Altrincham College believes that safeguarding and promoting the welfare of children and young people goes beyond implementing basic child protection procedures. It is an integral part of all activities and applies at all times when Altrincham College is providing services or activities directly under the management of our staff. As a school we aim to create a safe learning environment where children and adults feel safe, secure and valued, and know that any concerns they have will be listened to and taken seriously. This policy complements and supports other relevant school and Local Authority policies.

The Trust and school aim to ensure that:

- Appropriate action is taken in a timely manner to safeguard and promote children's welfare
- All staff are aware of their statutory responsibilities with respect to safeguarding
- All staff understand that at Altrincham College, we aim to go beyond compliance with respect to safeguarding
- Staff are properly trained in recognising and reporting safeguarding issues

2. Legislation and statutory guidance

This policy is based on the Department for Education's (DfE's) statutory guidance [Keeping Children Safe in Education \(2025\)](#) and [Working Together to Safeguard Children \(2023\)](#), and the [Governance Handbook](#). We

comply with this guidance and the arrangements agreed and published by our 3 local safeguarding partners (see section 3).

This policy is also based on the following legislation:

- Part 3 of the schedule to the [Education \(Independent School Standards\) Regulations 2014](#), which places a duty on academies and independent schools to safeguard and promote the welfare of pupils at the school
- [The Children Act 1989](#) (and [2004 amendment](#)), which provides a framework for the care and protection of children
- Section 5B(11) of the Female Genital Mutilation Act 2003, as inserted by section 74 of the [Serious Crime Act 2015](#), which places a statutory duty on teachers to report to the police where they discover that female genital mutilation (FGM) appears to have been carried out on a girl under 18
- [Statutory guidance on FGM](#), which sets out responsibilities with regards to safeguarding and supporting girls affected by FGM
- [The Rehabilitation of Offenders Act 1974](#), which outlines when people with criminal convictions can work with children
- Schedule 4 of the [Safeguarding Vulnerable Groups Act 2006](#), which defines what 'regulated activity' is in relation to children
- [Statutory guidance on the Prevent duty](#), which explains schools' duties under the Counter-Terrorism and Security Act 2015 with respect to protecting people from the risk of radicalisation and extremism
- [The Human Rights Act 1998](#), which explains that being subjected to harassment, violence and/or abuse, including that of a sexual nature, may breach any or all of the rights which apply to individuals under the [European Convention on Human Rights](#) (ECHR)
- [The Equality Act 2010](#), which makes it unlawful to discriminate against people regarding particular protected characteristics (including disability, sex, sexual orientation, gender reassignment and race). This means our governors and Headteacher or Head of School should carefully consider how they are supporting their pupils with regard to these characteristics. The Act allows our school to take positive action to deal with particular disadvantages affecting pupils (where we can show it's proportionate). This includes making reasonable adjustments for disabled pupils. For example, it could include taking positive action to support girls where there's evidence that they're being disproportionately subjected to sexual violence or harassment
- [The Public Sector Equality Duty \(PSED\)](#), which explains that we must have due regard to eliminating unlawful discrimination, harassment and victimisation. The PSED helps us to focus on key issues of concern and how to improve pupil outcomes. Some pupils may be more at risk of harm from issues such as sexual violence; homophobic, biphobic or transphobic bullying; or racial discrimination

This policy also complies with our funding agreement and articles of association.

3. Definitions

A full glossary of terms and acronyms commonly used in safeguarding can be found in Appendix 9 of this policy, however some commonly used terms in this policy can be found below;

Safeguarding and promoting the welfare of children means:

- Providing help and support to meet the needs of children as soon as problems emerge
- Protecting children from maltreatment whether that is within or outside the home, including online
- Preventing impairment of children's mental and physical health or development
- Ensuring that children grow up in circumstances consistent with the provision of safe and effective care
- Taking action to enable all children to have the best outcomes

Child protection is part of this definition and refers to activities undertaken to protect specific children who are suspected to be suffering, or likely to suffer, significant harm. This includes harm that occurs inside or outside the home, including online.

Abuse is a form of maltreatment of a child and may involve inflicting harm or failing to act to prevent harm. Appendix 1 explains the different types of abuse.

Neglect is a form of abuse and is the persistent failure to meet a child's basic physical and/or psychological needs, likely to result in the serious impairment of the child's health or development. Appendix 1 defines neglect in more detail.

Sharing of nudes and semi-nudes (also known as sexting or youth-produced sexual imagery) is where children share nude or semi-nude images, videos or live streams. This also includes pseudo-images that are computer-generated images that otherwise appear to be a photograph or video.

Children includes everyone under the age of 18.

The following 3 **safeguarding partners** are identified in Keeping Children Safe in Education (and defined in the Children Act 2004, as amended by chapter 2 of the Children and Social Work Act 2017). They will make arrangements to work together to safeguard and promote the welfare of local children, including identifying and responding to their needs:

- The local authority (LA) - Trafford
- Integrated care boards (previously known as clinical commissioning groups) for an area within the LA
- The chief officer of police for a police area in the LA area – Greater Manchester Police

Victim is a widely understood and recognised term, but we understand that not everyone who has been subjected to abuse considers themselves a victim or would want to be described that way. When managing an incident, we will be prepared to use any term that the child involved feels most comfortable with.

Alleged perpetrator(s) and **perpetrator(s)** are widely used and recognised terms. However, we will think carefully about what terminology we use (especially in front of children) as, in some cases, abusive behaviour can be harmful to the perpetrator too. We will decide what's appropriate and which terms to use on a case-by-case basis.

4. Equality statement

Some children have an increased risk of abuse, both online and offline, and additional barriers can exist for some children with respect to recognising or disclosing it. We are committed to anti-discriminatory practice and recognise children's diverse circumstances. We ensure that all children have the same protection, regardless of any barriers they may face.

We give special consideration to children who:

- Have special educational needs and/or disabilities (SEND) or health conditions (see section 10)
- Are young carers
- May experience discrimination due to their race, ethnicity, religion, gender identification or sexuality
- Have English as an additional language (EAL)
- Are known to be living in difficult situations – for example, temporary accommodation or where there are issues such as substance abuse or domestic violence
- Are at risk of female genital mutilation (FGM), sexual exploitation, forced marriage, or radicalisation
- Are asylum seekers
- Are at risk due to either their own or a family member's mental health needs
- Are looked after or previously looked after (see section 12)
- Are missing or absent from education for prolonged periods and/or repeat occasions
- Whose parent/carer has expressed an intention to remove them from school to be home educated

5. Roles and responsibilities

Safeguarding and child protection is **everyone's** responsibility. This policy applies to all staff, volunteers and governors in the school and is consistent with the procedures of the 3 safeguarding partners. Our policy and procedures also apply to extended school and off-site activities.

The school plays a crucial role in preventative education. This is in the context of a whole-school approach to preparing pupils for life in modern Britain, and a culture of zero tolerance of sexism, misogyny/misandry, homophobia, biphobia, transphobia and sexual violence/harassment. This will be underpinned by our:

- Behaviour policy
- Pastoral support system
- Planned programme of relationships, sex and health education (RSHE), which is inclusive and delivered regularly, tackling issues such as:
 - Healthy and respectful relationships
 - Boundaries and consent
 - Stereotyping, prejudice and equality
 - Body confidence and self-esteem
 - How to recognise an abusive relationship (including coercive and controlling behaviour)
 - The concepts of, and laws relating to, sexual consent, sexual exploitation, abuse, grooming, coercion, harassment, rape, domestic abuse, so-called honour-based violence such as forced marriage and FGM and how to access support
 - What constitutes sexual harassment and sexual violence and why they're always unacceptable

5.1 All staff

All staff will:

- Read and understand part 1 and annex B of the Department for Education's statutory safeguarding guidance, [Keeping Children Safe in Education](#), and review this guidance at least annually
- Sign a declaration at the beginning of each academic year to say that they have reviewed and understood the guidance
- Read and understand this Safeguarding and Child Protection Policy, and review it at least annually

- Sign a declaration at the beginning of each academic year to say that they have reviewed and understood this policy
- Reinforce the importance of online safety when communicating with parents and carers. This includes making parents and carers aware of what we ask children to do online (e.g. sites they need to visit or who they'll be interacting with online)
- Provide a safe space for pupils who are LGBTQ+ to speak out and share their concerns

All staff will be aware of:

- Our systems that support safeguarding, including this child protection and safeguarding policy, the Achieve and Learn Trust code of conduct, the role and identity of the designated safeguarding lead (DSL) and deputies, the behaviour policy, online safety that includes the expectations, applicable roles and responsibilities in relation to filtering and monitoring, and the safeguarding response to children who go missing from education
- The early help assessment process (sometimes known as the common assessment framework) and their role in it, including identifying emerging problems, liaising with the DSL, and sharing information with other professionals to support early identification and assessment
- The process for making referrals to local authority children's social care and for statutory assessments that may follow a referral, including the role they might be expected to play
- What to do if they identify a safeguarding issue or a child tells them they are being abused or neglected, including specific issues such as FGM, and how to maintain an appropriate level of confidentiality while liaising with relevant professionals
- The signs of different types of abuse, neglect and exploitation, including domestic and sexual abuse (including controlling and coercive behaviour, as well as parental conflict that is frequent, intense, and unresolved), as well as specific safeguarding issues, such as child-on-child abuse, grooming, child sexual exploitation (CSE), child criminal exploitation (CCE), conspiracy theory, disinformation and misinformation, indicators of being at risk from or involved with serious violent crime, FGM, radicalisation and serious violence (including that linked to county lines)
- New and emerging threats, including online harm including misuse of artificial intelligence, grooming, sexual exploitation, criminal exploitation, radicalisation, and the role of technology and social media in presenting harm
- The importance of reassuring victims that they are being taken seriously and that they will be supported and kept safe
- The fact that children can be at risk of harm inside and outside of their home, at school and online
- The fact that children who are (or who are perceived to be) lesbian, gay, bisexual or gender questioning (LGBTQ+) can be targeted by other children
- That a child and their family may be experiencing multiple needs at the same time
- What to look for to identify children who need help or protection

Section 16 and appendix 4 of this policy outline in more detail how staff are supported to do this.

5.2 The designated safeguarding lead (DSL)

The DSL is a member of the senior leadership team. Our DSL is Jacqueline Hudson-Kirkham. The DSL takes lead responsibility for child protection and wider safeguarding in the school. This includes online safety and understanding our filtering and monitoring processes on school devices and school networks to keep pupils safe online.

During term time, the DSL will be available during school hours for staff to discuss any safeguarding concerns.

Outside normal school hours, the DSL can be contacted on email at jhk@altrinchamcollege.com or on Whisper; 07860 021 323 ACA1 [+ your message] or at <https://swgfl.org.uk/whisper/aca1/>

When the DSL is absent, the Headteacher, Head or School and Pastoral Managers – will act as cover.

If the DSL is not available, the Trust Director of Safeguarding, Sharron Diffley sharron.diffley@achieveandlearntrust will act as cover (for example, during out-of-hours/out-of-term activities).

The DSL will be given the time, funding, training, resources and support to:

- Provide advice and support to other staff on child welfare and child protection matters
- Take part in strategy discussions and inter-agency meetings and/or support other staff to do so
- Contribute to the assessment of children
- Refer suspected cases, as appropriate, to the relevant body (local authority children's social care, Channel programme, Disclosure and Barring Service, and/or police), and support staff who make such referrals directly
- Have a good understanding of harmful sexual behaviour
- Have a good understanding of the filtering and monitoring systems and processes in place at our school
- Make sure that staff have appropriate Prevent training and induction

The DSL will also:

- Keep the Headteacher and Head of School informed of any issues
- Liaise with local authority case managers and designated officers for child protection concerns as appropriate
- Discuss the local response to sexual violence and sexual harassment with police and local authority children's social care colleagues to prepare the school's policies
- Be confident that they know what local specialist support is available to support all children involved (including victims and alleged perpetrators) in sexual violence and sexual harassment, and be confident as to how to access this support
- Be aware that children must have an 'appropriate adult' to support and help them in the case of a police investigation or search
- Work with the Trust Director of Safeguarding to ensure that the Trust policies and practices with regard to Safeguarding are implemented effectively.

The full responsibilities of the DSL are set out in their job description.

5.3 The governing board

The governing board will:

- Facilitate a whole-school approach to safeguarding, ensuring that safeguarding and child protection are at the forefront of, and underpin, all relevant aspects of process and policy development
- Evaluate and approve this policy at each review, ensuring it complies with the law, and hold the Headteacher or Head of School to account for its implementation
- Be aware of its obligations under the Human Rights Act 1998, the Equality Act 2010 (including the Public Sector Equality Duty), and our school's local multi-agency safeguarding arrangements
- Appoint a senior board level (or equivalent) lead to monitor the effectiveness of this policy in conjunction with the full governing board. This is always a different person from the DSL
- Ensure all staff undergo safeguarding and child protection training, including online safety, and that such training is regularly updated and is in line with advice from the safeguarding partners
- Ensure that the school has appropriate filtering and monitoring systems in place and review their effectiveness. This includes:
 - Making sure that the leadership team and staff are aware of the provisions in place, and that they understand their expectations, roles and responsibilities around filtering and monitoring as part of safeguarding training

- Reviewing the [DfE's filtering and monitoring standards](#), and discussing with IT staff and service providers what needs to be done to support the school in meeting these standards

Make sure:

- The DSL has the appropriate status and authority to carry out their job, including additional time, funding, training, resources and support
- Online safety is a running and interrelated theme within the whole-school approach to safeguarding and related policies
- The DSL has lead authority for safeguarding, including online safety and understanding the filtering and monitoring systems and processes in place
- The school has procedures to manage any safeguarding concerns (no matter how small) or allegations that do not meet the harm threshold (low-level concerns) about staff members (including supply staff, volunteers and contractors). Appendix 3 of this policy covers this procedure
- That this policy reflects that children with SEND, or certain medical or physical health conditions, can face additional barriers to any abuse or neglect being recognised

Where another body is providing services or activities (regardless of whether or not the children who attend these services/activities are children on the school roll):

- Seek assurance that the other body has appropriate safeguarding and child protection policies/procedures in place, and inspect them if needed
- Make sure there are arrangements for the body to liaise with the school about safeguarding arrangements, where appropriate
- Make sure that safeguarding requirements are a condition of using the school premises, and that any agreement to use the premises would be terminated if the other body fails to comply

The Chair of Governors will act as the 'case manager' in the event that an allegation of abuse is made against the Headteacher or Head of School, where appropriate (see appendix 3).

All governors will read Keeping Children Safe in Education in its entirety.

Section 15 of this policy has information on how governors are supported to fulfil their role.

5.4 The Headteacher and Head of School

The Headteacher and Head of School are responsible for the implementation of this policy, including:

Ensuring that staff (including temporary staff) and volunteers:

- Are informed of our systems that support safeguarding, including this policy, as part of their induction
- Understand and follow the procedures included in this policy, particularly those concerning referrals of cases of suspected abuse and neglect

Communicating this policy to parents/carers when their child joins the school and via the school website

Ensuring that the DSL has appropriate time, funding, training and resources, and that there is always adequate cover if the DSL is absent

Acting as the 'case manager' in the event of an allegation of abuse made against another member of staff or volunteer, where appropriate (see appendix 3)

Making decisions regarding all low-level concerns, though they may wish to collaborate with the DSL on this

5.5 Virtual school heads

Virtual school heads have a non-statutory responsibility for the strategic oversight of the educational attendance, attainment and progress of pupils with a social worker. Virtual school heads also have responsibility for promoting the educational achievement of children in kinship care.

They should also identify and engage with key professionals, e.g. DSLs, special educational needs co-ordinators (SENCOs), social workers, mental health leads and others.

6. Confidentiality

Staff should ensure that confidentiality protocols are followed and information is shared appropriately. The Headteacher or Head of School or Designated Safeguarding Lead discloses any information about a pupil to other members of staff on a need to know basis only.

All staff and volunteers must understand that they have a professional responsibility to share information with other agencies in order to safeguard children. All staff and volunteers must be clear with children that they cannot promise to keep secrets. All staff must note that;

- Timely information sharing is essential to effective safeguarding
- Fears about sharing information must not be allowed to stand in the way of the need to promote the welfare, and protect the safety, of children
- The Data Protection Act (DPA) 2018 and the UK GDPR do not prevent, or limit, the sharing of information for the purposes of keeping children safe
- If staff need to share 'special category personal data', the DPA 2018 contains 'safeguarding of children and individuals at risk' as a processing condition that allows practitioners to share information without consent if: it is not possible to gain consent; it cannot be reasonably expected that a practitioner gains consent; or if to gain consent would place a child at risk
- Staff should never promise a child that they will not tell anyone about a report of abuse, as this may not be in the child's best interests
- If a victim asks the school not to tell anyone about the sexual violence or sexual harassment:
 - There's no definitive answer, because even if a victim doesn't consent to sharing information, staff may still lawfully share it if there's another legal basis under the UK GDPR that applies
 - The DSL will have to balance the victim's wishes against their duty to protect the victim and other children
 - The DSL should consider that:
 - Parents or carers should normally be informed (unless this would put the victim at greater risk)
 - The basic safeguarding principle is: if a child is at risk of harm, is in immediate danger, or has been harmed, a referral should be made to local authority children's social care
 - Rape, assault by penetration and sexual assault are crimes. Where a report of rape, assault by penetration or sexual assault is made, this should be referred to the police. While the age of criminal responsibility is 10, if the alleged perpetrator is under 10, the starting principle of referring to the police remains
- Regarding anonymity, all staff will:
 - Be aware of anonymity, witness support and the criminal process in general where an allegation of sexual violence or sexual harassment is progressing through the criminal justice system
 - Do all they reasonably can to protect the anonymity of any children involved in any report of sexual violence or sexual harassment – for example, carefully considering which staff should know about the report, and any support for children involved
 - Consider the potential impact of social media in facilitating the spreading of rumours and exposing victims' identities

- The government's [information sharing advice for safeguarding practitioners](#) includes 7 'golden rules' for sharing information, and will support staff who have to make decisions about sharing information
- If staff are in any doubt about sharing information, they should speak to the DSL in the first instance.
- Confidentiality is also addressed in this policy with respect to record-keeping in section 15, and allegations of abuse against staff in appendix 3

7. Recognising abuse and taking action

All staff are expected to be able to identify and recognise all forms of abuse, neglect and exploitation and shall be alert to the potential need for early help for a child who:

- Is disabled
- Has special educational needs (whether or not they have a statutory education health and care (EHC) plan)
- Is a young carer
- Is bereaved
- Is showing signs of being drawn into anti-social or criminal behaviour, including being affected by gangs and county lines and organised crime groups and/or serious violence, including knife crime
- Is frequently missing/goes missing from education, care or home
- Is at risk of modern slavery, trafficking, sexual and/or criminal exploitation
- Is at risk of being radicalised or exploited
- Is viewing problematic and/or inappropriate online content (for example, linked to violence), or developing inappropriate relationships online
- Is in a family circumstance presenting challenges for the child, such as drug and alcohol misuse, adult mental health issues and domestic abuse
- Is presenting as being easily influenced by conspiracy theories, misinformation or disinformation, particularly online
- Is misusing drugs or alcohol
- Is suffering from mental ill health
- Has returned home to their family from care
- Is at risk of so-called 'honour'-based abuse such as female genital mutilation (FGM) or forced marriage
- Is a privately fostered child
- Has a parent or carer in custody or is affected by parental offending
- Is missing education, or persistently absent from school, or not in receipt of full-time education
- Has experienced multiple suspensions and is at risk of, or has been permanently excluded

Staff, volunteers and governors must follow the procedures set out below in the event of a safeguarding issue.

Please note – in this and subsequent sections, you should take any references to the DSL to mean “the DSL (or deputy DSL)”.

7.1 If a child is suffering or likely to suffer harm, or in immediate danger

Make a referral to local authority children's social care and/or the police **immediately** if you believe a child is suffering or likely to suffer from harm, or is in immediate danger. **Anyone can make a referral.**

Tell the DSL (see section 5.2) as soon as possible if you make a referral directly.

The LA to which the referral must be made is dependent on the child's address. The two most common LAs for children in Altrincham College are Trafford and Manchester City Council. Both LAs will require parents to

have given permission for the information to be shared. Members of staff **MUST telephone** the local authority to get advice on this before contacting parents.

Referrals to Trafford First Response

Referrals into Trafford Children's First Response are made via the online referral form, and telephone consultations taking place when advice is required. Where possible the referral will be made by the DSL, however if the DSL is not available in person the senior leader who is co-ordinating safeguarding on site may be required to make the referral on behalf of the DSL

- Online Referral Form – www.trafford.gov.uk/firstresponse
- Telephone – 0161 912 5125
- Email – FirstResponse@trafford.gov.uk

Referrals to Manchester City Council

Referrals into Manchester Children's Services are made via the telephone or concerns can also be emailed.

Call: 0161 234 5001

email: mcsreply@manchester.gov.uk

7.2 If a child makes a disclosure to you

If a child discloses a safeguarding issue to you, you should:

- Listen to and believe them. Allow them time to talk freely and do not ask leading questions
- Stay calm and do not show that you are shocked or upset
- Tell the child they have done the right thing in telling you. Do not tell them they should have told you sooner
- Explain what will happen next and that you will have to pass this information on. Do not promise to keep it a secret
- Write up your conversation as soon as possible in the child's own words on CPOMS under the category of Child Protection. Stick to the **facts**, and do not put your own judgement on it
- If you do not have access to CPOMS, sign and date the write-up and pass it on to the DSL. Alternatively, if appropriate, make a referral to local authority children's social care and/or the police directly (see 7.1), and tell the DSL as soon as possible that you have done so. Aside from these people, do not disclose the information to anyone else unless told to do so by a relevant authority involved in the safeguarding process

Bear in mind that some children may:

- Not feel ready, or know how to tell someone that they are being abused, exploited or neglected
- Not recognise their experiences as harmful
- Feel embarrassed, humiliated or threatened. This could be due to their vulnerability, disability, sexual orientation and/or language barriers

None of this should stop you from having a 'professional curiosity' and speaking to the DSL if you have concerns about a child.

7.3 If you discover that FGM has taken place or a pupil is at risk of FGM

Keeping Children Safe in Education explains that FGM comprises "all procedures involving partial or total removal of the external female genitalia, or other injury to the female genital organs".

FGM is illegal in the UK and a form of child abuse with long-lasting, harmful consequences. It is also known as 'female genital cutting', 'circumcision' or 'initiation'.

Possible indicators that a pupil has already been subjected to FGM, and factors that suggest a pupil may be at risk, are set out in appendix 4 of this policy.

Any teacher who either:

- Is informed by a girl under 18 that an act of FGM has been carried out on her; or
- Observes physical signs which appear to show that an act of FGM has been carried out on a girl under 18 and they have no reason to believe that the act was necessary for the girl's physical or mental health or for purposes connected with labour or birth

Must immediately report this to the police, personally. This is a mandatory statutory duty, and teachers will face disciplinary sanctions for failing to meet it.

Unless they have been specifically told not to disclose, they should also discuss the case with the DSL and involve local authority children's social care as appropriate.

Any other member of staff who discovers that an act of FGM appears to have been carried out on a **pupil under 18** must speak to the DSL and follow our local safeguarding procedures.

The duty for teachers mentioned above does not apply in cases where a pupil is *at risk* of FGM or FGM is suspected but is not known to have been carried out. **Staff should not examine pupils.**

Any member of staff who suspects a pupil is *at risk* of FGM or suspects that FGM has been carried out or discovers that a pupil **aged 18 or over** appears to have been a victim of FGM should speak to the DSL and follow our local safeguarding procedures detailed in section 7.1 above.

7.4 If you have concerns about a child (as opposed to believing a child is suffering or likely to suffer from harm, or is in immediate danger)

Figure 1 below, before section 7.7, illustrates the procedure to follow if you have any concerns about a child's welfare.

Where possible, speak to the DSL first to agree a course of action.

If in exceptional circumstances the DSL is not available, this should not delay appropriate action being taken. Speak to a member of the senior leadership team and/or take advice from local authority children's social care. You can also seek advice at any time from the NSPCC helpline on 0808 800 5000. Share details of any actions you take with the DSL as soon as practically possible.

Make a referral to local authority children's social care directly, if appropriate (see 'Referral' below). Share any action taken with the DSL as soon as possible.

Early help assessment

If an early help assessment is appropriate, the DSL will generally lead on liaising with other agencies and setting up an inter-agency assessment as appropriate. Staff may be required to support other agencies and professionals in an early help assessment, in some cases acting as the lead practitioner.

We will discuss and agree, with statutory safeguarding partners, levels for the different types of assessment, as part of local arrangements.

The DSL will keep the case under constant review and the school will consider a referral to local authority children's social care if the situation does not seem to be improving. Timelines of interventions will be monitored and reviewed. Pastoral Managers have a close overview of all Early Help cases but should they be unavailable, liaise with the DSL to get the most up to date information and contact details for professionals working with the family, or ring Trafford First Response on 0161 912 5125.

Referral

If it is appropriate to refer the case to local authority children's social care or the police, the DSL will make the referral or support you to do so.

If you make a referral directly (see section 7.1), you must tell the DSL as soon as possible.

The local authority will make a decision within 1 working day of a referral about what course of action to take and will let the person who made the referral know the outcome. The DSL or person who made the referral

must follow up with the local authority if this information is not made available, and ensure outcomes are properly recorded.

If the child's situation does not seem to be improving after the referral, the DSL or person who made the referral must follow local escalation procedures to ensure their concerns have been addressed and that the child's situation improves.

In the first instance, a follow up call to Trafford First Response on 0161 912 5125 should be made to discuss the initial referral. Escalation of concerns can be made by contacting the manager of the social worker assigned to the case. Further escalation can be done by contacting the Integrated Customer Engagement team by sending an email to ice@trafford.gov.uk or telephoning on 0161 912 2000

7.5 If you have concerns about extremism

If a child is not suffering or likely to suffer from harm, or in immediate danger, where possible speak to the DSL first to agree a course of action.

If in exceptional circumstances the DSL is not available, this should not delay appropriate action being taken. Speak to a member of the senior leadership team and/or seek advice from local authority children's social care. Make a referral to local authority children's social care directly, if appropriate (see 'Referral' above). Inform the DSL or deputy as soon as practically possible after the referral.

Where there is a concern, the DSL will consider the level of risk and decide which agency to make a referral to. This could include the police or [Channel](#), the government's programme for identifying and supporting individuals at risk of becoming involved with or supporting terrorism, or the local authority children's social care team.

The DfE also has a dedicated telephone helpline on 020 7340 7264, which school staff and governors can call to raise concerns about extremism with respect to a pupil. You can also email counter.extremism@education.gov.uk. Note that this is not for use in emergency situations.

In an emergency, call 999 or the confidential anti-terrorist hotline on 0800 789 321 if you:

- Think someone is in immediate danger
- Think someone may be planning to travel to join an extremist group
- See or hear something that may be terrorist-related

7.6 If you have a concern about mental health

Mental health problems can, in some cases, be an indicator that a child has suffered or is at risk of suffering abuse, neglect or exploitation.

Staff will be alert to behavioural signs that suggest a child may be experiencing a mental health problem or be at risk of developing one.

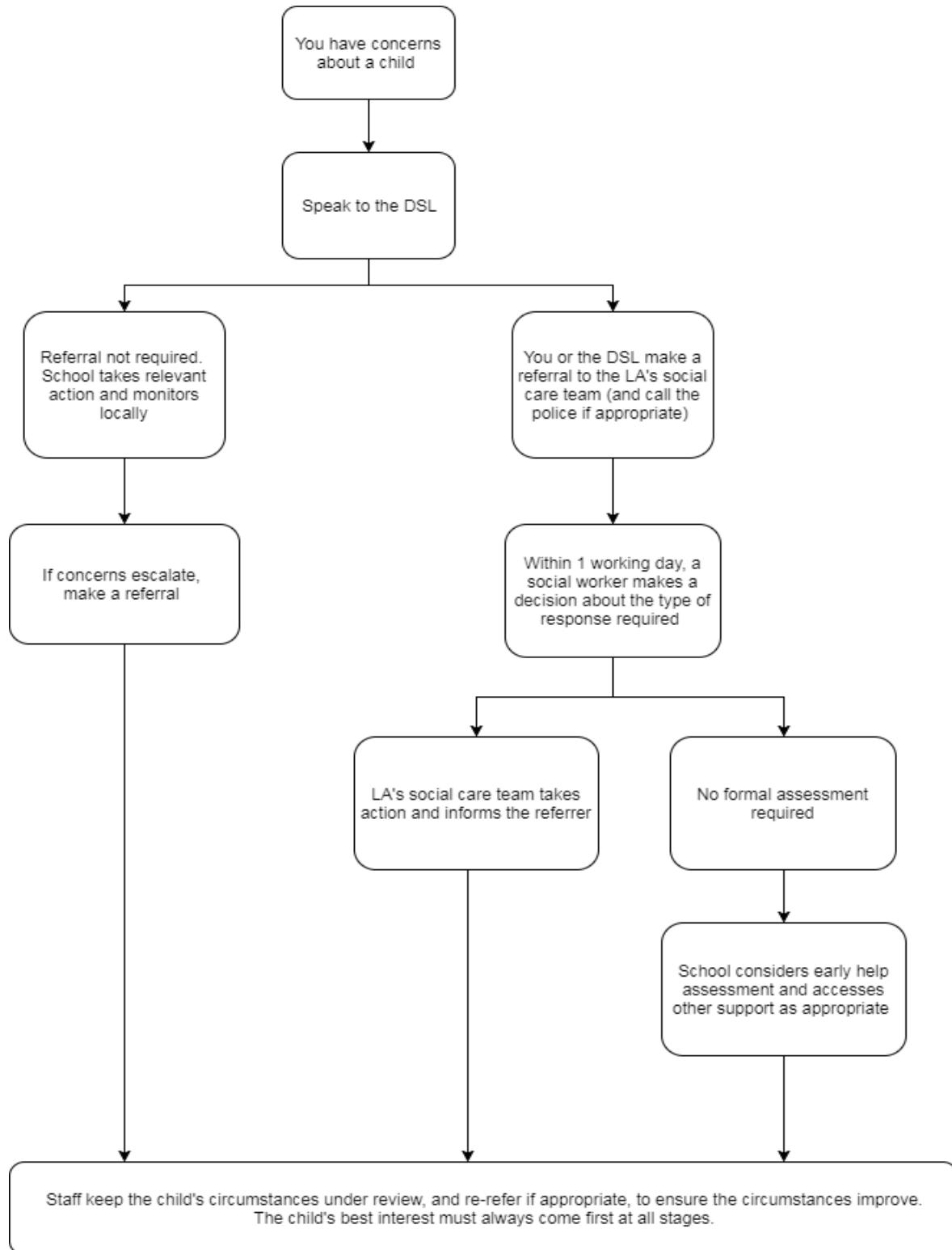
If you have a mental health concern about a child that is also a safeguarding concern, take immediate action by following the steps in section 7.4.

If you have a mental health concern that is **not** also a safeguarding concern, speak to the DSL to agree a course of action.

Further information can be found in the Wellbeing Provision Map in Appendix 6

Figure 1: procedure if you have concerns about a child’s welfare (as opposed to believing a child is suffering or likely to suffer from harm, or in immediate danger)

(Note – if the DSL is unavailable, this should not delay action. See section 7.4 for what to do.)



7.7 Concerns about a staff member, supply teacher, volunteer or contractor

If you have concerns about a member of staff (including a supply teacher, volunteer or contractor), or an allegation is made about a member of staff (including a supply teacher, volunteer or contractor) posing a risk

of harm to children, speak to the Headteacher or Head of School as soon as possible. If the concerns/allegations are about the Headteacher or Head of School, speak to the Chair of Governors.

The Headteacher or Head of School/Chair of Governors will then follow the procedures set out in Appendix 3, if appropriate.

Where you believe there is a conflict of interest in reporting a concern or allegation about a member of staff (including a supply teacher, volunteer or contractor) to the Headteacher or Head of School, report it directly to the Local Authority Designated Officer (LADO).

If you receive an allegation relating to an incident where an individual or organisation was using the school premises for running an activity for children, follow our school safeguarding policies and procedures, informing the LADO, as you would with any safeguarding allegation.

7.8 Allegations of abuse made against other pupils

We recognise that children are capable of abusing their peers. Abuse will never be tolerated or passed off as “banter”, “just having a laugh” or “part of growing up”, as this can lead to a culture of unacceptable behaviours and an unsafe environment for pupils.

We also recognise the gendered nature of child-on-child abuse. However, all child-on-child abuse is unacceptable and will be taken seriously.

Most cases of pupils hurting other pupils will be dealt with under our school’s behaviour policy, but this child protection and safeguarding policy will apply to any allegations that raise safeguarding concerns. This might include where the alleged behaviour:

- Is serious, and potentially a criminal offence
- Could put pupils in the school at risk
- Is violent
- Involves pupils being forced to use drugs or alcohol
- Involves sexual exploitation, sexual abuse or sexual harassment, such as indecent exposure, sexual assault, upskirting or sexually inappropriate pictures or videos (including the sharing of nudes and semi-nudes)

See Appendix 4 for more information about child-on-child abuse.

Procedures for dealing with safeguarding allegations of child-on-child abuse

If a pupil makes an allegation of abuse against another pupil:

- You must record the allegation on CPOMS and tell the DSL, but do not investigate it
- The DSL will contact the local authority children’s social care team and follow its advice, as well as the police if the allegation involves a potential criminal offence
- The DSL will put a risk assessment and support plan into place for all children involved (including the victim(s), the child(ren) against whom the allegation has been made and any others affected) with a named person they can talk to if needed. This will include considering school transport as a potentially vulnerable place for a victim or alleged perpetrator(s)
- The DSL will contact the Children and Adolescent Mental Health Services (CAMHS), if appropriate

If the incident is a criminal offence and there are delays in the criminal process, the DSL will work closely with the police (and other agencies as required) while protecting children and/or taking any disciplinary measures against the alleged perpetrator. We will ask the police if we have any questions about the investigation.

Creating a supportive environment in school and minimising the risk of child-on-child abuse

We recognise the importance of taking proactive action to minimise the risk of child-on-child abuse, and of creating a supportive environment where victims feel confident in reporting incidents.

To achieve this, we will:

- Challenge any form of derogatory or sexualised language or inappropriate behaviour between peers, including requesting or sending sexual images
- Be vigilant to issues that particularly affect different genders – for example, sexualised or aggressive touching or grabbing towards female pupils, and initiation or hazing type violence with respect to boys
- Ensure our curriculum helps to educate pupils about appropriate behaviour and consent
- Ensure pupils are able to easily and confidently report abuse using our reporting systems (as described in section 7.10 below)
- Ensure staff reassure victims that they are being taken seriously
- Be alert to reports of sexual violence and/or harassment that may point to environmental or systemic problems that could be addressed by updating policies, processes and the curriculum, or could reflect wider issues in the local area that should be shared with safeguarding partners
- Support children who have witnessed sexual violence, especially rape or assault by penetration. We will do all we can to make sure the victim, alleged perpetrator(s) and any witnesses are not bullied or harassed
- Consider intra-familial harms and any necessary support for siblings following a report of sexual violence and/or harassment
- Ensure staff are trained to understand:
 - How to recognise the indicators and signs of child-on-child abuse, and know how to identify it and respond to reports
 - That even if there are no reports of child-on-child abuse in school, it does not mean it is not happening – staff should maintain an attitude of “it could happen here”
 - That if they have any concerns about a child’s welfare, they should act on them immediately rather than wait to be told, and that victims may not always make a direct report. For example:
 - Children can show signs or act in ways they hope adults will notice and react to
 - A friend may make a report
 - A member of staff may overhear a conversation
 - A child’s behaviour might indicate that something is wrong
 - That certain children may face additional barriers to telling someone because of their vulnerability, disability, gender, ethnicity and/or sexual orientation
 - That a pupil harming a peer could be a sign that the child is being abused themselves, and that this would fall under the scope of this policy
 - The important role they have to play in preventing child-on-child abuse and responding where they believe a child may be at risk from it
 - That they should speak to the DSL if they have any concerns
 - That social media is likely to play a role in the fall-out from any incident or alleged incident, including for potential contact between the victim, alleged perpetrator(s) and friends from either side

The SLT will take the lead role in any disciplining of the alleged perpetrator(s). We will provide support at the same time as taking any disciplinary action.

Disciplinary action can be taken while other investigations are going on, e.g. by the police. The fact that another body is investigating or has investigated an incident doesn’t (in itself) prevent our school from coming to its own conclusion about what happened and imposing a penalty accordingly. We will consider these matters on a case-by-case basis, taking into account whether:

- Taking action would prejudice an investigation and/or subsequent prosecution – we will liaise with the police and/or local authority children’s social care to determine this
- There are circumstances that make it unreasonable or irrational for us to reach our own view about what happened while an independent investigation is ongoing

7.9 Sharing of nudes and semi-nudes (‘sexting’)

Your responsibilities when responding to an incident

If you are made aware of an incident involving the consensual or non-consensual sharing of nude or semi-nude images/videos, including pseudo-images, which are computer-generated images that otherwise appear to be a photograph or video (also known as ‘sexting’ or ‘youth produced sexual imagery’), you must report it to the DSL immediately.

You must **not**:

- View, copy, print, share, store or save the imagery yourself, or ask a pupil to share or download it (if you have already viewed the imagery by accident, you must report this to the DSL)
- Delete the imagery or ask the pupil to delete it
- Ask the pupil(s) who are involved in the incident to disclose information regarding the imagery (this is the DSL’s responsibility)
- Share information about the incident with other members of staff, the pupil(s) it involves or their, or other, parents and/or carers
- Say or do anything to blame or shame any young people involved

You should explain that you need to report the incident and reassure the pupil(s) that they will receive support and help from the DSL.

Initial review meeting

Following a report of an incident, the DSL will hold an initial review meeting with appropriate school staff – this may include the staff member who reported the incident, pastoral staff or Leadership Team members. This meeting will consider the initial evidence and aim to determine:

- Whether there is an immediate risk to pupil(s)
- If a referral needs to be made to the police and/or children’s social care
- What further information is required to decide on the best response
- Whether the image(s) has been shared widely and via what services and/or platforms (this may be unknown)
- Whether immediate action should be taken to delete or remove images or videos from devices or online services
- Any relevant facts about the pupils involved which would influence risk assessment
- If there is a need to contact another school, college, setting or individual
- Whether to contact parents or carers of the pupils involved (in most cases parents/carers should be involved)

The DSL will make an immediate referral to police and/or children’s social care if:

- The incident involves an adult. Where an adult poses as a child to groom or exploit a child or young person, the incident may first present as a child-on-child incident. See Appendix 4 for more information on assessing adult-involved incidents
- There is reason to believe that a young person has been coerced, blackmailed or groomed, or if there are concerns about their capacity to consent (for example, owing to SEN)
- What the DSL knows about the images or videos suggests the content depicts sexual acts which are unusual for the young person’s developmental stage, are violent or contain otherwise illegal content

- The imagery involves sexual acts and any pupil in the images or videos is under 13
- The DSL has reason to believe a pupil is at immediate risk of harm owing to the sharing of nudes and semi-nudes (for example, the young person is presenting as suicidal or self-harming)

If none of the above apply then the DSL, in consultation with the Headteacher or Head of School or Trust Director of Safeguarding and other members of staff as appropriate, may decide to respond to the incident without involving the police or children's social care. The decision will be made and recorded in line with the procedures set out in this policy.

Further review by the DSL

If at the initial review stage a decision has been made not to refer to police and/or children's social care, the DSL will conduct a further review to establish the facts and assess the risks.

They will hold interviews with the pupils involved (if appropriate).

If at any point in the process there is a concern that a pupil has been harmed or is at risk of harm, a referral will be made to children's social care and/or the police immediately.

Informing parents/carers

The DSL will inform parents/carers at an early stage and keep them involved in the process, unless there is a good reason to believe that involving them would put the pupil at risk of harm.

Referring to the police

If it is necessary to refer an incident to the police, this will be done through dialling 101.

Recording incidents

All incidents of sharing of nudes and semi-nudes, and the decisions made in responding to them, will be recorded. The record-keeping arrangements set out in section 14 of this policy also apply to recording these incidents.

Curriculum coverage

Pupils are taught about the issues surrounding the sharing of nudes and semi-nudes as part of our RSHE curriculum, assemblies, form time and computing programmes. Teaching covers the following in relation to the sharing of nudes and semi-nudes:

- What it is
- How it is most likely to be encountered
- The consequences of requesting, forwarding or providing such images, including when it is and is not abusive and when it may be deemed as online sexual harassment
- Issues of legality
- The risk of damage to people's feelings and reputation

Pupils also learn the strategies and skills needed to manage:

- Specific requests or pressure to provide (or forward) such images
- The receipt of such images

This policy on the sharing of nudes and semi-nudes is also shared with pupils so they are aware of the processes the school will follow in the event of an incident.

Teaching follows best practice in delivering safe and effective education, including:

- Putting safeguarding first
- Approaching from the perspective of the child
- Promoting dialogue and understanding
- Empowering and enabling children and young people
- Never frightening or scare-mongering

- Challenging victim-blaming attitudes

7.10 Reporting systems for our pupils

Where there is a safeguarding concern, we will take the child's wishes and feelings into account when determining what action to take and what services to provide.

We recognise the importance of ensuring pupils feel safe and comfortable to come forward and report any concerns and/or allegations.

To achieve this, we will:

- Put systems in place for pupils to confidently report abuse
- Ensure our reporting systems are well promoted, easily understood and easily accessible for pupils
- Make it clear to pupils that their concerns will be taken seriously, and that they can safely express their views and give feedback

Students have access to Whisper which is confidential reporting system in school. All form rooms should display the Whisper poster which has details of how students can report. Students will be reminded at regular intervals during form time and assemblies. Parents will also be reminded by regular mentions in the Headteacher or Head of School and Safeguarding bulletins. Students are also reminded during RSHE lessons about the reporting systems in school eg. Whisper, and national reporting systems such as Childline. The display of support information is widely distributed around school.

8. Online safety and the use of mobile technology

We recognise the importance of safeguarding children from potentially harmful and inappropriate online material, and we understand that technology is a significant component in many safeguarding and wellbeing issues.

To address this, our school aims to:

- Have robust processes (including filtering and monitoring systems) in pLace to ensure the online safety of pupils, staff, volunteers and governors
- Protect and educate the whole school community in its safe and responsible use of technology, including mobile and smart technology (which we refer to as 'mobile phones')
- Set clear guidelines for the use of mobile phones for the whole school community
- Establish clear mechanisms to identify, intervene in and escalate any incidents or concerns, where appropriate

The 4 key categories of risk

Our approach to online safety is based on addressing the following categories of risk:

- **Content** – being exposed to illegal, inappropriate or harmful content, such as pornography, fake news, conspiracy theory, disinformation, misinformation, racism, misogyny, violence towards women and girls, self-harm, suicide, antisemitism, radicalisation and extremism
- **Contact** – being subjected to harmful online interaction with other users, such as peer-to-peer pressure, commercial advertising and adults posing as children or young adults with the intention to groom or exploit them for sexual, criminal, financial or other purposes
- **Conduct** – personal online behaviour that increases the likelihood of, or causes, harm, such as making, sending and receiving explicit images (e.g. consensual and non-consensual sharing of nudes and semi-nudes and/or pornography), sharing other explicit images and online bullying; and
- **Commerce** – risks such as online gambling, inappropriate advertising, phishing and/or financial scams

To meet our aims and address the risks above, we will:

- Educate pupils about online safety as part of our curriculum. For example:

- The safe use of social media, the internet and technology
 - Keeping personal information private
 - How to recognise unacceptable behaviour online
 - How to report any incidents of cyber-bullying, ensuring pupils are encouraged to do so, including where they're a witness rather than a victim
- Train staff, as part of their induction, on safe internet use and online safeguarding issues including cyber-bullying, the risks of online radicalisation, and the expectations, roles and responsibilities around filtering and monitoring. All staff members will receive refresher training as required and at least once each academic year
 - Educate parents/carers about online safety via our website, communications sent directly to them and during parents' evenings. We will also share clear procedures with them so they know how to raise concerns about online safety
 - Make sure staff are aware of any restrictions placed on them with regards to the use of their mobile phone and cameras, for example that:
 - Staff are allowed to bring their personal phones to school for their own use, but will limit such use to non-contact time when pupils are not present
 - Staff will not take pictures or recordings of pupils on their personal phones or cameras unless approved in advance by the Headteacher. Images should be deleted from personal devices following their immediate use in school.
 - Make all pupils, parents/carers, staff, volunteers and governors aware that they are expected to sign an agreement regarding the acceptable use of the internet in school, use of the school's ICT systems and use of their mobile and smart technology
 - Explain the sanctions we will use if a pupil is in breach of our policies on the acceptable use of the internet and mobile phones
 - Make sure all staff, pupils and parents/carers are aware that staff have the power to search pupils' phones, as set out in the [DfE's guidance on searching, screening and confiscation](#)
 - Put in place robust filtering and monitoring systems to limit children's exposure to the 4 key categories of risk (described above) from the school's IT systems.
 - Carry out an annual review of our approach to online safety, supported by an annual risk assessment that considers and reflects the risks faced by our school community
 - Provide regular safeguarding and children protection updates including online safety to all staff, at least annually, in order to continue to provide them with the relevant skills and knowledge to safeguard effectively
 - Review the child protection and safeguarding policy, including online safety, annually and ensure the procedures and implementation are updated and reviewed regularly

This section summarises our approach to online safety and mobile phone use. For full details about our school's policies in these areas, please refer to our online safety policy and mobile phone policies which can be found on our website.

8.1 Artificial intelligence (AI)

Generative artificial intelligence (AI) tools are now widespread and easy to access. Staff, pupils and parents/carers may be familiar with generative chatbots such as ChatGPT and Google Bard.

Altrincham College recognises that AI has many uses, including enhancing teaching and learning, and in helping to protect and safeguard pupils. However, AI may also have the potential to facilitate abuse (e.g. bullying and grooming) and/or expose pupils to harmful content. For example, in the form of 'deepfakes', where AI is used to create images, audio or video hoaxes that look real.

Altrincham College will treat any use of AI to access harmful content or bully pupils in line with this policy and our Behaviour Policy.

Staff should be aware of the risks of using AI tools whilst they are still being developed and follow Trust procedures and DFE advice and guidance for any new AI tool being used by the school.

<https://www.gov.uk/government/publications/generative-artificial-intelligence-in-education/generative-artificial-intelligence-ai-in-education>

9. Notifying parents or carers

Where appropriate, we will discuss any concerns about a child with the child's parents or carers. The DSL will normally do this in the event of a suspicion or disclosure.

Other staff will only talk to parents or carers about any such concerns following consultation with the DSL.

If we believe that notifying the parents or carers would increase the risk to the child, we will discuss this with the local authority children's social care team before doing so.

In the case of allegations of abuse made against other children, we will normally notify the parents or carers of all the children involved. We will think carefully about what information we provide about the other child involved, and when. We will work with the police and/or local authority children's social care to make sure our approach to information sharing is consistent.

The DSL will, along with any relevant agencies (this will be decided on a case-by-case basis):

- Meet with the victim's parents or carers, with the victim, to discuss what's being put in place to safeguard them, and understand their wishes in terms of what support they may need and how the report will be progressed
- Meet with the alleged perpetrator's parents or carers to discuss support for them, and what's being put in place that will impact them, e.g. moving them out of classes with the victim, and the reason(s) behind any decision(s)

10. Pupils with special educational needs, disabilities or health issues

We recognise that pupils with SEND or certain health conditions can face additional safeguarding challenges. Children with disabilities are more likely to be abused than their peers. Additional barriers can exist when recognising abuse, exploitation and neglect in this group, including:

- Assumptions that indicators of possible abuse such as behaviour, mood and injury relate to the child's condition without further exploration
- Pupils being more prone to peer group isolation or bullying (including prejudice-based bullying) than other pupils
- The potential for pupils with SEN, disabilities or certain health conditions being disproportionately impacted by behaviours such as bullying, without outwardly showing any signs
- Communication barriers and difficulties in managing or reporting these challenges
- Cognitive understanding – being unable to understand the difference between fact and fiction in online content and then repeating the content/behaviours in schools or colleges or the consequences of doing so

We offer extra pastoral support for these pupils. This includes:

- The provision of nurture space at form time
- Bespoke support at break and lunchtime

Any abuse involving pupils with SEND will require close liaison with the DSL (or deputy) and the SENCO.

11. Pupils with a social worker

Pupils may need a social worker due to safeguarding or welfare needs. We recognise that a child's experiences of adversity and trauma can leave them vulnerable to further harm as well as potentially creating barriers to attendance, learning, behaviour and mental health.

The DSL and all members of staff will work with and support social workers to help protect vulnerable children.

Where we are aware that a pupil has a social worker, the DSL will always consider this fact to ensure any decisions are made in the best interests of the pupil's safety, welfare and educational outcomes. For example, it will inform decisions about:

- Responding to unauthorised absence or missing education where there are known safeguarding risks
- The provision of pastoral and/or academic support

12. Children in Care and Children Previously in Care

NB; The term "Children in Care (CiC) replaces the "Looked After Children" and "Children Previously in Care" CPiC) replaces Previously Looked After Children in accordance with the guidance from the NSPCC. We will ensure that staff have the skills, knowledge and understanding to keep looked-after children and previously looked-after children safe. In particular we will ensure that:

- Appropriate staff have relevant information about children's looked after legal status, contact arrangements with birth parents or those with parental responsibility, and care arrangements
- The DSL has details of children's social workers and relevant virtual school heads

We have appointed a designated teacher, Jacqui Hudson-Kirkham, who is responsible for promoting the educational achievement of Children in Care and Children Previously in Care in line with [statutory guidance](#).

The designated teacher is appropriately trained and has the relevant qualifications and experience to perform the role.

As part of their role, the designated teacher will:

- Work closely with the DSL to ensure that any safeguarding concerns regarding Children in Care and Children Previously in Care are quickly and effectively responded to
- Work with virtual school heads to promote the educational achievement of Children in Care and Children Previously in Care, including discussing how pupil premium plus funding can be best used to support looked-after children and meet the needs identified in their personal education plans

13. Pupils who are lesbian, gay, bisexual or gender questioning

NB; Further guidance is expected from the DfE in September 2025. When this is published, the content in this section may be subject to change

We recognise that pupils who are (or who are perceived to be) lesbian, gay, bisexual or gender questioning (LGBTQ+) can be targeted by other children. See our behaviour policy for more detail on how we prevent bullying based on gender or sexuality.

We also recognise that LGBTQ+ children are more likely to experience poor mental health. Any concerns should be reported to the DSL.

When families/carers are making decisions about support for gender questioning pupils, they should be encouraged to seek clinical help and advice. This should be done as early as possible when supporting pre-pubertal children.

When supporting a gender questioning pupil, we will take a cautious approach as there are still unknowns around the impact of social transition, and a pupil may have wider vulnerability, such as complex mental health and psychosocial needs, and in some cases, autism spectrum disorder (ASD) and/or attention deficit hyperactivity disorder (ADHD).

We will also consider the broad range of their individual needs, in partnership with their parents/carers (other than in rare circumstances where involving parents/carers would constitute a significant risk of harm to the pupil). We will also include any clinical advice that is available and consider how to address wider vulnerabilities such as the risk of bullying.

Risks can be compounded where children lack trusted adults with whom they can be open. We therefore aim to reduce the additional barriers faced and create a culture where pupils can speak out or share their concerns with members of staff.

14. Complaints and concerns about school safeguarding policies

14.1 Complaints against staff

Complaints against staff that are likely to require a child protection investigation will be handled in accordance with our procedures for dealing with allegations of abuse made against staff (see appendix 3).

14.2 Whistle-blowing

The Achieve and Learn Trust whistle-blowing policy covers concerns the reporting of concerns regarding the way the school safeguards pupils – including poor or unsafe practice, or potential failures. A copy can be found on the school website. Whistle-blowing reports are treated in the strictest confidence.

15. Record-keeping

We will hold records in line with our records retention schedule.

All safeguarding concerns, discussions, decisions made and the rationale for those decisions, must be recorded on CPOMS. This should include instances where referrals were or were not made to another agency such as local authority children's social care or the Prevent programme, etc. If you are in any doubt about whether to record something, discuss it with the DSL.

Records will include:

- A clear and comprehensive summary of the concern
- Details of how the concern was followed up and resolved
- A note of any action taken, decisions reached and the outcome

Concerns and referrals will be logged under the confidential category "child protection" on CPOMS for each child.

Any non-confidential records will be readily accessible and available. Confidential information and records will be held securely and only available to those who have a right or professional need to see them.

Safeguarding records relating to individual children will be retained for a reasonable period of time after they have left the school.

If a child for whom the school has, or has had, safeguarding concerns moves to another school, the DSL will ensure that their child protection file is forwarded as soon as possible, securely, and separately from the main pupil file.

To allow the new school/college to have support in place when the child arrives, this should be within:

- **5 days** for an in-year transfer, or within
- **The first 5 days** of the start of a new term

In addition, if the concerns are significant or complex, and/or social services are involved, the DSL will speak to the DSL of the receiving school and provide information to enable them to have time to make any necessary preparations to ensure the safety of the child.

CPOMS records should be transferred electronically wherever possible, if the receiving school also uses the same system. For schools who do not use CPOMS, a password protected electronic copy of the record will be sent by email to the DSL in the receiving school. A read receipt should be requested.

In addition:

- Appendix 2 sets out our policy on record-keeping specifically with respect to recruitment and pre-appointment checks
- Appendix 3 sets out our policy on record-keeping with respect to allegations of abuse made against staff

16. Training

16.1 All staff

All staff members will undertake safeguarding and child protection training at induction, including on whistle-blowing procedures and online safety, to ensure they understand the school's safeguarding systems and their responsibilities, and can identify signs of possible abuse, exploitation or neglect.

This training will be regularly updated and will:

- Be integrated, aligned and considered as part of the whole-school safeguarding approach and wider staff training, and curriculum planning
- Be in line with advice from the 3 safeguarding partners
- Include online safety, including an understanding of the expectations, roles and responsibilities for staff around filtering and monitoring
- Have regard to the Teachers' Standards to support the expectation that all teachers:
 - Manage behaviour effectively to ensure a good and safe environment
 - Have a clear understanding of the needs of all pupils

All staff will have training on the government's anti-radicalisation strategy, Prevent, to enable them to identify children at risk of becoming involved with or supporting terrorism, and to challenge extremist ideas.

Staff will also receive regular safeguarding and child protection updates, including on online safety, as required but at least annually (for example, through emails, e-bulletins and staff meetings).

Contractors who are provided through a private finance initiative (PFI) or similar contract will also receive safeguarding training.

Volunteers will receive appropriate training, if applicable.

16.2 The DSL

The DSL will undertake child protection and safeguarding training at least every 2 years.

In addition, they will update their knowledge and skills at regular intervals and at least annually (for example, through e-bulletins, meeting other DSLs, or taking time to read and digest safeguarding developments).

They, or any other designated Prevent lead, will also undertake more in-depth Prevent awareness training, including on extremist and terrorist ideologies.

16.3 Governors

All governors receive training about safeguarding and child protection (including online safety) at induction, which is regularly updated. This is to make sure that they:

- Have the knowledge and information needed to perform their functions and understand their responsibilities, such as providing strategic challenge
- Can be assured that safeguarding policies and procedures are effective and support the school to deliver a robust whole-school approach to safeguarding

As the Chair of Governors may be required to act as the 'case manager' in the event that an allegation of abuse is made against the Headteacher or Head of School, they receive training in managing allegations for this purpose.

All governors will read KCSIE at the start of each academic year in its entirety.

16.4 Recruitment – interview panels

At least 1 person conducting any interview for any post at the school will have undertaken safer recruitment training. This will cover, as a minimum, the contents of Keeping Children Safe in Education, and will be in line with local safeguarding procedures.

See appendix 2 of this policy for more information about our safer recruitment procedures.

16.5 Staff who have contact with pupils and families

All staff who have contact with children and families will have access to supervision from a line manager which will provide them with support, coaching and training, promote the interests of children and allow for confidential discussions of sensitive issues.

17. Monitoring arrangements

This policy will be reviewed **annually** by the DSL. At every review, it will be approved by the full governing board. The Safeguarding Policy will always reflect any changes to statutory guidance from the DfE which is issued throughout the year, and stakeholders will be notified as appropriate. The most up-to-date version of the Safeguarding Policy will always be found on the school website.

18. Serious Incidents – Post Incident Reviews

Any serious incident involving a student will have a far-reaching impact, even beyond those who have been directly involved. This may extend to other students, members of staff, friends and relatives and those working in partner organisations. In addition, serious incidents have the potential to affect reputation and with that, confidence, in the school, academy or Trust.

Purpose of the procedure

This procedure is for use whenever a serious incident has occurred and is intended to support learning to minimise the chance of a recurrence or a similar incident involving another student. The procedure is aimed at:

- analysing what happened, to whom, when and where
- identifying any learnings or reflections that can be drawn from what has happened
- developing a clear action plan for improvements, including how any learning will be implemented

Underlying review principles

The review process should not be used to identify fault or blame. Every effort should be made to support those involved and encourage a culture of honest reflection, identification of relevant learning points and of positive and tangible actions that directly reduce the risk of a recurrence.

Each review should therefore:

- be conducted with due candour
- Ideally, involve the family of the student
- be completed as soon after the incident as practical
- be objective and focused on identifying positive actions
- be focused on addressing specific questions raised by those impacted by the incident

- be proportionate in its scale

What is a serious incident?

Serious incidents are when individuals have or have nearly come to serious or lasting harm or where they have or have nearly caused harm to others. It is impossible to provide a definitive list of events that might be reviewed under this process however they may include:

- the death of a student or group of students through any apparent unnatural means
- a serious incident of self-harm, where there appears to have been clear intent to attempt suicide
- other incidents of serious harm being caused to a student or groups of students through unnatural means
- serious harm caused to others by a student at the school or academy
- a serious safeguarding issue eg, the safety of staff or students is threatened

Review process

Each review will be led ('Lead Reviewer') by a senior member of staff from the Trust or a senior member of staff approved by the CEO.

Stage 1: Initial incident

The priority must be responding to the specific incident and supporting those involved either directly or indirectly. However, the Lead Reviewer should be confirmed as soon as possible after the incident has occurred, so that they can be appraised of what appears to have happened and start the process of collecting relevant information.

Stage 2: Information gathering

Once the initial incident has been resolved or the situation is stable, a wider process of information gathering should begin. This stage should normally be completed within two weeks of the incident or as soon as possible thereafter. In cases such as the sudden death of a student, external agencies will require some of this information within a matter of days. Information may be gathered from a range of different sources including, but not limited to:

- staff who dealt with the initial incident
- staff who may have been providing support to the student either recently or in the past
- academic and PS colleagues in the relevant school
- fellow students
- immediate family and other relatives
- staff in partner organisations (e.g. NHS services)

In addition, the Lead Reviewer will seek initial reflective feedback from relevant individuals.

Stage 3: Incident overview

Having collated information, the Lead Reviewer will produce a chronology of events, which summarises relevant context and interactions between the student and others prior to, during and after the incident. In the case of the death of a student by suspected suicide, this should be long form document that sets out in detail all aspects of the student's time at the school or academy. To produce these summaries, it may be necessary to seek information from additional people by email or interview. In the spirit of the principles underlying this procedure, any interview will be informal in nature. The Lead Reviewer will also collate reflections submitted by those asked to input into the case on any learnings that can be drawn.

Stage 4: Reflection of whole incident and identification of learning and action points

On completion of the chronology the Lead Reviewer will convene a small review group (normally of up to five people) who will review all relevant documentation and will meet to:

- 1 Consider whether there remain any outstanding questions or gaps in knowledge relating to the incident that should be filled through a further process of clarification or investigation.
- 2 Having filled any knowledge gaps, to confirm that the chronology adequately addresses, what happened, to whom, when and where.
- 3 Identify, through review of the reflections gathered from others and through their own experience, learnings that can be drawn from the incident.
- 4 What actions should be taken to put in place improvements for the future, which are aimed at minimizing the chance of a recurrence or a similar incident involving another student.
- 5 Ensure that the resulting action has clear owners and time scales for delivery attached to each action.

It is the responsibility of the Lead Reviewer to determine the membership of the review group based on the nature of the incident. It will usually be comprised of school or academy staff, but consideration should be given where relevant to how to receive input from others (eg other students, friends and relatives and staff in other organisations).

Stage 5

The Lead Reviewer will be responsible for completing a Post Incident Analysis: final report, which should be shared with the Headteacher and CEO, and for ensuring that a summary of outcomes is also reported through the Academy Trust governance.

Wider opportunities for enhancement

Each review is not a standalone process, and the outcomes should always inform further refinement of prevention and intervention strategies. In addition, data and review outcomes should also be compared and examined to build a wider profile of vulnerability and enhancement opportunities.

Post Incident Analysis final report: structure

- student name / student ID number
- date of review
- name of lead incident reviewer
- summary of chronology of events
- outcome of the incident (including details of any injuries)
- remaining knowledge gaps

- identify areas of good practice and positive support provided to the student by specific staff or other individuals
- identify lessons learned from review of this incident
- agreed actions to reduce the risk of a recurrence or of a similar incident (must have clear owner and delivery date)
- any additional communication required (eg with other teams within Trust who may be required to take action as a result of this incident).

19. Links with other policies

This policy links to the following policies and procedures:

- Behaviour
- Staff Code of Conduct
- Complaints
- Health and safety
- Attendance
- Online safety
- Mobile phone use
- Equality
- Relationships and sex education
- First aid
- Curriculum
- Privacy notices
- Whistle-blowing
- ICT and Social Networking

These appendices are based on the Department for Education's statutory guidance, Keeping Children Safe in Education.

Appendix 1: types of abuse

Abuse, including neglect, and safeguarding issues are rarely standalone events that can be covered by 1 definition or label. In most cases, multiple issues will overlap.

Physical abuse may involve hitting, shaking, throwing, poisoning, burning or scalding, drowning, suffocating or otherwise causing physical harm to a child. Physical harm may also be caused when a parent or carer fabricates the symptoms of, or deliberately induces, illness in a child.

Emotional abuse is the persistent emotional maltreatment of a child such as to cause severe and adverse effects on the child's emotional development. Some level of emotional abuse is involved in all types of maltreatment of a child, although it may occur alone.

Emotional abuse may involve:

- Conveying to a child that they are worthless or unloved, inadequate, or valued only insofar as they meet the needs of another person
- Not giving the child opportunities to express their views, deliberately silencing them or 'making fun' of what they say or how they communicate
- Age or developmentally inappropriate expectations being imposed on children. These may include interactions that are beyond a child's developmental capability, as well as overprotection and limitation of exploration and learning, or preventing the child participating in normal social interaction
- Seeing or hearing the ill-treatment of another
- Serious bullying (including cyber-bullying), causing children frequently to feel frightened or in danger, or the exploitation or corruption of children

Sexual abuse involves forcing or enticing a child or young person to take part in sexual activities, not necessarily involving a high level of violence, whether or not the child is aware of what is happening. The activities may involve:

- Physical contact, including assault by penetration (for example, rape or oral sex) or non-penetrative acts such as masturbation, kissing, rubbing and touching outside of clothing
- Non-contact activities, such as involving children in looking at, or in the production of, sexual images, watching sexual activities, encouraging children to behave in sexually inappropriate ways, or grooming a child in preparation for abuse (including via the internet)

Sexual abuse is not solely perpetrated by adult males. Women can also commit acts of sexual abuse, as can other children.

Neglect is the persistent failure to meet a child's basic physical and/or psychological needs, likely to result in the serious impairment of the child's health or development. Neglect may occur during pregnancy as a result of maternal substance abuse.

Once a child is born, neglect may involve a parent or carer failing to:

- Provide adequate food, clothing and shelter (including exclusion from home or abandonment)
- Protect a child from physical and emotional harm or danger
- Ensure adequate supervision (including the use of inadequate care-givers)
- Ensure access to appropriate medical care or treatment

It may also include neglect of, or unresponsiveness to, a child's basic emotional needs.

Appendix 2: safer recruitment and DBS checks – policy and procedures

Recruitment and selection process

To make sure we recruit suitable people, we will ensure that those involved in the recruitment and employment of staff to work with children have received appropriate safer recruitment training.

We have put the following steps in place during our recruitment and selection process to ensure we are committed to safeguarding and promoting the welfare of children.

Advertising

When advertising roles, we will make clear:

- Our school's commitment to safeguarding and promoting the welfare of children
- That safeguarding checks will be undertaken
- The safeguarding requirements and responsibilities of the role, such as the extent to which the role will involve contact with children
- Whether or not the role is exempt from the Rehabilitation of Offenders Act 1974 and the amendments to the Exceptions Order 1975, 2013 and 2020. If the role is exempt, certain spent convictions and cautions are 'protected', so they do not need to be disclosed, and if they are disclosed, we cannot take them into account

Application forms

Our application forms will:

- Include a statement saying that it is an offence to apply for the role if an applicant is barred from engaging in regulated activity relevant to children (where the role involves this type of regulated activity)
- Include a copy of, or link to, our child protection and safeguarding policy and our policy on the employment of ex-offenders

Shortlisting

Our shortlisting process will involve at least 2 people and will:

- Consider any inconsistencies and look for gaps in employment and reasons given for them
- Explore all potential concerns

Once we have shortlisted candidates, we will ask shortlisted candidates to:

- Complete a self-declaration of their criminal record or any information that would make them unsuitable to work with children, so that they have the opportunity to share relevant information and discuss it at interview stage. The information we will ask for includes:
 - If they have a criminal history
 - Whether they are included on the barred list
 - Whether they are prohibited from teaching
 - Information about any criminal offences committed in any country in line with the law as applicable in England and Wales
 - Any relevant overseas information
- Sign a declaration confirming the information they have provided is true

We will also consider carrying out an online search on shortlisted candidates to help identify any incidents or issues that are publicly available online. Shortlisted candidates will be informed that we may carry out these checks as part of our due diligence process.

Seeking references and checking employment history

We will obtain references before interview. Any concerns raised will be explored further with referees and taken up with the candidate at interview.

When seeking references we will:

- Not accept open references
- Liaise directly with referees and verify any information contained within references with the referees
- Ensure any references are from the candidate's current employer and completed by a senior person. Where the referee is school based, we will ask for the reference to be confirmed by the Headteacher or Head of School/principal as accurate in respect to disciplinary investigations
- Obtain verification of the candidate's most recent relevant period of employment if they are not currently employed
- Secure a reference from the relevant employer from the last time the candidate worked with children if they are not currently working with children
- Compare the information on the application form with that in the reference and take up any inconsistencies with the candidate
- Resolve any concerns before any appointment is confirmed

Interview and selection

When interviewing candidates, we will:

- Probe any gaps in employment, or where the candidate has changed employment or location frequently, and ask candidates to explain this
- Explore any potential areas of concern to determine the candidate's suitability to work with children
- Record all information considered and decisions made

Pre-appointment vetting checks

We will record all information on the checks carried out in the school's single central record (SCR). Copies of these checks, where appropriate, will be held in individuals' personnel files. We follow requirements and best practice in retaining copies of these checks, as set out below.

New staff

All offers of appointment will be conditional until satisfactory completion of the necessary pre-employment checks. When appointing new staff, we will:

- Verify their identity
- Obtain (via the applicant) an enhanced DBS certificate, including barred list information for those who will be engaging in regulated activity (see definition below). We will obtain the certificate before, or as soon as practicable after, appointment, including when using the DBS update service. We will not keep a copy of the certificate for longer than 6 months, but when the copy is destroyed we may still keep a record of the fact that vetting took place, the result of the check and recruitment decision taken
- Obtain a separate barred list check if they will start work in regulated activity before the DBS certificate is available
- Verify their mental and physical fitness to carry out their work responsibilities
- Verify their right to work in the UK. We will keep a copy of this verification for the duration of the member of staff's employment and for 2 years afterwards
- Verify their professional qualifications, as appropriate
- Ensure they are not subject to a prohibition order if they are employed to be a teacher
- Carry out further additional checks, as appropriate, on candidates who have lived or worked outside of the UK. These could include, where available:

- For all staff, including teaching positions: [criminal records checks for overseas applicants](#)
- For teaching positions: obtaining a letter from the professional regulating authority in the country where the applicant has worked, confirming that they have not imposed any sanctions or restrictions on that person, and/or are aware of any reason why that person may be unsuitable to teach

• Check that candidates taking up a management position* are not subject to a prohibition from management (section 128) direction made by the secretary of state

* Management positions are most likely to include, but are not limited to, Headteacher or Head of Schools, principals and deputy/assistant Headteacher or Head of Schools.

Regulated activity means a person who will be:

- Responsible, on a regular basis in a school or college, for teaching, training, instructing, caring for or supervising children; or
- Carrying out paid, or unsupervised unpaid, work regularly in a school or college where that work provides an opportunity for contact with children; or
- Engaging in intimate or personal care or overnight activity, even if this happens only once and regardless of whether they are supervised or not

Existing staff

In certain circumstances we will carry out all the relevant checks on existing staff as if the individual was a new member of staff. These circumstances are when:

- There are concerns about an existing member of staff's suitability to work with children; or
- An individual moves from a post that is not regulated activity to one that is; or
- There has been a break in service of 12 weeks or more

We will refer to the DBS anyone who has harmed, or poses a risk of harm, to a child or vulnerable adult where:

- We believe the individual has engaged in [relevant conduct](#); or
- We believe the individual has received a caution or conviction for a relevant (automatic barring either with or without the right to make representations) offence, under the [Safeguarding Vulnerable Groups Act 2006 \(Prescribed Criteria and Miscellaneous Provisions\) Regulations 2009](#); or
- We believe the 'harm test' is satisfied in respect of the individual (i.e. they may harm a child or vulnerable adult or put them at risk of harm); and
- The individual has been removed from working in regulated activity (paid or unpaid) or would have been removed if they had not left

Agency and third-party staff

We will obtain written notification from any agency or third-party organisation that it has carried out the necessary safer recruitment checks that we would otherwise perform. We will also check that the person presenting themselves for work is the same person on whom the checks have been made.

Contractors

We will ensure that any contractor, or any employee of the contractor, who is to work at the school has had the appropriate level of DBS check (this includes contractors who are provided through a PFI or similar contract). This will be:

- An enhanced DBS check with barred list information for contractors engaging in regulated activity
- An enhanced DBS check, not including barred list information, for all other contractors who are not in regulated activity but whose work provides them with an opportunity for regular contact with children

We will obtain the DBS check for self-employed contractors.

We will not keep copies of such checks for longer than 6 months.

Contractors who have not had any checks will not be allowed to work unsupervised or engage in regulated activity under any circumstances.

We will check the identity of all contractors and their staff on arrival at the school.

Trainee/student teachers

Where applicants for initial teacher training are salaried by us, we will ensure that all necessary checks are carried out.

Where trainee teachers are fee-funded, we will obtain written confirmation from the training provider that necessary checks have been carried out and that the trainee has been judged by the provider to be suitable to work with children.

Volunteers

We will:

- Never leave an unchecked volunteer unsupervised or allow them to work in regulated activity
- Obtain an enhanced DBS check with barred list information for all volunteers who are new to working in regulated activity
- Carry out a risk assessment when deciding whether to seek an enhanced DBS check without barred list information for any volunteers not engaging in regulated activity. We will retain a record of this risk assessment

Governors

All Trustees, local governors and members will have an enhanced DBS check without barred list information. They will have an enhanced DBS check with barred list information if working in regulated activity.

The chair of the board will have their DBS check countersigned by the secretary of state.

All proprietors, Trustees, local governors and members will also have the following checks:

- A section 128 check (to check prohibition on participation in management under [section 128 of the Education and Skills Act 2008](#)).
- Identity
- Right to work in the UK
- Other checks deemed necessary if they have lived or worked outside the UK

All governors will also have the following checks:

- Identity
- Right to work in the UK
- Other checks deemed necessary if they have lived or worked outside the UK

Staff working in alternative provision settings

Where we place a pupil with an alternative provision provider, we obtain written confirmation from the provider that they have carried out the appropriate safeguarding checks on individuals working there that we would otherwise perform.

Adults who supervise pupils on work experience

When organising work experience, we will ensure that policies and procedures are in place to protect children from harm.

We will also consider whether it is necessary for barred list checks to be carried out on the individuals who supervise a pupil under 16 on work experience. This will depend on the specific circumstances of the work experience, including the nature of the supervision, the frequency of the activity being supervised, and whether the work is regulated activity.

Pupils staying with host families

Where the school makes arrangements for pupils to be provided with care and accommodation by a host family to which they are not related (for example, during a foreign exchange visit), we will request enhanced DBS checks with barred list information on those people.

Where the school is organising such hosting arrangements overseas and host families cannot be checked in the same way, we will work with our partner schools abroad to ensure that similar assurances are undertaken prior to the visit.

Appendix 3: allegations of abuse made against staff (including low level concerns)

Section 1: allegations that may meet the harm threshold

This section applies to all cases in which it is alleged that a current member of staff, including a supply teacher, volunteer or contractor, has:

- Behaved in a way that has harmed a child, or may have harmed a child, and/or
- Possibly committed a criminal offence against or related to a child, and/or
- Behaved towards a child or children in a way that indicates they may pose a risk of harm to children, and/or
- Behaved or may have behaved in a way that indicates they may not be suitable to work with children – this includes behaviour taking place both inside and outside of school

If we're in any doubt as to whether a concern meets the harm threshold, we will consult our Local Authority Designated Officer (LADO).

We will deal with any allegation of abuse quickly, in a fair and consistent way that provides effective child protection while also supporting the individual who is the subject of the allegation.

A 'case manager' will lead any investigation. This will be the Headteacher or Head of School, a senior member of staff appointed by the Headteacher or Head of School or the Chair of Governors where the Headteacher or Head of School is the subject of the allegation. The case manager will be identified at the earliest opportunity.

Our procedures for dealing with allegations will be applied with common sense and judgement.

If we receive an allegation of an incident happening while an individual or organisation was using the school premises to run activities for children, we will follow our safeguarding policies and procedures and inform our LADO.

Suspension of the accused until the case is resolved

Suspension of the accused will not be the default position, and will only be considered in cases where there is reason to suspect that a child or other children is/are at risk of harm, or the case is so serious that there might be grounds for dismissal. In such cases, we will only suspend an individual if we have considered all other options available and there is no reasonable alternative.

Based on an assessment of risk, we will consider alternatives such as:

- Redeployment within the school so that the individual does not have direct contact with the child or children concerned
- Providing an assistant to be present when the individual has contact with children
- Redeploying the individual to alternative work in the school so that they do not have unsupervised access to children
- Moving the child or children to classes where they will not come into contact with the individual, making it clear that this is not a punishment and parents/carers have been consulted
- Temporarily redeploying the individual to another role in a different location, for example to an alternative school or other work for the Achieve and Learn Trust.

If in doubt, the case manager will seek views from the school's personnel adviser and the designated officer at the local authority, as well as the police and local authority children's social care where they have been involved.

Definitions for outcomes of allegation investigations

- **Substantiated:** there is sufficient evidence to prove the allegation
- **Malicious:** there is sufficient evidence to disprove the allegation and there has been a deliberate act to deceive, or to cause harm to the subject of the allegation

- **False:** there is sufficient evidence to disprove the allegation
- **Unsubstantiated:** there is insufficient evidence to either prove or disprove the allegation (this does not imply guilt or innocence)
- **Unfounded:** to reflect cases where there is no evidence or proper basis which supports the allegation being made

Procedure for dealing with allegations

In the event of an allegation that meets the criteria above, the case manager will take the following steps:

- Conduct basic enquiries in line with local procedures to establish the facts to help determine whether there is any foundation to the allegation before carrying on with the steps below
- Discuss the allegation with the designated officer at the local authority. This is to consider the nature, content and context of the allegation and agree a course of action, including whether further enquiries are necessary to enable a decision on how to proceed, and whether it is necessary to involve the police and/or local authority children's social care services. (The case manager may, on occasion, consider it necessary to involve the police *before* consulting the designated officer – for example, if the accused individual is deemed to be an immediate risk to children or there is evidence of a possible criminal offence. In such cases, the case manager will notify the designated officer as soon as practicably possible after contacting the police)
- Inform the accused individual of the concerns or allegations and likely course of action as soon as possible after speaking to the designated officer (and the police or local authority children's social care services, where necessary). Where the police and/or local authority children's social care services are involved, the case manager will only share such information with the individual as has been agreed with those agencies
- Where appropriate (in the circumstances described above), carefully consider whether suspension of the individual from contact with children at the school is justified or whether alternative arrangements such as those outlined above can be put in place. Advice will be sought from the designated officer, police and/or local authority children's social care services, as appropriate
- Where the case manager is concerned about the welfare of other children in the community or the individual's family, they will discuss these concerns with the DSL and make a risk assessment of the situation. If necessary, the DSL may make a referral to local authority children's social care
- **If immediate suspension is considered necessary**, agree and record the rationale for this with the designated officer. The record will include information about the alternatives to suspension that have been considered, and why they were rejected. Written confirmation of the suspension will be provided to the individual facing the allegation or concern within 1 working day, and the individual will be given a named contact at the school and their contact details
- **If it is decided that no further action is to be taken** in regard to the subject of the allegation or concern, record this decision and the justification for it and agree with the designated officer what information should be put in writing to the individual and by whom, as well as what action should follow both in respect of the individual and those who made the initial allegation
- **If it is decided that further action is needed**, take steps as agreed with the designated officer to initiate the appropriate action in school and/or liaise with the police and/or local authority children's social care services as appropriate
- Provide effective support for the individual facing the allegation or concern, including appointing a named representative to keep them informed of the progress of the case and considering what other support is appropriate
- Inform the parents or carers of the child/children involved about the allegation as soon as possible if they do not already know (following agreement with local authority children's social care services and/or the police, if applicable). The case manager will also inform the parents or carers of the requirement to maintain confidentiality about any allegations made against teachers (where this applies) while investigations are ongoing. Any parent or carer who wishes to have the confidentiality restrictions removed in respect of a teacher will be advised to seek legal advice

- Keep the parents or carers of the child/children involved informed of the progress of the case (only in relation to their child – no information will be shared regarding the staff member)
- Make a referral to the DBS where it is thought that the individual facing the allegation or concern has engaged in conduct that harmed or is likely to harm a child, or if the individual otherwise poses a risk of harm to a child

If the school is made aware that the secretary of state has made an interim prohibition order in respect of an individual, we will immediately suspend that individual from teaching, pending the findings of the investigation by the Teaching Regulation Agency.

Where the police are involved, wherever possible the school will ask the police at the start of the investigation to obtain consent from the individuals involved to share their statements and evidence for use in the school's disciplinary process, should this be required at a later point.

Additional considerations for supply teachers and all contracted staff

If there are concerns or an allegation is made against someone not directly employed by the school, such as a supply teacher or contracted staff member provided by an agency, we will take the actions below in addition to our standard procedures.

- We will not decide to stop using an individual due to safeguarding concerns without finding out the facts and liaising with our LADO to determine a suitable outcome
- The governing board will discuss with the agency whether it is appropriate to suspend the individual, or redeploy them to another part of the school, while the school carries out the investigation
- We will involve the agency fully, but the school will take the lead in collecting the necessary information and providing it to the LADO as required
- We will address issues such as information sharing, to ensure any previous concerns or allegations known to the agency are taken into account (we will do this, for example, as part of the allegations management meeting or by liaising directly with the agency where necessary)

When using an agency, we will inform them of our process for managing allegations, and keep them updated about our policies as necessary, and will invite the agency's HR manager or equivalent to meetings as appropriate.

Timescales

We will deal with all allegations as quickly and effectively as possible and will endeavour to comply with the following timescales, where reasonably practicable:

- Any cases where it is clear immediately that the allegation is unsubstantiated or malicious should be resolved within 1 week
- If the nature of an allegation does not require formal disciplinary action, appropriate action should be taken within 3 working days
- If a disciplinary hearing is required and can be held without further investigation, this should be held within 15 working days

However, these are objectives only and where they are not met, we will endeavour to take the required action as soon as possible thereafter.

Specific actions

Action following a criminal investigation or prosecution

The case manager will discuss with the local authority's designated officer whether any further action, including disciplinary action, is appropriate and, if so, how to proceed, taking into account information provided by the police and/or local authority children's social care services.

Conclusion of a case where the allegation is substantiated

If the allegation is substantiated and the individual is dismissed or the school ceases to use their services, or the individual resigns or otherwise ceases to provide their services, the school will make a referral to the DBS for consideration of whether inclusion on the barred lists is required.

If the individual concerned is a member of teaching staff, the school will consider whether to refer the matter to the Teaching Regulation Agency to consider prohibiting the individual from teaching.

Individuals returning to work after suspension

If it is decided on the conclusion of a case that an individual who has been suspended can return to work, the case manager will consider how best to facilitate this.

The case manager will also consider how best to manage the individual's contact with the child or children who made the allegation, if they are still attending the school.

Unsubstantiated, unfounded, false or malicious reports

If a report is:

- Determined to be unsubstantiated, unfounded, false or malicious, the DSL will consider the appropriate next steps. If they consider that the child and/or person who made the allegation is in need of help, or the allegation may have been a cry for help, a referral to local authority children's social care may be appropriate
- Shown to be deliberately invented, or malicious, the school will consider whether any disciplinary action is appropriate against the individual(s) who made it

Unsubstantiated, unfounded, false or malicious allegations

If an allegation is:

- Determined to be unsubstantiated, unfounded, false or malicious, the LADO and case manager will consider the appropriate next steps. If they consider that the child and/or person who made the allegation is in need of help, or the allegation may have been a cry for help, a referral to local authority children's social care may be appropriate
- Shown to be deliberately invented, or malicious, the school will consider whether any disciplinary action is appropriate against the individual(s) who made it

Confidentiality and information sharing

The school will make every effort to maintain confidentiality and guard against unwanted publicity while an allegation is being investigated or considered.

The case manager will take advice from the LADO, police and local authority children's social care services, as appropriate, to agree:

- Who needs to know about the allegation and what information can be shared
- How to manage speculation, leaks and gossip, including how to make parents or carers of a child/children involved aware of their obligations with respect to confidentiality
- What, if any, information can be reasonably given to the wider community to reduce speculation
- How to manage press interest if, and when, it arises

Record-keeping

The case manager will maintain clear records about any case where the allegation or concern meets the criteria above and store them on the individual's confidential personnel file for the duration of the case.

The records of any allegation that, following an investigation, is found to be malicious or false will be deleted from the individual's personnel file (unless the individual consents for the records to be retained on the file).

For all other allegations (which are not found to be malicious or false), the following information will be kept on the file of the individual concerned:

- A clear and comprehensive summary of the allegation
- Details of how the allegation was followed up and resolved
- Notes of any action taken, decisions reached and the outcome
- A declaration on whether the information will be referred to in any future reference

In these cases, the school will provide a copy to the individual, in agreement with local authority children's social care or the police as appropriate.

We will retain all records at least until the accused individual has reached normal pension age, or for 10 years from the date of the allegation if that is longer.

References

When providing employer references, we will:

- Not refer to any allegation that has been found to be false, unfounded, unsubstantiated or malicious, or any repeated allegations which have all been found to be false, unfounded, unsubstantiated or malicious
- Include substantiated allegations, provided that the information is factual and does not include opinions

Learning lessons

After any cases where the allegations are *substantiated*, the case manager will review the circumstances of the case with the local authority's designated officer to determine whether there are any improvements that we can make to the school's procedures or practice to help prevent similar events in the future.

This will include consideration of (as applicable):

- Issues arising from the decision to suspend the member of staff
- The duration of the suspension
- Whether or not the suspension was justified
- The use of suspension when the individual is subsequently reinstated. We will consider how future investigations of a similar nature could be carried out without suspending the individual

For all other cases, the case manager will consider the facts and determine whether any improvements can be made.

Non-recent allegations

Abuse can be reported, no matter how long ago it happened.

We will report any non-recent allegations made by a child to the LADO in line with our local authority's procedures for dealing with non-recent allegations.

Where an adult makes an allegation to the school that they were abused as a child, we will advise the individual to report the allegation to the police.

Section 2: concerns that do not meet the harm threshold

This section applies to all concerns (including allegations) about members of staff, including supply teachers, volunteers and contractors, which do not meet the harm threshold set out in section 1 above.

Concerns may arise through, for example:

- Suspicion
- Complaint
- Safeguarding concern or allegation from another member of staff
- Disclosure made by a child, parent or other adult within or outside the school
- Pre-employment vetting checks

We recognise the importance of responding to and dealing with any concerns in a timely manner to safeguard the welfare of children.

Definition of low-level concerns

The term 'low-level' concern is any concern – no matter how small – that an adult working in or on behalf of the school may have acted in a way that:

- Is inconsistent with the staff code of conduct, including inappropriate conduct outside of work, **and**
- Does not meet the allegations threshold or is otherwise not considered serious enough to consider a referral to the designated officer at the local authority

Examples of such behaviour could include, but are not limited to:

- Being overly friendly with children
- Having favourites
- Taking photographs of children on their mobile phone
- Engaging with a child on a one-to-one basis in a secluded area or behind a closed door
- Humiliating pupils

Sharing low-level concerns

We recognise the importance of creating a culture of openness, Trust and transparency to encourage all staff to confidentially share low-level concerns so that they can be addressed appropriately.

We will create this culture by:

- Ensuring staff are clear about what appropriate behaviour is, and are confident in distinguishing expected and appropriate behaviour from concerning, problematic or inappropriate behaviour, in themselves and others
- Empowering staff to share any low-level concerns as per section 7.7 of this policy
- Empowering staff to self-refer
- Addressing unprofessional behaviour and supporting the individual to correct it at an early stage
- Providing a responsive, sensitive and proportionate handling of such concerns when they are raised
- Helping to identify any weakness in the school's safeguarding system

Staff will receive training annually on the importance of reporting low level concerns to the Headteacher or Head of School and/or DSL. All reports will be treated in confidence.

Responding to low-level concerns

If the concern is raised via a third party, the Headteacher or Head of School will collect evidence where necessary by speaking:

- Directly to the person who raised the concern, unless it has been raised anonymously
- To the individual involved and any witnesses

The Headteacher or Head of School will use the information collected to categorise the type of behaviour and determine any further action, in line with the Trust's staff code of conduct. The Headteacher or Head of School will be the ultimate decision-maker in respect of all low-level concerns, though they may wish to collaborate with the DSL.

Record keeping

All low-level concerns will be recorded in writing. In addition to details of the concern raised, records will include the context in which the concern arose, any action taken and the rationale for decisions and action taken.

Records will be:

- Kept confidential, held securely and comply with the DPA 2018 and UK GDPR
- Reviewed so that potential patterns of concerning, problematic or inappropriate behaviour can be identified. Where a pattern of such behaviour is identified, we will decide on a course of action, either through our disciplinary procedures or, where a pattern of behaviour moves from a concern to meeting the harm threshold as described in section 1 of this appendix, we will refer it to the designated officer at the local authority
- Retained at least until the individual leaves employment at the school

Where a low-level concern relates to a supply teacher or contractor, we will notify the individual's employer, so any potential patterns of inappropriate behaviour can be identified.

References

We will not include low-level concerns in references unless:

- The concern (or group of concerns) has met the threshold for referral to the designated officer at the local authority and is found to be substantiated; and/or
- The concern (or group of concerns) relates to issues which would ordinarily be included in a reference, such as misconduct or poor performance

Appendix 4: specific safeguarding issues

Assessing adult-involved nude and semi-nude sharing incidents

All adult-involved nude and semi-nude image sharing incidents are child sexual abuse offences and must immediately be referred to police/social care. However, as adult-involved incidents can present as child-on-child nude/semi-nude sharing, it may be difficult to initially assess adult involvement.

There are two types of common adult-involved incidents: sexually motivated incidents and financially motivated incidents.

Sexually motivated incidents

In this type of incident, an adult offender obtains nude and semi-nudes directly from a child or young person using online platforms.

To make initial contact, the offender may present as themselves or use a false identity on the platform, sometimes posing as a child or young person to encourage a response and build Trust. The offender often grooms the child or young person on social media, in chatrooms or on gaming platforms, and may then move the conversation to a private messaging app or an end-to-end encrypted (E2EE) environment where a request for a nude or semi-nude is made. To encourage the child or young person to create and share nude or semi-nude, the offender may share pornography or child sexual abuse material (images of other young people), including AI-generated material.

Once a child or young person shares a nude or semi-nude, an offender may blackmail the child or young person into sending more images by threatening to release them online and/or send them to friends and family.

Potential signs of adult-involved grooming and coercion can include the child or young person being:

- Contacted by an online account that they do not know but appears to be another child or young person
- Quickly engaged in sexually explicit communications, which may include the offender sharing unsolicited images
- Moved from a public to a private/E2EE platform
- Coerced/pressured into doing sexual things, including creating nudes and semi-nudes
- Offered something of value such as money or gaming credits
- Threatened or blackmailed into carrying out further sexual activity. This may follow the child or young person initially sharing the image or the offender sharing a digitally manipulated image of the child or young person to extort 'real' images

Financially motivated incidents

Financially motivated sexual extortion (often known as 'sextortion') is an adult-involved incident in which an adult offender (or offenders) threatens to release nudes or semi-nudes of a child or young person unless they pay money or do something else to benefit them.

Unlike other adult-involved incidents, financially motivated sexual extortion is usually carried out by offenders working in sophisticated organised crime groups (OCGs) overseas and are only motivated by profit. Adults are usually targeted by these groups too.

Offenders will often use a false identity, sometimes posing as a child or young person, or hack another young person's account to make initial contact. To financially blackmail the child or young person, they may:

- Groom or coerce the child or young person into sending nudes or semi-nudes and financially blackmail them
- Use images that have been stolen from the child or young person taken through hacking their account
- Use digitally manipulated images, including AI-generated images, of the child or young person

The offender may demand payment or the use of the victim's bank account for the purposes of money laundering.

Potential signs of adult-involved financially motivated sexual extortion can include the child or young person being:

- Contacted by an online account that they do not know but appears to be another child or young person. They may be contacted by a hacked account of a child or young person
- Quickly engaged in sexually explicit communications which may include the offender sharing an image first
- Moved from a public to a private/E2EE platform
- Pressured into taking nudes or semi-nudes
- Told they have been hacked and they have access to their images, personal information and contacts
- Blackmailed into sending money or sharing bank account details after sharing an image or the offender sharing hacked or digitally manipulated images of the child or young person

Children who are absent from education

A child being absent from education, particularly repeatedly, can be a warning sign of a range of safeguarding issues. This might include abuse or neglect, such as sexual abuse or exploitation or child criminal exploitation, or issues such as mental health problems, substance abuse, radicalisation, FGM or forced marriage.

There are many circumstances where a child may be absent or become missing from education, but some children are particularly at risk. These include children who:

- Are at risk of harm or neglect
- Are at risk of forced marriage or FGM
- Come from Gypsy, Roma, or Traveller families
- Come from the families of service personnel
- Go missing or run away from home or care
- Are supervised by the youth justice system
- Cease to attend a school
- Come from new migrant families

We will follow our procedures for unauthorised absence and for dealing with children who are absent from education, particularly on repeat occasions, to help identify the risk of abuse, exploitation and neglect, including sexual exploitation, and to help prevent the risks of going missing in future. This includes informing the local authority if a child leaves the school without a new school being named, and adhering to requirements with respect to sharing information with the local authority, when applicable, when removing a child's name from the admission register at non-standard transition points.

Staff will be trained in signs to look out for and the individual triggers to be aware of when considering the risks of potential safeguarding concerns which may be related to being absent, such as travelling to conflict zones, FGM and forced marriage.

If a staff member suspects that a child is suffering from harm or neglect, we will follow local child protection procedures, including with respect to making reasonable enquiries. We will make an immediate referral to the local authority children's social care team, and the police, if the child is suffering or likely to suffer from harm, or in immediate danger.

Child criminal exploitation

Child criminal exploitation (CCE) is a form of abuse where an individual or group takes advantage of an imbalance of power to coerce, control, manipulate or deceive a child into criminal activity. It may involve an exchange for something the victim needs or wants, and/or for the financial or other advantage of the perpetrator or facilitator, and/or through violence or the threat of violence.

The abuse can be perpetrated by males or females, and children or adults. It can be a one-off occurrence or a series of incidents over time, and range from opportunistic to complex organised abuse.

The victim can be exploited even when the activity appears to be consensual. It does not always involve physical contact and can happen online. For example, young people may be forced to work in cannabis factories, coerced into moving drugs or money across the country (county lines), forced to shoplift or pickpocket, or to threaten other young people.

Indicators of CCE can include a child:

- Appearing with unexplained gifts or new possessions
- Associating with other young people involved in exploitation
- Suffering from changes in emotional wellbeing
- Misusing drugs and alcohol
- Going missing for periods of time or regularly coming home late
- Regularly missing school or education
- Not taking part in education

If a member of staff suspects CCE, they will discuss this with the DSL. The DSL will trigger the local safeguarding procedures, including a referral to the local authority's children's social care team and the police, if appropriate.

Child sexual exploitation

Child sexual exploitation (CSE) is a form of child sexual abuse where an individual or group takes advantage of an imbalance of power to coerce, manipulate or deceive a child into sexual activity. It may involve an exchange for something the victim needs or wants and/or for the financial advantage or increased status of the perpetrator or facilitator. It may, or may not, be accompanied by violence or threats of violence.

The abuse can be perpetrated by males or females, and children or adults. It can be a one-off occurrence or a series of incidents over time, and range from opportunistic to complex organised abuse.

The victim can be exploited even when the activity appears to be consensual. Children or young people who are being sexually exploited may not understand that they are being abused. They often Trust their abuser and may be tricked into believing they are in a loving, consensual relationship.

CSE can include both physical contact (penetrative and non-penetrative acts) and non-contact sexual activity. It can also happen online. For example, young people may be persuaded or forced to share sexually explicit images of themselves, have sexual conversations by text, or take part in sexual activities using a webcam. CSE may also occur without the victim's immediate knowledge, for example through others copying videos or images.

In addition to the CCE indicators above, indicators of CSE can include a child:

- Having an older boyfriend or girlfriend
- Suffering from sexually transmitted infections or becoming pregnant

If a member of staff suspects CSE, they will discuss this with the DSL. The DSL will trigger the local safeguarding procedures, including a referral to the local authority's children's social care team and the police, if appropriate.

Child-on-child abuse

Child-on-child abuse is when children abuse other children. This type of abuse can take place inside and outside of school. It can also take place both face-to-face and online, and can occur simultaneously between the 2.

Our school has a zero-tolerance approach to sexual violence and sexual harassment. We recognise that even if there are there no reports, that doesn't mean that this kind of abuse isn't happening.

Child-on-child abuse is most likely to include, but may not be limited to:

- Bullying (including cyber-bullying, prejudice-based and discriminatory bullying)
- Abuse in intimate personal relationships between children (this is sometimes known as ‘teenage relationship abuse’)
- Physical abuse such as hitting, kicking, shaking, biting, hair pulling, or otherwise causing physical harm (this may include an online element which facilitates, threatens and/or encourages physical abuse)
- Sexual violence, such as rape, assault by penetration and sexual assault (this may include an online element which facilitates, threatens and/or encourages sexual violence)
- Sexual harassment, such as sexual comments, remarks, jokes and online sexual harassment, which may be standalone or part of a broader pattern of abuse
- Causing someone to engage in sexual activity without consent, such as forcing someone to strip, touch themselves sexually, or to engage in sexual activity with a third party
- Consensual and non-consensual sharing of nude and semi-nude images and/or videos (also known as sexting or youth produced sexual imagery)
- Upskirting, which typically involves taking a picture under a person’s clothing without their permission, with the intention of viewing their genitals or buttocks to obtain sexual gratification, or cause the victim humiliation, distress or alarm
- Initiation/hazing type violence and rituals (this could include activities involving harassment, abuse or humiliation used as a way of initiating a person into a group and may also include an online element)

Where children abuse their peers online, this can take the form of, for example, abusive, harassing, and misogynistic messages; the non-consensual sharing of indecent images, especially around chat groups; and the sharing of abusive images and pornography, to those who don't want to receive such content.

If staff have any concerns about child-on-child abuse, or a child makes a report to them, they will follow the procedures set out in section 7 of this policy, as appropriate. In particular, section 7.8 and 7.9 set out more detail about our school's approach to this type of abuse.

When considering instances of harmful sexual behaviour between children, we will consider their ages and stages of development. We recognise that children displaying harmful sexual behaviour have often experienced their own abuse and trauma, and will offer them appropriate support.

Domestic abuse

Children can witness and be adversely affected by domestic abuse and/or violence at home where it occurs between family members. In some cases, a child may blame themselves for the abuse or may have had to leave the family home as a result.

Types of domestic abuse include intimate partner violence, abuse by family members, teenage relationship abuse (abuse in intimate personal relationships between children) and child/adolescent to parent violence and abuse. It can be physical, sexual, financial, psychological or emotional. It can also include ill treatment that isn't physical, as well as witnessing the ill treatment of others. This can be particularly relevant, for example, in relation to the impact on children of all forms of domestic abuse, including where they see, hear or experience its effects.

Anyone can be a victim of domestic abuse, regardless of gender, age, ethnicity, socioeconomic status, sexuality or background, and domestic abuse can take place inside or outside of the home. Children who witness domestic abuse are also victims.

Older children may also experience and/or be the perpetrators of domestic abuse and/or violence in their own personal relationships. This can include sexual harassment.

Exposure to domestic abuse and/or violence can have a serious, long-lasting emotional and psychological impact on children and affect their health, wellbeing, development and ability to learn.

If police are called to an incident of domestic abuse and any children in the household have experienced the incident, the police will inform the key adult in school through ENCOMPASS (usually the designated safeguarding lead) before the child or children arrive at school the following day. See Appendix 8.

The DSL will provide support according to the child's needs and update records about their circumstances.

Homelessness

Being homeless or being at risk of becoming homeless presents a real risk to a child's welfare.

The DSL will be aware of contact details and referral routes in to the local housing authority so they can raise/progress concerns at the earliest opportunity (where appropriate and in accordance with local procedures).

Where a child has been harmed or is at risk of harm, the DSL will also make a referral to local authority children's social care.

So-called 'honour-based' abuse (including FGM and forced marriage)

So-called 'honour-based' abuse (HBA) encompasses incidents or crimes committed to protect or defend the honour of the family and/or community, including FGM, forced marriage, and practices such as breast ironing.

Abuse committed in this context often involves a wider network of family or community pressure and can include multiple perpetrators.

All forms of HBA are abuse and will be handled and escalated as such. All staff will be alert to the possibility of a child being at risk of HBA or already having suffered it. If staff have a concern, they will speak to the DSL, who will activate local safeguarding procedures.

FGM

The DSL will make sure that staff have access to appropriate training to equip them to be alert to children affected by FGM or at risk of FGM.

Section 7.3 of this policy sets out the procedures to be followed if a staff member discovers that an act of FGM appears to have been carried out or suspects that a pupil is at risk of FGM.

Indicators that FGM has already occurred include:

- A pupil confiding in a professional that FGM has taken place
- A mother/family member disclosing that FGM has been carried out
- A family/pupil already being known to social services in relation to other safeguarding issues
- A girl:
 - Having difficulty walking, sitting or standing, or looking uncomfortable
 - Finding it hard to sit still for long periods of time (where this was not a problem previously)
 - Spending longer than normal in the bathroom or toilet due to difficulties urinating
 - Having frequent urinary, menstrual or stomach problems
 - Avoiding physical exercise or missing PE
 - Being repeatedly absent from school, or absent for a prolonged period
 - Demonstrating increased emotional and psychological needs – for example, withdrawal or depression, or significant change in behaviour
 - Being reluctant to undergo any medical examinations
 - Asking for help, but not being explicit about the problem
 - Talking about pain or discomfort between her legs

Potential signs that a pupil may be at risk of FGM include:

- The girl's family having a history of practising FGM (this is the biggest risk factor to consider)
- FGM being known to be practised in the girl's community or country of origin
- A parent or family member expressing concern that FGM may be carried out

· A family not engaging with professionals (health, education or other) or already being known to social care in relation to other safeguarding issues

· A girl:

- Having a mother, older sibling or cousin who has undergone FGM
- Having limited level of integration within UK society
- Confiding to a professional that she is to have a “special procedure” or to attend a special occasion to “become a woman”
- Talking about a long holiday to her country of origin or another country where the practice is prevalent, or parents/carers stating that they or a relative will take the girl out of the country for a prolonged period
- Requesting help from a teacher or another adult because she is aware or suspects that she is at immediate risk of FGM
- Talking about FGM in conversation – for example, a girl may tell other children about it (although it is important to take into account the context of the discussion)
- Being unexpectedly absent from school
- Having sections missing from her ‘red book’ (child health record) and/or attending a travel clinic or equivalent for vaccinations/anti-malarial medication

The above indicators and risk factors are not intended to be exhaustive.

Forced marriage

Forcing a person into marriage is a crime. A forced marriage is one entered into without the full and free consent of 1 or both parties and where violence, threats, or any other form of coercion is used to cause a person to enter into a marriage. Threats can be physical or emotional and psychological.

It is also illegal to cause a child under the age of 18 to marry, even if violence, threats or coercion are not involved.

Staff will receive training around forced marriage and the presenting symptoms. We are aware of the ‘1 chance’ rule, i.e. we may only have 1 chance to speak to the potential victim and only 1 chance to save them.

If a member of staff suspects that a pupil is being forced into marriage, they will speak to the pupil about their concerns in a secure and private place. They will then report this to the DSL.

The DSL will:

- Speak to the pupil about the concerns in a secure and private place
- Activate the local safeguarding procedures and refer the case to the local authority’s designated officer
- Seek advice from the Forced Marriage Unit on 020 7008 0151 or fmfu@fco.gov.uk
- Refer the pupil to an education welfare officer, pastoral tutor, learning mentor, or school counsellor, as appropriate

Preventing radicalisation

· **Radicalisation** refers to the process of a person legitimising support for, or use of, terrorist violence

· **Extremism** is the promotion or advancement of an ideology based on violence, hatred or intolerance, that aims to:

- Negate or destroy the fundamental rights and freedoms of others; or
- Undermine, overturn or replace the UK’s system of liberal parliamentary democracy and democratic rights; or
- Intentionally create a permissive environment for others to achieve the results outlined in either of the above points

• **Terrorism** is an action that:

- Endangers or causes serious violence to a person/people;
- Causes serious damage to property; or
- Seriously interferes or disrupts an electronic system

The use or threat of terrorism must be designed to influence the government or to intimidate the public and is made for the purpose of advancing a political, religious or ideological cause.

Schools have a duty to prevent children from becoming involved with or supporting terrorism. The DSL, or designated Prevent lead, will undertake in-depth Prevent awareness training, including on extremist and terrorist ideologies. They'll make sure that staff have access to appropriate training to equip them to identify children at risk.

We will assess the risk of children in our school from becoming involved with or supporting terrorism. This assessment will be based on an understanding of the potential risk in our local area, in collaboration with our local safeguarding partners and local police force.

We will ensure that suitable internet filtering is in place, and equip our pupils to stay safe online at school and at home.

There is no single way of identifying an individual who is likely to be susceptible to radicalisation into terrorism. Radicalisation can occur quickly or over a long period.

Staff will be alert to changes in pupils' behaviour.

The government website [Educate Against Hate](#) and charity [NSPCC](#) say that signs that a pupil is being radicalised can include:

- Refusal to engage with, or becoming abusive to, peers who are different from themselves
- Becoming susceptible to conspiracy theories and feelings of persecution
- Changes in friendship groups and appearance
- Rejecting activities they used to enjoy
- Converting to a new religion
- Isolating themselves from family and friends
- Talking as if from a scripted speech
- An unwillingness or inability to discuss their views
- A sudden disrespectful attitude towards others
- Increased levels of anger
- Increased secretiveness, especially around internet use
- Expressions of sympathy for extremist ideologies and groups, or justification of their actions
- Accessing extremist material online, including on Facebook or Twitter
- Possessing extremist literature
- Being in contact with extremist recruiters and joining, or seeking to join, extremist organisations

Children who are at risk of radicalisation may have low self-esteem, or be victims of bullying or discrimination. It is important to note that these signs can also be part of normal teenage behaviour – staff should have confidence in their instincts and seek advice if something feels wrong.

If staff are concerned about a pupil, they will follow our procedures set out in section 7.5 of this policy, including discussing their concerns with the DSL.

Staff should **always** take action if they are worried.

Sexual violence and sexual harassment between children in schools

Sexual violence and sexual harassment can occur:

- Between 2 children of any age and sex
- Through a group of children sexually assaulting or sexually harassing a single child or group of children
- Online and face to face (both physically and verbally)

Sexual violence and sexual harassment exist on a continuum and may overlap.

Children who are victims of sexual violence and sexual harassment will likely find the experience stressful and distressing. This will, in all likelihood, adversely affect their educational attainment and will be exacerbated if the alleged perpetrator(s) attends the same school.

If a victim reports an incident, it is essential that staff make sure they are reassured that they are being taken seriously and that they will be supported and kept safe. A victim should never be given the impression that they are creating a problem by reporting any form of abuse or neglect. Nor should a victim ever be made to feel ashamed for making a report.

When supporting victims, staff will:

- Reassure victims that the law on child-on-child abuse is there to protect them, not criminalise them
- Regularly review decisions and actions, and update policies with lessons learnt
- Look out for potential patterns of concerning, problematic or inappropriate behaviour, and decide on a course of action where we identify any patterns
- Consider if there are wider cultural issues within the school that enabled inappropriate behaviour to occur and whether revising policies and/or providing extra staff training could minimise the risk of it happening again
- Remain alert to the possible challenges of detecting signs that a child has experienced sexual violence, and show sensitivity to their needs

Some groups are potentially more at risk. Evidence shows that girls, children with SEN and/or disabilities, and lesbian, gay, bisexual and transgender (LGBT) children are at greater risk.

Staff should be aware of the importance of:

- Challenging inappropriate behaviours
- Making clear that sexual violence and sexual harassment is not acceptable, will never be tolerated and is not an inevitable part of growing up
- Challenging physical behaviours (potentially criminal in nature), such as grabbing bottoms, breasts and genitalia, pulling down trousers, flicking bras and lifting up skirts. Dismissing or tolerating such behaviours risks normalising them

If staff have any concerns about sexual violence or sexual harassment, or a child makes a report to them, they will follow the procedures set out in section 7 of this policy, as appropriate. In particular, section 7.8 and 7.9 set out more detail about our school's approach to this type of abuse.

Serious violence

Indicators which may signal that a child is at risk from, or involved with, serious violent crime may include:

- Increased absence from school
- Change in friendships or relationships with older individuals or groups
- Significant decline in performance
- Signs of self-harm or a significant change in wellbeing
- Signs of assault or unexplained injuries

- Unexplained gifts or new possessions (this could indicate that the child has been approached by, or is involved with, individuals associated with criminal networks or gangs and may be at risk of criminal exploitation (see above))

Risk factors which increase the likelihood of involvement in serious violence include:

- Being male
- Having been frequently absent or permanently excluded from school
- Having experienced child maltreatment
- Having been involved in offending, such as theft or robbery

Staff will be aware of these indicators and risk factors. If a member of staff has a concern about a pupil being involved in, or at risk of, serious violence, they will report this to the DSL.

Checking the identity and suitability of visitors

All visitors will be required to verify their identity to the satisfaction of staff.

If the visitor is unknown to the setting, we will check their credentials and reason for visiting before allowing them to enter the setting. Visitors should be ready to produce identification.

Visitors are expected to sign the visitors' book and wear a visitor's badge.

Visitors new to the school are expected to read and understand the safeguarding leaflet which is available in reception.

Visitors to the school who are visiting for a professional purpose, such as educational psychologists and school improvement officers, will be asked to show photo ID and:

- Will be asked to show their DBS certificate, which will be checked alongside their photo ID; or
- The organisation sending the professional, such as the LA or educational psychology service, will provide prior written confirmation that an appropriate level of DBS check has been carried out (if this is provided, we will not ask to see the DBS certificate)

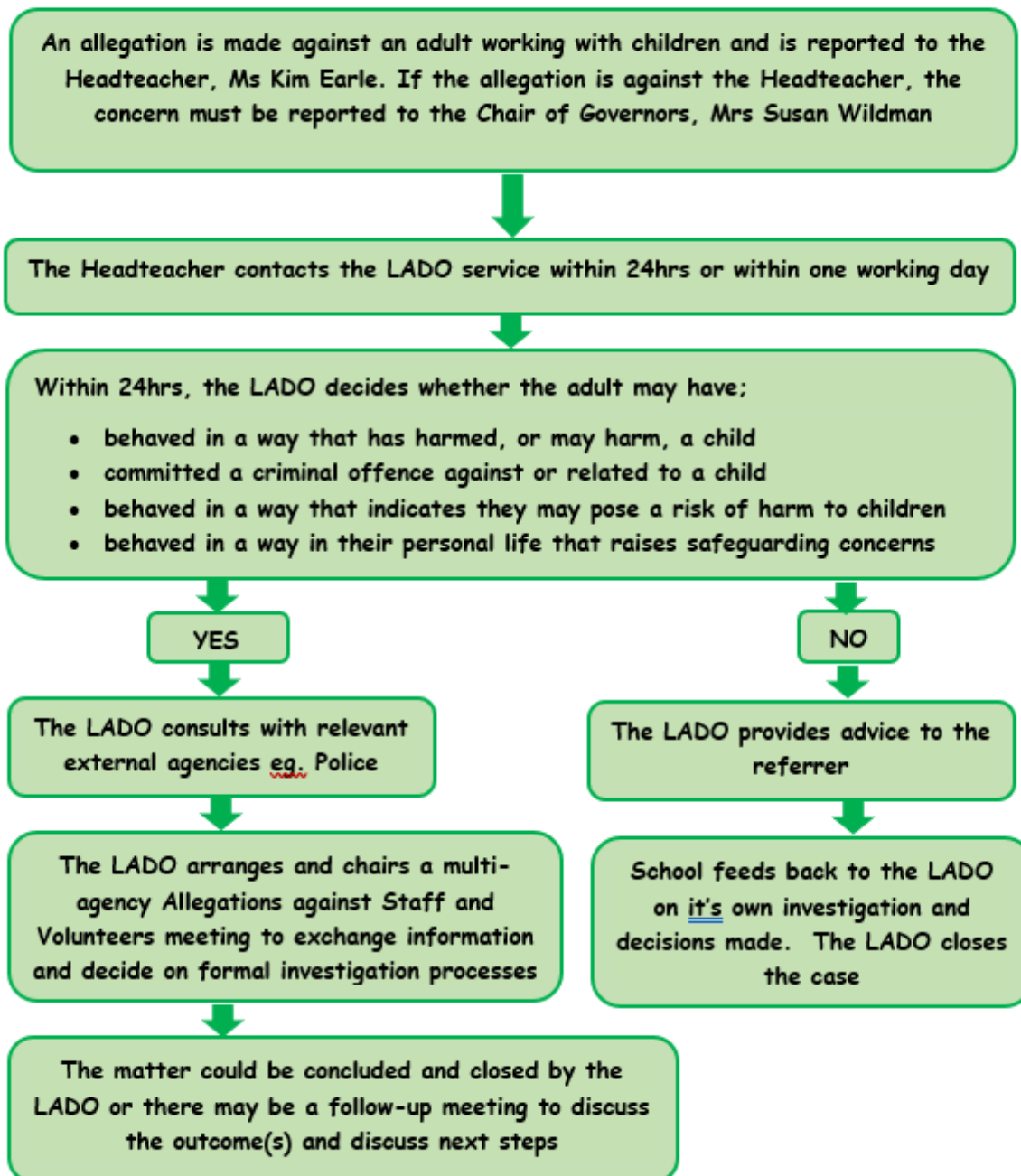
All other visitors, including visiting speakers, will be accompanied by a member of staff at all times. We will not invite into the school any speaker who is known to disseminate extremist views, and will carry out appropriate checks to ensure that any individual or organisation using school facilities is not seeking to disseminate extremist views or radicalise pupils or staff.

Missing pupils

Our procedures are designed to ensure that a missing child is found and returned to effective supervision as soon as possible. If a child goes missing, we will:

- Contact parents and ask them to contact their child on their mobile device if possible to locate them
- If the child cannot be located, school will ring police to report the child as missing – the incident number will be communicated to parents
- If the child goes missing on the way to school, it should be the parents who report the child as missing to police.
- Friends of the child will be spoken to discreetly to try to gather information about their possible whereabouts.

Allegations Against Members of Staff



Appendix 6: Wellbeing Provision Map

Tier 0: Universal Level Support- pastoral and response to general concerns. These concerns are categorised as short periods of feeling like they are not able to cope. These will be incidents which cause a child distress, but do not seem to have a long-term impact on wellbeing.		
What are the concerns?	Who should deal with this	What is our response?
Examples include: Minor illness such as headache or feeling sick. Pet death. Friendship problems/conflict/arguments at home. Low level worries which need reassurance- changes/transitions/tests etc. Short term academic stress. A history of mental health concerns which require monitoring.	Form tutor, LSA. Alert PSMs/SEND dept where necessary. Wellbeing support.	Listen to child and reassure. LSA to inform form tutor of the issue. Teacher/LSA to support, monitor and report concerns. If required, refer to PSMs, escalating to a higher tier using CPOMS. If issue does not resolve itself, move to tier 1. In case of minor illness, refer to wellbeing support to use judgement about student trying to get through the next lesson/morning/afternoon If student needs to go home, wellbeing to ask admin to call home to collect/advise.
Tier 1: Universal Level Support: response to low level incidents and concerns. These concerns are categorised as those which are longer term and are beginning to impact on the welfare and academic progress of the child.		
What are the concerns?	Who should deal with this	What is our response?
Examples include: Sustained periods (or series of short periods) of not feeling able to cope/low mood. Long term and repetitive friendship problems (over a term or more without resolution). More significant anxiety in class or surrounding a specific element of school/home life despite support from FT/PSM. Divorce of parents. Bereavement of extended family member (not parent/guardian/sibling). Emotional response to an upsetting event which causes a period of distress, but which does not cause a specific safeguarding concern.	Pastoral team to support directly or advise FT/SEND/wellbeing.	<ul style="list-style-type: none"> ➤ Ensure the FT is aware of the concern: LSA/FT to monitor. ➤ Pastoral concern placed on CPOMS to keep pastoral team informed or consider welfare/safeguarding notification-also on CPOMS. ➤ FT to contact parents to discuss concerns. ➤ Direct pastoral support from PSMs- either shorter/longer term (parents should be informed of any direct support by FT through provision mapping/email/phone call/face to face conversation. ➤ SENDCo consultation. ➤ If concerns continue or increase in severity- move to Tier 2. ➤ If incident is managed or reduces, consider moving down to Tier 0.
Tier 2: Targeted support- planned interventions in school to address mental health concerns. A sustained concern which is affecting the wellbeing and possibly academic progress of the young person. These could be long term concerns over anxiety, mental health, depression, or a response to an incident graded at Tier 2.		
What are the concerns?	Who should deal with this	What is our response?
Examples include: Persistent low mood/ongoing emotional regulation difficulties/anxiety.	Pastoral team/DSL/DDSL/SENDCo/SLT.	<ul style="list-style-type: none"> ➤ Pastoral team/DSL/DDSL/SLT/SEND to contact home. ➤ Log concern on CPOMS. ➤ In school support/interventions with member of pastoral team whilst

<p>Attachment difficulties and triggered responses. Bereavement of close family member (parent/guardian/sibling). Historic abuse which causes legacy mental health distress. Self-harm. Suspected eating disorder. Risky behaviours. Questioning gender identity or sexual orientation leading to any of the above (questioning gender identity/sexual orientation itself is NOT a mental health difficulty).</p>		<p>considering or awaiting external agency support.</p> <ul style="list-style-type: none"> ➤ External agency referrals to be considered by SENDCo/SLT/Pastoral Team: Early Help/CYPMHS/counselling/young carers/Art Therapy/Anxiety Gremlin/Zones of Regulation. ➤ Consider EP referral (30 minutes free). ➤ LSA/FT to also monitor and report any concerns immediately via CPOMS.
<p>Tier 3: Personalised Support- professional referral to high level mental health concerns. Serious and possibly life-threatening incidents which require professional intervention outside of school.</p>		
What are the concerns?	Who should deal with this	What is our response?
<p>Examples include: School refusal due to persistent low mood/ongoing emotional regulation difficulties /anxiety. Diagnosed anxiety disorder or depression. Disclosure of incident of witnessed domestic abuse (physical, emotional, sexual, abuse or neglect). Sustained self-harm. Suicide ideation or attempts.</p>	<p>Report to DSL/DDSL face to face immediately and follow up by recording concerns via CPOMS.</p>	<ul style="list-style-type: none"> ➤ Direct immediate support from PSMs or SLT if a concern becomes apparent in school, removing the student to a safe place in the school building to talk to an adult; DSL/DDSL to consider appropriacy of contacting parents as soon as possible if incident occurs during the school day (not waiting until the end of the day). ➤ If a disclosure is made, staff to follow safeguarding policy. ➤ DSL/DDSL to consider consultation with social services as appropriate (Trafford First Response) ➤ Following any incident, DSL/DDSL to consider a risk assessment based on safeguarding for the suitability of the student to be in school and consider a pastoral support plan with parents/carers. ➤ SLT to consider a reduced timetable if appropriate and in agreement with parents; LA must be informed. ➤ Work in tandem with external professionals to support the student through school-based support detailed in Tier 2.

Appendix 7: Information for visitors

INFORMATION SHEET FOR VISITORS TO ALTRINCHAM COLLEGE

Welcome to Altrincham College, part of the Achieve and Learn Trust

Our mission is to provide a caring, secure environment in which each pupil will receive a quality education.

SAFEGUARDING

If you have any safeguarding concerns whilst a visitor at Altrincham College, you should alert our Designated Safeguarding Lead, Jacqui Hudson-Kirkham or the Headteacher, Andrew Keegan. This should be done as a matter of urgency, and certainly before you leave the premises. **Please ensure that you read and understand the Safeguarding Leaflet available from reception**

GENERAL

Please book in or out with Reception on arrival and departure. Please provide a copy of your DBS Disclosure and photo ID. Mrs Lisa Pearson (Cover and Exams Manager) is in charge of supply teachers and, if appropriate, will sign your supply salary claim form. A plan of the school is attached.

PROFESSIONAL CONDUCT

We expect every visitor at Altrincham College to behave in a professional manner whilst on site. It is important that any communications with our staff and students are based on respect. Foul and abusive language is not tolerated. Visitors falling short of our expectations will be escorted from the premises.

EMERGENCY PROCEDURES

Fire Alarm: a two tone siren indicating students and staff should calmly vacate the building by the nearest exit.

Assembly Points: Students - Tennis courts beside the Sports Hall

Visitors – Behind the Maths block

Supply teachers/visitors should report to Mrs Blewitt or Miss Diffley

Shelter: a one tone continuous siren indicating that students and staff should stay in the building, lock doors, close blinds and continue as normal

Close – a continual wailing siren indicating that doors should be locked or barricaded, lights, computers and all phones should be turned off. Students and staff should hide in the most non-visible part of the classroom.

SMOKING

Our school operates a smoke free policy both within and outside the school buildings. This includes cigarettes, e-cigarettes and electronic nicotine delivery devices.

PHOTOGRAPHY

Photography or recording of any kind is only allowed with authorisation of the Headteacher or Head of School

COVER TEACHERS

Your cover slip gives the times of lessons, room numbers and what subject you will be teaching. A prompt start to lessons assists discipline throughout the school so please arrive at your classroom as soon as possible. Dismissal of your class should not be before the lesson bell, **nor should children be kept behind if it results in them being late for their next lesson or late leaving school at 3.10 p.m.** Should there be a problem, please refer this to the Head of Department, Head of Year or to Beth Maher so that it can be dealt with.

We require you to take a Register every period (a paper student list will be supplied). Please tick the names of those present and send the list to the school office for each lesson.

STAFF ARE NOT PERMITTED TO USE THEIR MOBILE PHONES IN THE CLASSROOM. If you do wish to use your mobile phone on site, please make use of the staffroom located in B block.

Daily Routine

There are 5 one-hour periods a day. Period 2 stretches over 1 hour and 15 minutes, to accommodate two 20 minute breaks for all year groups (KS3 and KS4). Similarly, lunches will be managed in two 'sittings' during Period 4.

Please note there is no afternoon form-time.

All school days start at 08.45am and finish at 15.05. There is no early finish on Friday.

Registration:	08.45-09.05		
Period 1:	09.05-10.05		
Period 2:	10.05-11.25 including break time:		
	Break 1 (Y10, 11 & 12)	10.05-10.25	Period 2: 10.25-11.25
	Break 2 (Y7, 8, 9 & 13)	11.05-11.25	Period 2: 10.05-11.05
Period 3:	11.25-12.25		
Period 4:	12.25-14.05 including lunch time:		
	Lunch#1:	12.25-13.05 [Y10, 11 & 12]	Period 4: 13.05-14.05
	Lunch#2:	13.25-14.05 [Y7, 8, 9 & 13]	Period 4: 12.25-13.25
Period 5:	14.05-15.05		

Everyone who works in our school has a responsibility to make sure that all our young people are safe.

This leaflet has been given to you to ensure you understand what is expected of you. Please ask if you are not sure of anything and keep the leaflet in a safe place so that you can read it again if you need to.

If you are worried about the safety of any student in school, you must report this as soon as possible to a member of the Safeguarding Team, a member of the Pastoral Team or SLT

EMERGENCY PROCEDURES:

FIRE—Continuous two tone alarm—make your way to the assembly point located on the playground between the Maths block and the school field.

SHELTER—Single constant tone—close and lock your door, draw the blinds and continue the lesson as normal. Wait for an "All Clear" message

CLOSE—Constant wailing siren—turn off the lights and computer, lock or barricade doors and windows and hide in the most non-visible part of the room from the Headteacher.

OUR SAFEGUARDING TEAM

Miss S Duffley Trust Safeguarding Lead & DSL
Ext. 208



Mrs J Hudson-Kirkham DSL / Mental Health Lead



IT IS IMPORTANT THAT YOU WEAR YOUR IDENTITY BADGE AT ALL TIMES ON THE SCHOOL SITE

PROFESSIONAL CONDUCT—as a visitor in our school, you are expected to behave as a professional at times. Visitors who fail to behave in a manner which falls short of the expected standard will be escorted from the premises.

SMOKING: Our school operates a smoke free policy both within and outside the school buildings. This includes cigarettes, e-cigarettes and electronic nicotine delivery devices.

PHOTOGRAPHY: Photography or recording of any kind is only allowed with authorisation of the

Altrincham College
Green Lane
Timperley
Altrincham
Cheshire
WA15 8QW

Telephone: (0161) 980 7173
Headteacher: Mrs K Earle



Safeguarding and Child Protection

Advice for

- Supply agency staff
- Student teachers
- Peripatetic teachers
- Invigilators
- Visitors



WHAT ARE MY RESPONSIBILITIES?

All those who come into contact with children through their every day work, have a duty to safeguard and promote the welfare of children. In this school we have a Safeguarding Policy which is available on the school website.

CAUSE FOR CONCERN

You may become aware whilst working with a student that there are some problems at home or elsewhere that give you cause for concern.

You may notice unexplained marks or bruising, or changes in the student's behaviour or manner.

Sometimes students become withdrawn, uncommunicative or unable to concentrate; others display uncharacteristic aggressive behaviour.

They may be discussing inappropriate topics with their friends about life outside of school hours. You may hear something which raises concern about a student's safety or they may be expressing extreme views on a particular topic.

WHAT SHOULD I DO IF A CHILD DISCLOSES THEY ARE BEING HARMED?

Although the likelihood is small, it is important to know what to do in such an eventuality.

Listen to the student rather than directly question.
Never stop a child who is freely recalling.
Never agree to keep a secret
Make a record of the discussion.

Record any events up to the time of the discussion.
Do not take photographs of injuries.
Do not look at pictures or videos on the student's phone.

Tell the young person that the matter will be referred to a designated member of staff.
Reassure them that they have done the right thing in coming forward.

If you have any concerns about a student's welfare, report it at once to a member of our Safeguarding Team. Their names and contact details are overleaf

WHAT SHOULD I DO IF THE ALLEGED ABUSER IS A MEMBER OF THE SCHOOL STAFF?

You should report such allegations to the Designated Safeguarding Lead or the Headteacher.

HOW DO I ENSURE THAT MY BEHAVIOUR IS ALWAYS APPROPRIATE?

Ensure you have signed in at reception and are wearing an ID badge at all times.

Appropriate relationships with students must be based on mutual trust and respect.

Avoid being over familiar as this can be misinterpreted by a young person.

If you are working with a student on their own, always ensure that the door is left open or that you are visible to others

Never make arrangements to meet a student outside school hours without school or parental permission.

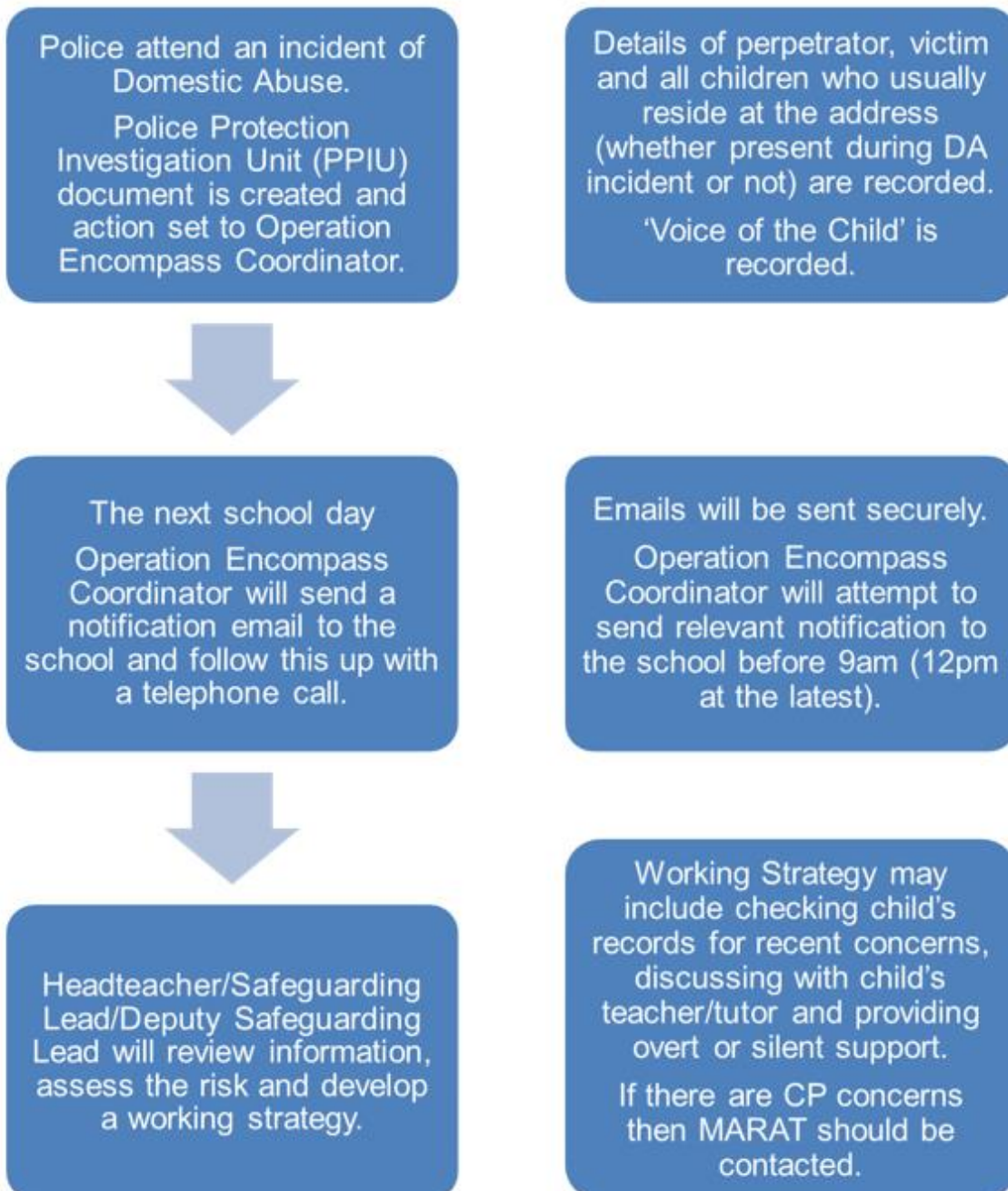
Do not exchange non-school emails, social media communication or text messages with students, or give out personal details.

Respect student's personal space when you are in class or helping them around school.

Appendix 8 – Encompass



Operation Encompass Process



Appendix 9: Glossary of Terms

Abuse	A form of maltreatment of a child. Somebody may abuse or neglect a child by inflicting harm, or by failing to act to prevent harm. Children may be abused in a family or in an institutional or community setting by those known to them or, more rarely, by others (e.g. via the internet). They may be abused by an adult or adults, or another child or children. <i>(Definition provided by Working Together 2018)</i>
Accommodation	Section 20 of the Children Act 1989 enables a local authority to provide accommodation for a child who has no person with parental responsibility for him/her, is lost or abandoned or whose parent cannot provide suitable accommodation and care.
AICSAM	Artificial Intelligence Child Sexual Abuse Material
Allocated case	A case that has been made the responsibility of a named social worker or other key worker until such time as the case is closed, transferred or managed in such other way that the named worker no longer has responsibility for it.
Assessment	The assessment of developmental needs of a child within their family and wider environmental context to determine, if the child has needs and what services they require. The assessment may be general in nature (e.g.,) CAF, Child and Family or relate to a specific developmental need (e.g. health or education.)
Bullying and Cyberbullying	Behaviour that is <ul style="list-style-type: none"> • Repeated • Intended to hurt someone either physically or emotionally • Often aimed at certain groups, eg. Because of race, religion, gender or sexual orientation
CAFA	Child and family assessment
Care order	A court order under s.31 of the Children Act 1989 placing a child in local authority care to protect the child from harm they are suffering or may suffer, whilst under the care of his/her parent (and/or being beyond a parent's control).
Child	Anyone under 18 years of age. The fact that a child has reached 16 years of age, is living independently or is in further education, is a member of the armed forces, is in hospital or in custody in the secure estate, does not change his/her status or entitlements to services or protection.
Child in need	Section 17 (10) of the Children Act 1989 defines a child in need as a child who, without the provision of local authority services: <p>a) Who is unlikely to achieve or maintain, or to have the opportunity of achieving or maintaining, a reasonable standard of health or development without the provision of services to them by a local authority</p> <p>b) Whose health or development is likely to be significantly impaired, or further impaired, without the provision for them of such services; or</p> <p>c) They are disabled, and “family”, in relation to such a child, includes any person who has parental responsibility for the child and any other person with whom they has been living.</p>
Child on Child abuse	Inappropriate behaviours between children that are abusive in nature including physical, sexual, or emotional abuse, exploitation, sexual harassment, all forms of

	bullying, coercive control, hazing/initiation rituals between children and young people, both on and offline (including that which is within intimate personal relationships).
Child protection	Part of safeguarding and promoting welfare. This refers to the activity that is undertaken to protect specific children who are suffering, or are likely to suffer, significant harm. <i>(Definition provided by Working Together 2023)</i>
Child protection enquiry	Where a local authority: <p>(a) are informed that a child who lives, or is found, in their area</p> <p style="padding-left: 40px;">(i) is the subject of a emergency protection order, or</p> <p style="padding-left: 40px;">(ii) is in police protection; and</p> <p>(b) have reasonable cause to suspect that a child who lives, or is found, in their area is suffering, or is likely to suffer, significant harm</p> <p>Section 47 of the Children Act 1989 gives children's social care a duty to make enquiries to decide whether they should take action to safeguard or promote the welfare of a child who is suffering, or likely to suffer, significant harm.</p>
CSAM	Child Sexual Abuse Material
Child Sexual Exploitation (CSE)	Child sexual exploitation is a form of child sexual abuse. It occurs where an individual or group takes advantage of an imbalance of power to coerce, manipulate or deceive a child or young person under the age of 18 into sexual activity (a) in exchange for something the victim needs or wants, and/or (b) for the financial advantage or increased status of the perpetrator or facilitator. The victim may have been sexually exploited even if the sexual activity appears consensual. Child sexual exploitation does not always involve physical contact; it can also occur through the use of technology.
Children	Anyone who has not yet reached their 18th birthday. The fact that a child has reached 16 years of age, is living independently or is in further education, is a member of the armed forces, is in hospital or in custody in the secure estate, does not change his/her status or entitlements to services or protection. <i>(Definition provided by Working Together 2023)</i>
Child and Family Assessment	An assessment conducted by a social worker which addresses the central and most important aspects of the needs of the child and the capacity of their parents to respond to these needs. It is to be undertaken where circumstances are complex and should be completed within 45 working days of referral.
CiC (Child in Care)	Child in care (previously known as LAC) refers to any child in the care of the local authority.
Children with Special Educational Needs and/or disabilities	SEN - a child or young person has SEN if they have a learning difficulty or disability which calls for special educational provision to be made for him or her.
	Disability - a physical or mental impairment which has a long-term and substantial adverse effect on their ability to carry out normal day-to-day activities.
Contextual Safeguarding	Contextual Safeguarding is an approach to understanding, and responding to, young people's experiences of significant harm beyond their families. It recognises that the different relationships that young people form in their neighbourhoods, schools and online can feature violence and abuse.
Criminal Exploitation	Involves young people under the age of 18 in exploitative situations, relationships or contexts, where they may be manipulated or coerced into committing crime on behalf of an individual or gang in return for gifts, these may include: friendship or peer acceptance, but also cigarettes, drugs, alcohol or even food and accommodation.

Disclosure and Barring Service (DBS)	<p>The Disclosure and Barring Service (DBS) helps employers make safer recruitment decisions and prevent unsuitable people from working with vulnerable groups, including children. It replaced the Criminal Records Bureau (CRB) and Independent Safeguarding Authority (ISA).</p> <p>The DBS is responsible for:</p> <ul style="list-style-type: none"> • processing requests for criminal records checks • deciding whether it is appropriate for a person to be placed on or removed from a barred list • placing or removing people from the DBS children's barred list and adults' barred list for England, Wales and Northern Ireland
Domestic Abuse	<p>Any incident or pattern of incidents of controlling, coercive, threatening behaviour, violence or abuse between those aged 16 or over who are, or have been, intimate partners or family members regardless of gender or sexuality. The abuse can encompass, but is not limited to:</p> <ul style="list-style-type: none"> • psychological • physical • sexual • financial • emotional
Duty children's social worker	Professional from the Children's Social Care team that receives and responds to all child concern referrals – in office hours.
Early Help	Intervening early and as soon as possible to tackle problems emerging for children, young people and families with a population most at risk of developing problems. Effective intervention may occur at any point in a child or young person's life.
EHA	Early Help Assessment
EHCP	Education, Health and Care Plan
Emergency duty team (EDT)	A social work team providing an out of hours social care service for Trafford.
Emergency Protection Order	A court order under Section 44 of the Children Act 1989 giving Children's Social Care and the Police the power to protect a child from harm by removing the child to suitable accommodation or preventing a child from being removed (e.g. from hospital).
Emotional Abuse	<p>The persistent emotional maltreatment of a child such as to cause severe and adverse effects on the child's emotional development. It may involve conveying to a child that they are worthless or unloved, inadequate, or valued only insofar as they meet the needs of another person.</p> <p>It may include not giving the child opportunities to express their views, deliberately silencing them or 'making fun' of what they say or how they communicate. It may feature age or developmentally inappropriate expectations being imposed on children. These may include interactions that are beyond a child's developmental capability as well as over-protection and limitation of exploration and learning, or preventing the child participating in normal social interaction. It may involve seeing or hearing the ill-treatment of another. It may involve serious bullying (including cyberbullying), causing children frequently to feel frightened or in danger, or the exploitation or corruption of children. Some level of emotional abuse is involved in all types of maltreatment of a child, although it may occur alone.</p>

Encompass	Multi agency response and information sharing related to acts of domestic violence in the home.
Enquiry checks	Checks made of agencies involved with a child for Section 47 child protection investigation purposes.
Female Genital Mutilation (FGM)	Female genital mutilation (FGM) is a procedure where the female genitals are deliberately cut, injured or changed, but where there is no medical reason for this
Gangs and Youth Violence	<p>Defining a gang is difficult, they tend to fall into three categories: peer groups, street gangs and organised crime groups. It can be common for groups of children and young people to gather together in public places to socialise, and although some peer group gatherings can lead to increased anti-social behaviour and low level youth offending, these activities should not be confused with the serious violence of a Street Gang.</p> <p>A Street Gang can be described as a relatively durable, predominantly street-based group of children who see themselves (and are seen by others) as a discernible group for whom crime and violence is integral to the group's identity.</p> <p>An organised criminal group is a group of individuals normally led by adults for whom involvement in crime is for personal gain (financial or otherwise).</p>
Gender Questioning	Replacement vocabulary for the word "trans"
Hate	<p>Hostility or prejudice based on one of the following things:</p> <ul style="list-style-type: none"> • disability • race • religion • transgender identity • sexual orientation.
Honour Based Violence (HBV)	Honour based violence is a violent crime or incident which may have been committed to protect or defend the honour of the family or community.
Impairment of health and development	Where professionals are seeking to judge whether a child's health and development have been significantly harmed, the Children Act 1989 (s31 (10)) directs them to make a comparison with the health and development which could reasonably be expected of a similar child.
INCEL	Incels are a sub-culture community of men who forge a sense of identity around their perceived inability to form sexual or romantic relationships. In recent years, there has been a small, but growing, number of violent attacks that have been attributed to individuals who identify as incels. Predicting harm among incels (involuntary celibates): the roles of mental health, ideological belief and social networking (accessible) - GOV.UK
Integrated Children's System (ICS)	Case management system for case recording within Children's Social Care. Introduced in 2008, this is a government sponsored system with national criteria for local software providers to adhere to. It ensures that there is consistency of practice across all social work teams, improves transparency and accountability.
LADO	Local Authority Designated Officer
Local Safeguarding Children Board (LSCB)	Local Safeguarding Children's Boards (LSCBs) are a statutory bodies established in each local authority area under Section 14 of the Children Act 2004. The purpose of LSCBs is:

	<p>a) to coordinate what is done by each person or body represented on the Board for the purposes of safeguarding and promoting the welfare of children in the area; and</p> <p>b) to ensure the effectiveness of what is done by each such person or body for those purposes.</p>
National Referral Mechanism (NRM)	The National Referral Mechanism (NRM) is a framework for identifying and referring potential victims of modern slavery and ensuring they receive the appropriate support. This includes children who are used as “drug mules”. More information can be found at National referral mechanism guidance: adult (England and Wales) - GOV.UK
Nominated safeguarding children adviser	The person/people in each agency who has/have responsibility for child protection issues in that agency and provide child protection advice to frontline professionals / clinicians, e.g. child protection lead in schools, designated and named doctors and nurses etc.
Neglect	<p>Neglect is the persistent failure to meet a child’s basic physical and/or psychological needs, likely to result in the serious impairment of the child’s health or development. Neglect may occur during pregnancy as a result of maternal substance abuse. Once a child is born, neglect may involve a parent or carer failing to:</p> <ul style="list-style-type: none"> • Protect a child from physical and emotional harm or danger. • Ensure adequate supervision (including the use of inadequate care-givers). • Ensure access to appropriate medical care or treatment. <p>• It may also include neglect of, or unresponsiveness to, a child’s basic emotional needs.</p>
Parent	Parent or carer of a child.
Parental Conflict	Some level of conflict between parents is often a normal part of everyday life. It becomes a safeguarding concern when the conflict is frequent, intense, poorly resolved or damaging. This can include unresolved arguing, silence, Lack of respect or Lack of resolution. This conflict can affect children in all types of parental relationships
Parental Responsibility	All the duties, rights, powers, responsibilities and authority which by law a parent of a child has in relation to the child and their property. A Care Order confers the responsibility to a local authority but it does not remove it from the child's parents.
Peer on Peer Abuse	Archaic Term - Peer on peer abuse occurs when a young person is exploited, bullied and / or harmed by their peers who are the same or similar age; everyone directly involved in peer on peer abuse is under the age of 18. Now known as Child on Child abuse.
Police Powers of Protection (Section 46) (PPO)	Section 46 of the Children Act 1989 giving the police powers to protect a child from harm by removing the child to suitable accommodation or preventing a child from being removed (e.g. from hospital).
Physical Abuse	A form of abuse which may involve hitting, shaking, throwing, poisoning, burning or scalding, drowning, suffocating or otherwise causing physical harm to a child. Physical harm may also be caused when a parent or carer fabricates the symptoms of, or deliberately induces, illness in a child.
Private Fostering	A private fostering arrangement is one that is made privately (without the involvement of a local authority) for the care of a child under the age of 16 years (under 18, if disabled) by someone other than a parent or close relative, in their own home, with the intention that it should last for 28 days or more. (Close family relative is defined as a ‘grandparent, brother, sister, uncle or aunt’ and includes

	half-siblings and step-parents; it does not include great-aunts or uncles, great grandparents or cousins.)
Radicalisation and Extremism	Radicalisation refers to the process by which a person comes to support terrorism and forms of extremism leading to terrorism. Extremism is vocal or active opposition to fundamental British values, including democracy, the rule of law, individual liberty and mutual respect and tolerance of different faiths and beliefs. We also include in our definition of extremism calls for the death of members of our armed forces, whether in this country or overseas.
Referral	A request for services to be provided by a local authority. A case can become current only after a referral has been made.
Regulated Activity with Children	The Safeguarding Vulnerable Groups Act 2006 (as amended by the Protection of Freedoms Act 2012) defined Regulated Activity with Children as: a) Unsupervised activities - Teaching, training or instruction, care for or supervise children, provide advice / guidance on wellbeing, drive a vehicle only for children b) Work for a Limited Range of Establishments (Specified pLaces) – Where there is an opportunity for contact, for example schools, children's homes, childcare premises (but not work by supervised volunteers) c) Healthcare / Relevant Personal Care - for example washing or dressing; or health care by or supervised by a professional, even if done once d) Registered Child-minding and Foster-Carers
Relationship Abuse	Teen relationship abuse consists of the same patterns of coercive and controlling behaviour as domestic abuse. These patterns might include some or all of the following: sexual abuse, physical abuse, financial abuse, emotional abuse and psychological abuse.
Risk to child	Description of an adult or child who has been identified (by probation services / Youth Justice Service, Police or health services, individually or via the Multi-Agency Public Protection Arrangements) as posing an on-going risk to a child (repLaces the term Schedule 1 Offender).
SARF	Single Agency Assessment Form
Safeguarding and promoting the welfare of children	Defined for the purposes of this guidance as: <ul style="list-style-type: none"> • protecting children from maltreatment; • preventing impairment of children's health or development; • ensuring that children are growing up in circumstances consistent with the provision of safe and effective care; and • taking action to enable all children to have the best life chances. <i>(Definition provided by Working Together 2023)</i>
Section 17	Section 17 of the Children's Act 1989 imposes on every local authority a duty to safeguard and promote the welfare of children in the area who are in need.
Section 47 Enquiry	Section 47 of the Children Act requires every local authority to make enquiries about children thought to be at risk, enabling them to decide whether they need to take further action to safeguard and promote the child's welfare.
Senior Manager	Manager in any agency above first line manager.
Serious Case Review	SCRs are undertaken when: (a) abuse or neglect of a child is known or suspected; and (b) either —

	<p>(i) the child has died; or</p> <p>(ii) the child has been seriously harmed and there is cause for concern as to the way in which the authority, their Board partners or other relevant persons have worked together to safeguard the child.</p>
Sexting	<p>Sexting is when someone shares sexual, naked or semi-naked images or videos of themselves or others, or sends sexually explicit messages.</p> <p>They can be sent using mobiles, tablets, smartphones, and laptops - any device that allows you to share media and messages.</p>
Sextortion	<p>'Sextortion' is a type of online blackmail. Criminals threaten to share sexual pictures, videos, or information about a person unless they pay money or do something else they don't want to. Anyone can be a victim of sextortion. However, young people aged between 15 to 17, and adults aged under 30, are often most at risk.</p>
Sexual Abuse	<p>Involves forcing or enticing a child or young person to take part in sexual activities, not necessarily involving a high level of violence, whether or not the child is aware of what is happening. The activities may involve physical contact, including assault by penetration (for example rape or oral sex) or non-penetrative acts such as masturbation, kissing, rubbing and touching outside of clothing.</p> <p>They may also include non-contact activities, such as involving children in looking at, or in the production of, sexual images, watching sexual activities, encouraging children to behave in sexually inappropriate ways, or grooming a child in preparation for abuse (including via the Internet). Sexual abuse is not solely perpetrated by adult males. Women can also commit acts of sexual abuse, as can other children.</p>
Sexual Harassment	<p>Sexual violence and sexual harassment can occur between two children of any age and sex from primary through to secondary stage and into colleges. It can occur through a group of children sexually assaulting or sexually harassing a single child or group of children. Sexual violence and sexual harassment exist on a continuum and may overlap; they can occur online and face to face (both physically and verbally) and are never acceptable. Sexual harassment means 'unwanted conduct of a sexual nature' that can occur online and offline and both inside and outside of school/college. Sexual harassment is likely to: violate a child's dignity, and/or make them feel intimidated, degraded or humiliated and/or create a hostile, offensive or sexualised environment.</p>
Sexual Violence	<p>Sexual violence and sexual harassment can occur between two children of any age and sex from primary through to secondary stage and into colleges. It can occur through a group of children sexually assaulting or sexually harassing a single child or group of children. Sexual violence and sexual harassment exist on a continuum and may overlap; they can occur online and face to face (both physically and verbally) and are never acceptable. Sexual violence can include;</p> <p>Rape: A person (A) commits an offence of rape if: he intentionally penetrates the vagina, anus or mouth of another person (B) with his penis, B does not consent to the penetration and A does not reasonably believe that B consents. Assault by Penetration: A person (A) commits an offence if: s/he intentionally penetrates the vagina or anus of another person (B) with a part of her/his body or anything else, the penetration is sexual, B does not consent to the penetration and A does not reasonably believe that B consents. Sexual Assault: A person (A) commits an</p>

	<p>offence of sexual assault if: s/he intentionally touches another person (B), the touching is sexual, B does not consent to the touching and A does not reasonably believe that B consents. (Schools should be aware that sexual assault covers a very wide range of behaviour so a single act of kissing someone without consent or touching someone's bottom/breasts/genitalia without consent, can still constitute sexual assault.)</p> <p>Causing someone to engage in sexual activity without consent: A person (A) commits an offence if: s/he intentionally causes another person (B) to engage in an activity, the activity is sexual, B does not consent to engaging in the activity, and A does not reasonably believe that B consents. (This could include forcing someone to strip, touch themselves sexually, or to engage in sexual activity with a third party.)</p>
Social Worker or Child's Social Worker	Social work qualified professional with case responsibility.
Staff / staff member	Any individual/s working in a voluntary, employed, professional or unqualified capacity, including foster carers and approved adopters.
Trafficking	Trafficking in persons means the recruitment, transportation, transfer, harbouring or receipt of persons, by means of the threat or use of force or other forms of coercion, of abduction, of fraud, of deception, of abuse of power or of a position of vulnerability or of the giving or receiving of payments or benefits to achieve the consent of a person having control of another person, for the purpose of exploitation. Exploitation shall include, at a minimum, the exploitation of the prostitution of others or other forms of sexual exploitation, forced labour or services, slavery or practices similar to slavery, servitude or removal of organs.
TRAFFORD FIRST RESPONSE	Trafford's Multi Agency Referral and Assessment Team
TSCB	Trafford Safeguarding Children's Board
Upskirting	The act of placing equipment such as a camera or mobile phone beneath a person's clothing to take a voyeuristic photograph without their permission
VAWG	Violence against women and girls. It encompasses a range of harmful acts, including physical, sexual, and emotional abuse, that disproportionately affect women and girls. VAWG is recognized as both a form of discrimination and a violation of human rights.
Working Together	Working Together to Safeguard Children (2023) is a guidance document produced by the DFE setting out how all agencies and professionals should work together to safeguard children and promote children's welfare.