

Key Stage 4 Curriculum and Option Choices Booklet

2022-2023

A guide for students, parents and carers



Labour Market Information

*LMI obtained from the Office for National Statistics and Gov.uk. Poster last updated August 2020

** Data used in this poster covers the period April - June 2020 and includes furloughed workers

**National
Careers
Service**

Greater Manchester LEP

Wigan, Bolton, Bury, Salford, Rochdale, Oldham, Tameside, Trafford, Manchester & Stockport



Employment

UK - 76.4%
LEP - 72.7%



Unemployment

UK - 3.9%
LEP - 5.1%

16-64 year old population = 1,790,400
Total population = 2,812,600

Full-Time Salary



UK Average - £30,414
LEP Average - £28,402

Self-Employment



185,800 people in the region are self-employed

Apprenticeships

There are approximately 1,460 live vacancies within a 40 mile radius of Manchester, including...

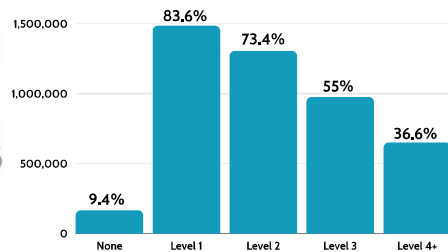
- UX Developer
- Business and Administration
- Project Management
- I.T/Software Testing
- Civil Engineering
- Hair and Beauty
- Finance and Insurance
- Rail Engineer
- Teaching Assistant
- Vehicle Maintenance & Repair

Plus many more! Find local opportunities on www.apprenticeships.gov.uk/



Qualification levels

1,306,500 people have at least a level 2 qualification such as GCSEs or an NVQ.



Where do people work right now?

Most jobs

- Wholesale & Retail - 224,000 (16.8%)
- Health & Social Care - 159,000 (11.9%)
- Administration - 142,000 (10.7%)
- Science & Technology - 121,000 (9.1%)
- Education - 114,000 (8.6%)

Fewest jobs

- Arts & Entertainment - 29,000 (2.2%)
- Real Estate - 23,000 (1.7%)
- Electricity, Gas & Air - 12,000 (0.9%)
- Water, Sewerage & Waste - 7,000 (0.5%)
- Mining, Quarrying & Utilities - 350 (0.02%)

Growth Sectors

- I.T and Cyber Security
- Health and Social Care
- Energy
- Professional Services
- Industrial biotechnology

There are many other sectors that will grow in your region

What are some of the region's big name employers?



Need careers advice? Call us on 0800 100 900, contact us [online](#), or find us on Facebook, Twitter and The Student Room.

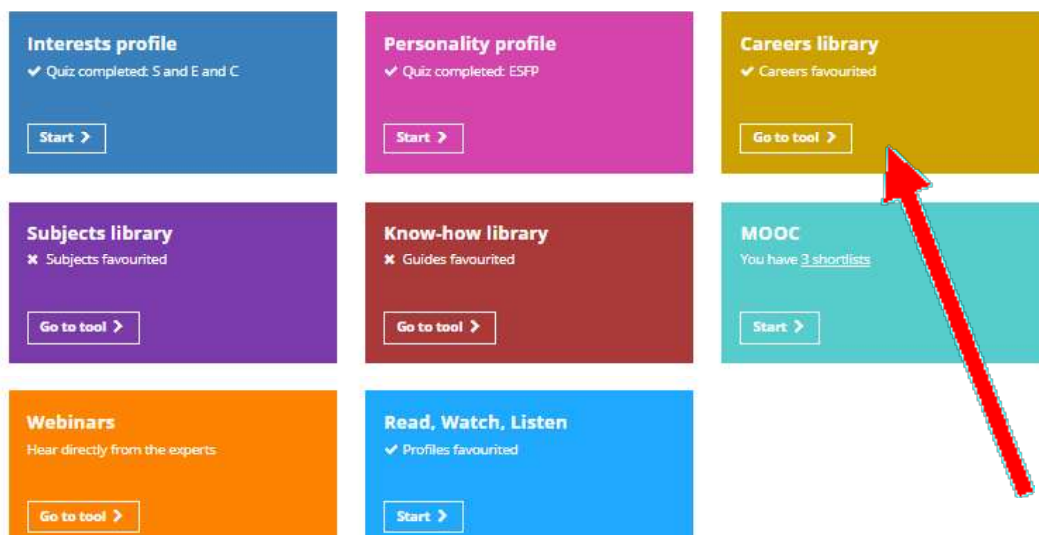
There are a large range of useful career exploration links to support decision making on our web-site. Also, a useful LMI for all tool appears at the bottom of the page (if you allow cookies) where you can compare the average salary and growth of that career in the UK to others:
<https://www.altrinchamcollege.com/careers/websites>.

UK Average		Type to start searching
Weekly Pay £505	Annual Pay £26,260	Q e.g actor
Hours/Week 37.5h	Hourly Pay £13	
Workforce Change (projected)		
Growth 6%	Replacement 39.5%	
The workforce is projected to grow by 6% over the period to 2024, creating 1,874,000 jobs in the same period. 39.5% of the workforce is projected to retire, creating 13,110,000 job openings.		
This is the average combined for all industries across the UK. The pay and hours are that of an average full-time employee in this job, including bonuses, before tax and deductions.		
Clear card		

Powered by LMI For All

unifrog

Don't forget as a school we use Unifrog. This is the complete online destinations platform, a 'one-stop-shop' for students across KS3, KS4 and KS5, no matter what their interests or academic ability. Explore Unifrog with your child/ward: <https://www.unifrog.org/sign-in>. Students can log in using their school email address e.g. username@altrinchamcollege.com.



Ways to use Unifrog: complete the interest and personality profile quizzes and use these results to search for a career/job based on your interests/personality/favourite subjects. Read the career profile and then scroll down to view UK entry requirements and Labour Market Information (LMI).

Is the demand for this job likely to increase or decrease?



Investment banker

Labour Market Information (LMI)

UK Current Jobs

Business, finance and related associate professionals (SOC3)
UK jobs: 520,768
Trafalgar jobs: 2,568 (72nd of 214 UK LEAs)
Top 5 LEAs: Essex (19,902), Surrey (16,427), Kent (14,496), Hertfordshire (13,841), Hampshire (13,780)

UK Prospects

Business and public service associate professionals (SOC2)
UK growth: +11.9% from 2017 to 2027, creating 34,000 jobs

UK Salary

Finance and investment analysts, advisers (SOC4)
UK annual median: £36,159

Business, finance and related associate professionals (SOC3)
North West annual median: £30,04
Top 3 regions: London (£44,652), E. (£35,059), South East (£35,000)

What is SOC?

Standard Occupational Classification (SOC) is the government's official method of sorting jobs into categories. SOC4 sorts all jobs into 370 different categories, and SOC2 has 25.

UK Average	
Weekly Pay £505	Annual Pay £26,260
Hours/Week 37.5h	Hourly Pay £13
Workforce Change (projected)	
Growth 6%	Replacement 39.5%
<small>The workforce is projected to grow by 6% over period to 2024, creating 1,974,000 jobs. In the same period, 36.5% of the workforce is projected to retire, creating 13,110,000 job openings.</small>	
<small>This is the average combined for all industries across the UK. The pay and hours are that of an average full time employee in this job, including bonuses, before tax and deductions.</small>	
Clear card	

Useful career information can be found here: <https://www.altrinchamcollege.com/careers>

MESSAGE FROM THE HEADTEACHER	4
MESSAGE FROM HEAD OF YEAR 9	5
HOW TO USE THIS BOOKLET	6
IMPORTANT DATES	7
GCSE COURSES	8
VOCATIONAL COURSES	9
CORE SUBJECTS	10
OPTIONS SUBJECTS: BLOCKS	11
Core Subjects:	
ENGLISH LANGUAGE / LITERATURE	12
MATHEMATICS	13
SCIENCES (Combined and 'Triple')	14
PSHCE/RSE	15
CORE PE	16
Optional Subjects:	
ART AND DESIGN	18
ART TEXTILES	19
BUSINESS STUDIES	20
COMPUTER SCIENCE	21
CREATIVE iMEDIA	22
DRAMA	23
FOOD PREPARATION AND NUTRITION	24
GEOGRAPHY	25
HISTORY	26
MEDIA STUDIES	27
MUSIC	28
MUSIC TECHNOLOGY	29
PHYSICAL EDUCATION (P.E.)	30
RELIGIOUS STUDIES	31
SPANISH	32
T-Levels	33

MESSAGE FROM THE HEADTEACHER

Dear Students,

Choosing which subjects you go on to study at KS4 is a really exciting process but it can be difficult to make such big decisions! The best way to think about it is to try to focus on what you enjoy studying; this will probably inform what you go on to do later in life.

Many jobs which you may go on to do, don't exist yet! Therefore it's a good idea to choose a broad range of subjects and then get absolutely the best grade you can! Listen out for information about the Ebacc (English Baccalaureate), vocational and non-vocational subjects. You will hear a lot more about these as time goes on.

It is vitally important that over the next few weeks you can speak with subject staff so you have a clear picture of what subjects are on offer, what the course will entail and indeed, the whole options process.

Whilst this booklet is all about option choices, I do need to stress that you will only make a success of your studies if you are in school, on time, dressed correctly and ready to learn. For every 10% of school missed, you will drop a GCSE grade, whether that's through absence or poor behaviour. Having to constantly 'catch up' with lessons and missed work will have a detrimental impact on your grades - and you!

Making option choices requires you to have a mature outlook, to be future-focussed and to take responsibility for your own learning. If you do all of these things I can guarantee you will do yourselves proud!

The information contained in this booklet is accurate on publication but may change in the forthcoming months. We will notify you of any changes.

The virtual Parent/Carer Information Evening will take place on **Tuesday 8 March**, via School Cloud. And an optional Q&A session (via MS Teams) is scheduled for *Thursday 10 March, 6.30-7pm (see page 7 for more details)*.

- The majority of GCSE examinations are now 100% assessed by examinations at the end of the two-year course.

- Performing well in an examination setting is an important aspect of many courses, alongside mock examinations in Years 10 and 11.

- Controlled assessments remain an ongoing part of some examination courses. You will receive information showing deadline dates for controlled assessments and this will help you plan and use your time effectively. KS3 will have prepared you for this in many ways.

- The school will pay all your examination fees on condition that you attend lessons regularly, keep up to date with work, complete all home learning and ensure all assignments are ready for marking at the time of entry.

Your parents/carers will be liable for fees if these conditions are not met and also if you fail to attend for the final examination, or any part of it.

The staff here want you to achieve the very best standards and are prepared to work hard with, and for, you. They will offer constant guidance and support. Your parents/carers can greatly influence the standard of your work by regular monitoring and insistence that schoolwork has priority over any other commitment.

The next two years are very important but are also fulfilling and enjoyable. Start with enthusiasm and determination, and maintain this throughout your courses. Keep your eyes on the future - great exam results are the stepping stones to the next stage of your lives.

Remember that entry into the Sixth Form will be based on you achieving the minimum entry criteria in order to enrol on A-Level courses and other Level 3 vocational courses, in addition to displaying a positive attitude to learning, and outstanding attendance and punctuality.

I wish you every success as you begin this new phase of your school career and assure you that I will personally take a great interest in your progress and development at all times.

Ms K Earle
Headteacher

Dear Student,

This is a really exciting time for you in your education; it's the first time that you have the opportunity to choose those subjects which interest you and map out your own curriculum at Key Stage 4. We have designed the options to ensure that you have a good range of subjects from which to choose, which will enable you to fully experience a broad and interesting education.

To ensure that you are well prepared for any university degree course or career you might want to pursue, the following subjects are still compulsory: English, Maths, Science, PE and PSHRE. You will still be able to participate in sports and experience enrichment activities, so you will have lots of variety and challenge in your learning.

In order to help you make these important decisions, consider the following:

TIME: allocate enough time to read and talk about each subject that interests you.

IMPORTANT NOTES: make notes when you speak to trusted adults or read useful information. This will help you to remember any important points when making a decision.

PLAN: knowing what degree course or career you are interested in pursuing can help you choose GCSEs which will support you on this path.

Best wishes,

Mrs Hardy, Head of Year 9

GOOD REASONS TO PICK A SUBJECT

- ✓ I enjoy it.
- ✓ I am good at it.
- ✓ It is relevant to the degree or career that interests me.
- ✓ I would like a new experience.
- ✓ I am not really sure about what to do in the future; this subject will help me to keep my options open.
- ✓ It is a challenging subject, and I like a challenge.
- ✓ It is a subject I would like to improve in.
- ✓ I am ready to work hard to improve.

REASONS NOT TO PICK A SUBJECT

- ✗ I like the teacher: they might not be your teacher for GCSE. You are more likely to be successful if you have a positive relationship with **all** of your teachers.
- ✗ My friends are doing it: you may be placed in a different class. You might not enjoy the subject, and could lose motivation to revise and work hard. Studying something you like will help you to get to know people who have similar interests.
- ✗ It sounds easy: no GCSE is easy!

HOW TO USE THIS BOOKLET

Read the booklet

- Consider the options on offer.
- You will study English, Mathematics, Science, PE, RE and PSHCEE, including Careers Education.
- The study of up to four options will then lead to eight or nine GCSE passes or equivalent.
- Think about your strengths and how the subjects on offer will match these.

Be prepared

- Make use of the presentations from Heads of Department (available on MS Teams), along with the introduction from Mr Eastwood.
- With your parents/carers, attend the Options Information Evening (via School Cloud) on **Tuesday 8 March**.
- If you, or your parents/carers, still have queries after the Information Evening, join our online Q&A session on **Thursday 10 March** (via MS Teams), 5.30-7.00pm.
- Read your latest report carefully to see how well you are doing in the subjects which interest you the most.

Discuss your ideas with family and staff

- Your Form Teacher: They know you and can find out information for you.
- Your Head of Year Team: Mrs Hardy and Mrs Scholes can discuss any aspect of your choices with you.
- Our Connexions Careers Advisors: Mr Lovatt and Mr Plaitor can help with careers information.
- Heads of Department and Class Teachers: will help with subject specific information.

Fill in the options form online

- Complete the form **ONLINE** no later than **MONDAY 14 MARCH 2022**.

Options process

- The school will consider your preferences and may wish to discuss these with you.
- Your choices will be circulated to subject staff to confirm that they feel you have the right balance of subjects.
- Written confirmation will follow later in the Summer Term.

Before deciding, think about the following:

A few students may benefit from taking fewer GCSEs and supplementing the curriculum with more vocationally based courses. Guidance will be given where this route is seen as more appropriate but still challenging for individual students.

Remember that selecting a subject because your friend is doing it is not a good idea; you will have plenty of time to see your friends during the day. Choose the subjects you are good at and enjoy, that way you will leave with the best possible set of results based on YOUR ability and interests.

Whatever you decide, you will have to work hard to achieve the best results. Work missed must be copied up to ensure you have all the information required. You must maintain excellent attendance and punctuality throughout the two year course and school work must take priority over anything else.

Important Information:

WEDNESDAY 2 MARCH 2022

- **INTRODUCTORY PRESENTATION AND OPTIONS BOOKLET AVAILABLE TO VIEW / DOWNLOAD (MS TEAMS 'INTAKE 2019')**
- **PRESENTATIONS FROM HEADS OF DEPARTMENT AVAILABLE**
- **ONLINE OPTIONS FORM AVAILABLE TO COMPLETE**

TUESDAY 8 MARCH 2022

4.00-7.00: PARENTS/CARERS' INFORMATION EVENING (SCHOOL CLOUD)

THURSDAY 10 MARCH 2022

5.30-7.00^{pm} OPTIONS Q&A EVENT (MS TEAMS) - THIS IS AN OPTIONAL EVENT, FOR THOSE STUDENTS/PARENTS/CARERS WISH TO CLARIFY ANYTHING

MONDAY 14 MARCH 2022

DEADLINE FOR COMPLETED OPTIONS FORMS TO BE SUBMITTED (ONLINE)

Finally...

A polite reminder that no holidays are authorised during term time.

Key assessments, mock examinations and coursework take place throughout the two year course, therefore any significant time away from school is likely to negatively impact on your final GCSE grades.

HOW WILL GRADES BE AWARDED?

The aim is to assess a broad range of work for each student, including end of course examinations and controlled assessments, taken at different points within the two year course. The new GCSEs place much greater emphasis on end of course examinations.

I) END OF COURSE EXAMINATION

Virtually all examinations will be taken at the end of Year 11 and will consist of one or more papers. In a very small number of subjects, you may be entered for exams during Year 10. In some subjects, there may also be practical or speaking tests.

II) CONTROLLED ASSESSMENT

In some subjects, the work students complete in Years 10 and 11 will be assessed by a variety of means and these assessments will constitute a percentage of the marks for the overall GCSE grade.

In some subjects, there will be regular tests on particular units of work. In others, students may have written assignments or projects to complete. It is therefore essential that students apply themselves in an organised and consistent manner *throughout the two years of the course*, which includes maintaining an excellent attendance record.

Students will be assisted in developing important independent study skills, which can boost their performance in controlled assessments and examinations.

HOW DOES THE EXAMINATION CATER FOR STUDENTS OF DIFFERING ABILITIES?

The aim of the examinations is to encourage all students to demonstrate the level of work of which they are capable. Differing abilities will be reflected in the quality of the course-work or controlled assessments completed by a student but the main method of indicating a student's ability will be through the final examinations.

In some subjects, the examination papers will contain questions of increasing difficulty in order to adequately test even the most able student. In other subjects, candidates are entered for specific papers aimed at achieving grades within a given range, suited to their proven ability (this practice is termed 'tiering' by the examination boards). Please be aware that teachers may make decisions regarding entry into examinations fairly late in a course where tiering applies.

BTEC / CAMBRIDGE NATIONAL / NCFE / OCR

Vocational qualifications/technical awards are suitable for a wide range of students and learning styles. They encourage and recognise achievement in those who benefit from studying courses linked generally, or specifically, to occupational areas.

Each vocational course is made up of a number of units. Each unit is graded 'pass', 'merit' or 'distinction', according to how the student has performed against a set of criteria. Students must achieve at least a 'pass' in ALL the units in order to achieve the qualification at the end of the course.

Students who achieve a Level 2 pass, merit or distinction will gain a qualification equivalent to a grade 9 - 4 at GCSE. Assessment will be mainly through ongoing controlled assignments, with an examination at some point in the course accounting for up to 40% of the final grade.

Vocational/technical courses provide students with the opportunity to develop a wide range of skills for progression into either Further Education or the workplace. Courses are based in a vocational context and although many skills are subject-related, others are general work-related skills including communication and working as part of a team.

This type of qualification is widely acknowledged and recognised by local colleges, Sixth Forms (including Altrincham College Sixth Form), Universities and employers in all major industry sectors.

All students continue to study the following subjects until the end of Year 11:

ENGLISH LANGUAGE

ENGLISH LITERATURE

MATHEMATICS

SCIENCE

**PSHCE (Personal, Social, Health, Citizenship & Economic education)
including RSE (Relationships & Sex Education) and R.E..**

CORE PE

OPTION SUBJECTS

Option subjects are divided into blocks; students can only choose one option from each block:

Block 1

1. Art & Design
2. Geography
3. History
4. Music Technology
5. Spanish
6. Separate ('Triple') Sciences

Block 2

1. Art Textiles
2. Business Studies
3. Computer Science
4. Media Studies
5. Geography
6. History
7. Spanish

Block 3

1. Business Studies
2. Creative iMedia
3. Drama
4. Food Preparation and Nutrition
5. Geography
6. Music
7. P.E.

Block 4

1. Art & Design
2. Art Textiles
3. Media Studies
4. Drama
5. Food Preparation and Nutrition
6. R.E.
7. Spanish

For more information and advice on options, please visit the 'Intake 2019' tile on MS Teams and attend the Parent/Carer Information Evening on 8 March.

GCSE ENGLISH

ALL STUDENTS WILL BE ENTERED FOR BOTH ENGLISH LANGUAGE AND ENGLISH LITERATURE

Exam Board AQA - English Language

Subject Overview

This course should encourage students to develop their knowledge and skills in reading, writing and critical thinking. Through a range of texts, students develop culturally and acquire knowledge of the world around them. Studying GCSE English Language should encourage students to read widely for pleasure and question information presented to them from media and literary sources. This is an excellent course for the preparation of studying English Language at a higher level and to be able to access future academic and career options.

Assessment

The **English Language** course comprises two exam papers, each 1 hr and 45 mins long and worth 50% of the total grade. Both have a reading and writing element plus a speaking and listening element. The speaking and listening is compulsory and assessed, but not counted towards the final grade. Our approach to spoken language will emphasise the importance of the wider benefits of these skills. Students will deliver a presentation on a topic of their choice and then discuss this in more detail, responding to questions.

Paper 1: Explorations in creative reading and writing looks at how writers use narrative and descriptive techniques to engage the interest of readers. There are four reading questions to answer on one text. Students will then demonstrate their understanding of this topic through a piece of extended writing.

Paper 2: Writers' viewpoints and perspectives looks at how different writers present a similar topic over time. In Section A students will answer four reading questions on two linked sources from different time periods and genres, in order to consider how each presents a perspective or viewpoint to influence the reader. In Section B, students will be asked to produce a written text in which they give their own perspective on the theme introduced to them in Section A.

Exam Board AQA - English Literature

Subject Overview

This course should encourage students to develop their knowledge and skills in reading, writing and critical thinking. Through literature, students have the chance to develop culturally and acquire knowledge of the best that has been thought and written. Studying GCSE English Literature should encourage students to read widely for pleasure, and as a preparation for studying literature at a higher level.

Assessment

The **English Literature** course will also comprise of two examination papers, one worth 40% and the other 60% of the overall grade.

Paper 1 (worth 40%) will test students' understanding of a 19th century novel and a Shakespeare play, which they will have studied in class. They will have to answer one essay question on each of the two texts for this paper.

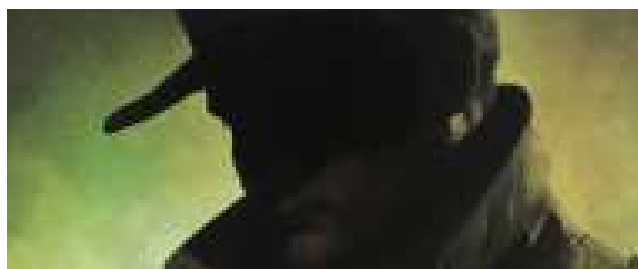
Paper 2 (worth 60%) will test students' ability to analyse a modern novel or play and a range of poetry, some seen and some unseen.

Career Opportunities

Proficiency in English is a key skill that is transferable to all subjects and is essential in the work place. All jobs require sound English skills but the following careers make particular use of English:

Proofreading	Journalism	Teaching
Legal Profession	Broadcasting	Copy-writing
Interpreting	Publishing	Library Work
Public Relations	Administration	
Theatre Directing	Marketing	TV & Media

Head of Department:
Mrs Beatty (nby@altrinchamcollege.com)



GCSE MATHEMATICS

Exam Board
AQA

Head of Department:
Miss Whitworth
(lwh@altrinchamcollege.com)

Subject Overview

GCSE Mathematics covers a wide range of mathematical knowledge and skills, grouped into five areas:

- Number
- Algebra
- Ratio and Proportion
- Geometry and Measures
- Statistics and Probability

All of these areas may be combined to assess problem solving and functional skills

WHY DO I HAVE TO TAKE GCSE MATHS?

To develop specific knowledge and strategies to apply to problems, ensuring that you are inspired to reach your maximum potential at GCSE. To ensure you are confident using the maths needed for Further Education, careers and every day life.

It is a compulsory subject for all students under the National Curriculum.

GCSE Mathematics is an entry requirement for most college courses and jobs.



Assessment

- Students will follow a traditional linear course with three final examinations.
- The three exams will consist of a

non-calculator paper (1hr 30mins) and two calculator papers (1hr 30mins each).

- It is very important that you possess a scientific calculator as regular home learning will be set requiring its use, as well as being required in school.

All students will be entered for their GCSE at the end of Year 11 after two years of study.

There may also be the opportunity for some students in the top set to study Further Maths during Year 11, which will help them

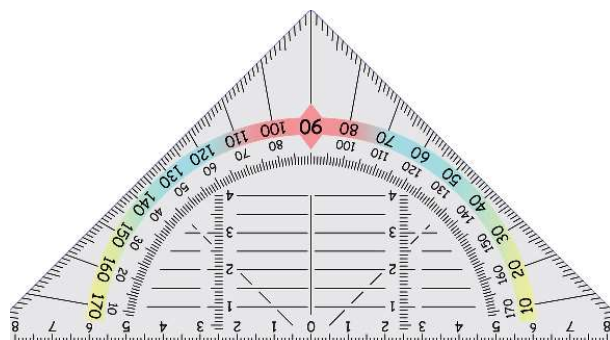


prepare them for A-Level Mathematics.

Career Opportunities

Almost all jobs require some Mathematics but the following careers / courses make particular use of Maths skills:

Economics	Medicine
Engineering	Architecture
Accounting	Computing
ICT	Banking
Insurance	Teaching
Marketing	Pharmacy



GCSE SCIENCES

Exam Board
Edexcel

Head of Department:
Ms Brickland
(sbd1@altrinchamcollege.com)

Subject Overview

As a minimum, all students will follow the Combined Science course (resulting in two GCSEs). The course will cover key aspects of Biology, Chemistry and Physics.

Students who have demonstrated an aptitude for Science during KS3 may opt for separate ('Triple') Science and complete separate GCSEs in Biology, Chemistry and Physics.

PRINCIPLE SCIENCE TOPICS:

- **BIOLOGY:** health, the circulatory system, nerves and hormones, adaptation, energy in food chains, genetic variation, evolution, plants.
- **CHEMISTRY:** atoms, the periodic table, chemical reactions, bonding, extracting metals, crude oil and fuels, polymers, earth and atmosphere science.
- **PHYSICS:** energy transfer, generating electricity, properties and uses of waves, forces and their effects, radioactivity.

Students will also study additional topics in all three subjects.

WORKING SCIENTIFICALLY:

Students will develop practical skills and knowledge and an understanding of working scientifically through the completion of 18 compulsory core practical tasks. Students of the separate sciences will complete 8 compulsory core practical tasks in *each* of the GCSEs.

There will also be many other additional opportunities to undertake practical work during the course, which will enable science students to gain a thorough understanding of the subject content.

Due to the demands of external assessment and compulsory practical activities, students

need a positive attitude to learning along with excellent attendance to succeed at GCSE.

Assessment

COMBINED SCIENCE: two exams (each 1 hour, 10 minutes) will be taken in each of the three sciences. Each subject (Biology, Chemistry, Physics) carries equal weighting in the final grade awarded. Papers will be available at Foundation Tier (grades 1-5) and Higher Tier (grades 4-9) with the same tier of entry applying to all of the examinations.

SEPARATE SCIENCES: two exams (each 1 hour 45 minutes) will be taken in each of the three subjects.

Assessment will involve multiple-choice questions, short answer questions, calculations and extended open-response questions.

PRACTICAL SKILLS WILL BE ASSESSED THROUGH THE WRITTEN EXAMINATIONS (15% OF TOTAL MARKS).

Career Opportunities

GCSE Science qualifications are highly valued by employers and are of particular importance for a wide variety of academic and vocational college courses.

Career opportunities with Science include:

Teaching	Chemical engineering
Cosmetic science	Medical lab science
Dentistry	Pharmacology
Ophthalmics	Forensic science
Physiotherapy	Radiography
Sports science	Nursing/Midwifery
Dietetics	Medicine
Veterinary science	



Key Stage 4 CORE PE

CERTIFICATE OF ACHIEVEMENT

Subject Overview

Students will study a variety of major sports and a number of recreational activities; these will change for each block of work undertaken.

STUDENTS ARE EXPECTED TO ACHIEVE HIGH STANDARDS OF PERFORMANCE, UNDERSTANDING AND EVALUATION IN:

Games, including:

Football	Basketball
Netball	Rugby
Handball	Badminton
Table Tennis	Hockey
Volleyball	

Fitness activities, including:

Weight training	Circuit training
Dance	Rock climbing
Trampolining	

In the Summer block you will take part in summer sports which will include:

Cricket	Rounders
Softball	Tennis
Athletics	

Students will also experience a wide range of recreational activities. These are designed to encourage students to try new sports and activities and to gain a life-long commitment to sport and physical activity.

Recreational sports/activities will include:
Fitness activities (e.g. dodgeball, aerobics)
Cheer-leading
Five-a-side Football

Please be aware that some activities may require a voluntary financial contribution in order to run.



Head of Department:
Mr Dennis (ads@altrinchamcollege.com)

ART AND DESIGN

ART TEXTILES

BUSINESS STUDIES

COMPUTER SCIENCE

CREATIVE iMEDIA

DRAMA

FOOD PREPARATION AND NUTRITION

GEOGRAPHY

HISTORY

MEDIA STUDIES

MUSIC

MUSIC TECHNOLOGY

PHYSICAL EDUCATION (P.E.)

RELIGIOUS STUDIES

SPANISH

GCSE ART AND DESIGN

Exam Board

Eduqas

Head of Department:

Mr Miranda (rma@altrinchamcollege.com)

Subject Overview

The Art & Design course is very exciting, rewarding and is designed for students of all abilities who are willing to work hard and achieve good grades. Students who are willing to develop their imaginative and creative responses to given themes will see themselves mature both artistically and personally over the two year period.

WHAT WILL I LEARN?

- The styles and techniques of other artists.
- How to develop your own ideas in 2D work using drawing, painting and graphics.
- How to develop your work into 3D, using ceramics, sculpture and other media.
- How to screen print, paint, draw, block-print, and work with a variety of fabrics and textiles.
- How to design and produce artwork using new exciting technologies.

Many students have found that you do not have to be the best at drawing, stitching or sculpture to gain a good GCSE grade in Art & Design. However, all students must be prepared to put a substantial amount of time into home learning or after school sessions to improve their skills in these areas.

Written work is involved in this course, but pieces of work for both coursework and examinations are all practical. If you complete all the coursework and home learning to a good standard, you can guarantee yourself a good GCSE grade!

At the end of the course, we assure you that you will be extremely proud of all your hard work and the artwork you have produced.

HOW CAN I OBTAIN A GOOD GCSE GRADE?

- Experiment with many different materials and techniques.

- Develop your own original ideas.
- Keep sketch books of your work.
- Collect and save all classwork and home learning pieces for assessment; these will be put into an exhibition.
- To complete the course you will need to take a practical exam using materials or processes of your choice.
- Use apps on your phone and/or ipad as photography tools, both to resource your work and produce digital imagery.

Assessment

All coursework over the two years is assessed and forms 60% of the final GCSE grade. The practical exam forms 40% of the final grade. Students will have several weeks to prepare before taking part in a 10 hour practical study session over 2 days.

UNIT 1 - NON EXAMINED ASSESSMENT [120 MARKS / 60% OF GCSE]

- Coursework: approx. 130 hours in class.
- Portfolio: selected from work undertaken during the two year course and including more than one project.

UNIT 2 - SET TASK PAPER [80 MARKS / 40% OF GCSE]

- Approx. 9 weeks preparation time.
- 10 hours of sustained focused study (final piece)
- Candidates respond to their chosen question or starting point from the Set Task.

Career Opportunities

Gaining a high grade at GCSE will provide a good foundation for A-Level Art, Level 3 BTEC in Art & Design, or any art or design related subject post-16. It can also help in a number of careers/courses, such as:

Advertising	Beauty / Cosmetics
Fashion / Clothing	Graphic Design
Media make-up	Hairstyling
Jewellery design	Set design (theatre)
Television	Animation



GCSE ART TEXTILES

Exam Board

Eduqas

Head of Department:

Mrs Woods (vws@altrinchamcollege.com)

Subject Overview

The Art Textiles course is an exciting, fun and creative course designed for students of all abilities. The course enables students to explore their interest and creativity using Textiles processes. Students are encouraged to be as creative as possible and focus on developing their practical skills through lots of practical sessions, to both inspire and enable them to realise their design ideas effectively.

Students are also taught how to communicate and express ideas, feelings and meanings through a variety of Textiles media. Each student has the choice of how to develop their GCSE coursework, whether they would prefer to produce a piece of Textiles art, or a fashion item/product.

WHAT WILL STUDENTS LEARN?

- How to plan and design your work using the work of other Fashion / Textiles designers as inspiration.
- How to use exciting specialist equipment and machinery.
- How to communicate and express ideas in creative ways.
- How to work with a wide range of materials and techniques.
- How and why other cultures and people use textiles in their world.

Many students have found that you do not have to be the best at drawing, stitching or sculpture to gain a good GCSE grade in an Art subject.

However, all students must be prepared to put a substantial amount of time into home learning or after school sessions to improve their skills in these areas.

HOW CAN STUDENTS OBTAIN A GOOD GCSE GRADE?

- Produce a series of experimental pieces to contribute to coursework.
- Maintain sketch books of your ideas for individual projects and for resources for later work.
- Demonstrate a mature approach to working independently and produce good quality home learning on a regular basis.
- Exhibit all your work in a professional manner and present your finished pieces to the highest standard.

Assessment

All coursework over the two years is assessed and forms 60% of the final GCSE grade. The practical exam forms 40% of the final grade. Students will have several weeks to prepare before taking part in a 10 hour practical study session over 2 days.

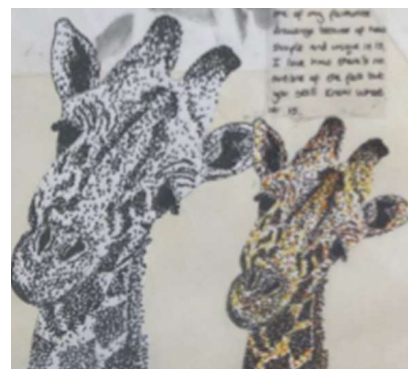
Written work is involved in this course, but pieces of work for both coursework and examinations are all practical. If you complete all the coursework and home learning to a good standard, you can guarantee yourself a good GCSE grade!

Career Opportunities

Gaining a high grade at GCSE will provide a good foundation for A-Level Art, the Level 3 BTEC Art & Design (Fashion Specialism), or any art or design related subject post-16.

It can help you get started in any number of careers such as:

Fashion Design	Interior Design
Theatre Work	Textile and Fabric Design
Printing Industry	Jewellery and Accessories



GCSE BUSINESS STUDIES

Exam Board

Edexcel

Head of Department:

Mr Mahmood (amd@altrinchamcollege.com)

Subject Overview

We interact with Businesses on a daily basis, from the apps we use on phones to the newsagent we buy our crisps from.

Business Studies is for those interested in what goes on 'behind the scenes' in businesses and want to learn how they operate. If you enjoy watching 'The Apprentice' or 'Dragon's Den', then this is the subject for you.

You need to want to know more about why people set up businesses, what makes them successful, and how they can perform better. The course will equip you with the transferable technical skills, knowledge and understanding to aid future academic qualifications.

Business Studies is more than just a subject for those who would like to set up a business in the future; we study the intrinsic details of why certain decisions are made by businesses and the consequences these decisions can have.



GCSE BUSINESS STUDIES REQUIRES STUDENTS TO:

- Actively engage in the study of Business.
- Develop as effective, independent, critical and reflective thinkers with enquiring minds.
- Distinguish facts and opinions, build arguments and make informed judgements.
- Develop and apply their knowledge,

understanding and skills to contemporary issues in local, national and global contexts.

- Appreciate the range of perspectives of different stakeholders in relation to business and economic activities.
- Consider the extent to which business and economic activity can be ethical and sustainable.

STUDENTS WILL DEVELOP SKILLS IN:

Problem solving Critical thinking

Literacy Numeracy Teamwork

You will learn how businesses promote themselves and keep customers happy. You will learn how businesses manage both their finances and the people who work for them.

BUSINESS TOPICS:

THEME 1 : INVESTIGATING A SMALL BUSINESS

- Topic 1.1 - Enterprise and entrepreneurship.
- Topic 1.2 - Spotting a business opportunity.
- Topic 1.3 - Putting a business idea into practice.
- Topic 1.4 - Making a business effective.
- Topic 1.5 - Understanding external influences on business.

THEME 2 : BUILDING A BUSINESS

- Topic 2.1 - Growing the business
- Topic 2.2 - Making marketing decisions
- Topic 2.3 - Making operational decisions
- Topic 2.4 - Making financial decisions
- Topic 2.5 - Making HR decisions

Assessment

Two written examinations, each 1 hour and 30 minutes. Each paper is worth 90 marks and 50% of the qualification.

Career Opportunities

As Business Studies develops your analytical skills, organisation and communication, it makes you suitable for most areas of work and means that career opportunities are vast. Career choices include:

Marketing	Retail
Teaching	Accountancy
Human Resources	Marketing / P.R.
Public Sector Administration	

GCSE COMPUTER SCIENCE

Exam Board

OCR

Head of Department:

Mr McWatt (mmt@altrinchamcollege.com)

Subject Overview

The course gives students an in-depth understanding of how computer technology works. Students will be familiar with the use of computers and related technology from other subjects and their ICT courses. However, Computer Science GCSE also gives an insight into what goes on 'behind the scenes', including computer programming - an area many students find absorbing.

The course will develop critical thinking, analytical skills and problem-solving skills through the study of computer programming.

The course is a fun and interesting way to develop these skills, which can then be transferred to other subjects and applied in day-to-day life. In this respect, the course will make an excellent preparation for students who want to study or work in areas that rely on these skills, especially where they are applied to technical problems.

This course requires higher level mathematical skills, so is only recommended for students working at a target grade of 5+ or above in Maths.

Assessment

The qualification is broken into two parts, requiring a mixture of theoretical and practical tasks:

UNIT 1: COMPUTER SYSTEMS -

EXTERNAL ASSESSMENT: 1½ HOURS (50% of the qualification)

The theoretical aspects of computing will be assessed in a traditional examination with a mixture of short, medium and long answer type questions.

UNIT 2: COMPUTATIONAL THINKING, ALGORITHMS AND PROGRAMMING -

EXTERNAL ASSESSMENT: 1½ HOURS (50% of the qualification)

This assessment consists of a series of tasks completed on screen. These tasks will assess students' practical application of computing knowledge and understanding.

Students will be given the opportunity to complete over 20 hours of practical programming - experience which will support them in the Unit 2 exam.

Career Opportunities

Computing involves everyone, in every walk of life, so your career opportunities are endless but include:

Software Development	Engineering
Games Programming	Science
Financial Management	Medicine
Resource Management	Graphics
Games Designer	Network Engineer
Software Developer	Systems Analyst
Medical Scientist	Computer Programmer

Areas for further study include Computer Science, Computer Forensics, Digital Design or Games Design.

Students who have taken GCSE Computer Science and who then progress to study the subject at A-Level or University will have a significant advantage over other students who have not studied this subject.



CREATIVE iMEDIA

(Cambridge National Certificate Level 1 & 2)

Exam Board
OCR

Head of Department:
Mr McWatt (mmt@altrinchamcollege.com)

Subject Overview

This qualification will encourage students to develop learning and practical skills that can be applied to real-life contexts and work situations. Students will learn to think creatively, innovatively, analytically, logically and critically and develop independence and confidence in using skills that would be relevant to the media industry and more widely. Students will learn how to design, plan, create and review digital media products which are fit for purpose meeting both client and target audience requirements.

Please note that this course cannot be chosen with any other media related course.

What will students learn?

The course will enable students to develop a range of skills which will allow them to create digital games, websites and digital graphics.

Digital Media is a key part of many areas of our everyday lives and vital to the UK economy. Production of digital media products is a requirement of almost every business so there is huge demand for a skilled and digitally literate workforce.

In addition, they will learn a range of skills to support their creation of digital products and their ability to plan and complete projects independently.

Course Outline

There are two mandatory units:

Creative iMedia in the media industry.

Assessed by an exam, 1hr 30mins - 40% of total grade.

You will learn about:

- the sectors, products and job roles that form the media industry

- the legal and ethical issues considered and the processes used to plan and create digital media products
- how media codes are used within the creation of media products to convey meaning, create impact and engage audiences.

Visual identity and digital graphics.

Assessed by coursework, 10-12 hours - 25% of total grade.

You will learn how to:

- develop brands and visual identities for clients
- apply the concepts of graphic design to create original digital graphics which incorporate your visual identity to engage a target audience
- learn a range of design skills using the Adobe Creative Suite.

AND one optional unit, either

- **Interactive digital media.**
Assessed by coursework - 35% of total grade. You will learn how to design and create products for chosen platforms.
- **Digital games.**
Assessed by coursework - 35% of total grade. You will learn how to plan, create and review digital games.

Career Opportunities

This qualification would be an excellent starting point for a student wishing to pursue a career in the creative digital / social media sector. Jobs in this sector include:

Games developer

Graphic designer

VFX artist

Web designer

UX designer



GCSE DRAMA

Exam Board
AQA

Head of Department:
Mrs Mrozinski
(mmi@altrinchamcollege.com)

Subject Overview

WHAT DOES THIS SUBJECT INVOLVE?

- Expressing yourself in an active, exciting way.
- Working in a group.
- Contributing your ideas and taking on board those of others.
- Exploring ideas by putting yourself in other people's shoes.
- Playing many parts in different imaginary situations.
- Creating your own drama work.
- Reading/studying plays written by other people.

To pass this course all students must have experience of going to the theatre and watching a live performance. We aim to take all students to the theatre once in Year 10 and once in Year 11.

Course Content and Assessment

COMPONENT 1: UNDERSTANDING DRAMA [40%]

WHAT IS ASSESSED?

- Students' knowledge and understanding of drama and theatre.
- Analysis of one set play.
- Analysis and evaluation of the work of live theatre makers.

HOW IS IT ASSESSED?

A written 'open book' exam (1 hour 45 mins) [80 marks].

COMPONENT 2: DEVISING DRAMA [40%]

WHAT IS ASSESSED?

- The process of creating devised drama.
- Performance of devised drama.
- Students' analysis and evaluation of their own work.

HOW IS IT ASSESSED?

Students complete a 'devising log' [60 marks] and perform their devised drama [20 marks].

COMPONENT 3: TEXT INTO PRACTICE [20%]

WHAT IS ASSESSED?

The performance of two extracts from one play.

HOW IS IT ASSESSED?

Performance of Extract 1 [20 marks] and performance of Extract 2 [20 marks].

This component is externally assessed by a visiting examiner.

Career Opportunities

This GCSE provides a solid foundation for further study at KS5, including A-Level Drama and BTEC Level Performing Studies at AC Sixth Form. It also offers a high-level of transferable skills relevant to a range of other courses; for example:

COGNITIVE SKILLS

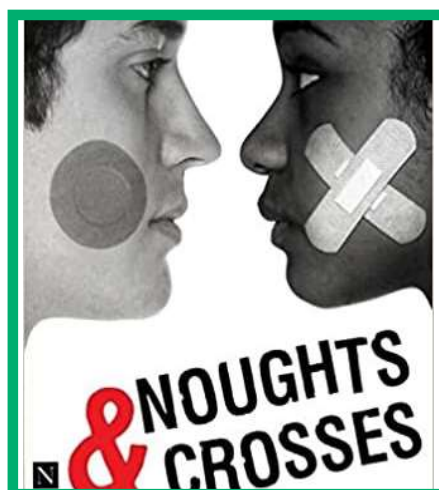
- Non-Routine Problem Solving
- Systems Thinking
- Critical Thinking
- ICT Literacy

INTERPERSONAL SKILLS

- Communication
- Relationship-Building Skills
- Collaborative Problem Solving

INTRAPERSONAL SKILLS

- Adaptability
- Self-Management
- Self-Development



GCSE FOOD PREPARATION AND NUTRITION

Exam Board
Eduqas

Head of Department:
Mrs South (jms@altrinchamcollege.com)

Subject Overview

**FOOD IS OUR COMMON GROUND,
A UNIVERSAL LANGUAGE AND ESSENTIAL
FOR LIFE, THEREFORE MAKE IT GOOD!**

At its heart, this qualification focuses on nurturing students' practical cookery skills whilst enabling them to make informed decisions about food, nutrition and healthy eating. It ultimately allows students to acquire knowledge in order to be able to feed themselves and others affordably and nutritiously, now and later in life.



BY STUDYING FOOD PREPARATION AND NUTRITION STUDENTS WILL:

- Be able to demonstrate effective and safe cooking skills by planning, preparing and cooking a variety of foods whilst using different cooking techniques and equipment.
- Understand the relationship between diet, nutrition and health.
- Understand the economic, environmental, ethical and socio-cultural influences on food issues.
- Understand and explore a range of ingredients and processes from different culinary traditions (traditional British and international) to inspire new ideas or modify existing recipes.

- Demonstrate knowledge and understanding of food safety considerations when preparing, processing, storing, cooking and serving food.

Assessment

1. Written examination: 50%
2. Two non-exam assessment tasks involving practical work: 50%
 - a. Food Investigation 15%
 - b. Food Preparation Assessment 35%

MINIMUM REQUIREMENT TO DO THIS COURSE:

Please note that there is a commitment required from home for students to provide ingredients for regular practical work.

There is also a commitment from students to engage with the theory side of the course – it is NOT just cooking.

Career Opportunities

This is an ideal GCSE course for any students who are attracted to a health or medical related career, interested in sport and health, or wishing to enter the catering, hospitality and food production industries.

It is also a life skill for people wanting to learn how to provide nutritious, healthy meals for themselves and their family.



GCSE GEOGRAPHY

Exam Board

AQA

Head of Department:

Mr Kevan (jkn@altrinchamcollege.com)

Subject Overview

The main aim of the Geography course is to prepare you for life in modern society. GCSE Geography is an exciting and motivating course designed to help students develop the abilities required to achieve exam success.

GEOGRAPHY IS LIFE!

This means issues including the following:

Theme 1: Living with the physical environment

Section A (3.1.1): The challenge of natural hazards

Section B (3.1.2): The living world

Section C (3.1.3): Physical landscapes in the UK

Theme 2: Challenges in the human environment

Section A (3.2.1): Urban issues and challenges

Section B (3.2.2): The changing economic world

Section C (3.2.3): The challenge of resource management

Theme 3: Geographical applications

Section A (3.3.1): Issue evaluation

Section B (3.3.2): Fieldwork

Geographical skills

3.4 Geographical skills

Assessment

The course is assessed through two exam papers covering themes 1 and 2 and a third paper assessing Geographical skills. The exams are made up of a variety of questions including multiple choice, short answer, levels of response and extended prose.

Students also need to undertake two geographical enquiries, both of which must include the use of primary data, collected as

part of a fieldwork exercise.

UNIT 1: Written exam: 1 hour and 30mins long (35% of final mark)

UNIT 2: Written exam: 1 hour and 30mins long (35% of final mark)

UNIT 3: Written exam: 1 hour (30% of final mark)

IS THERE ANYTHING ELSE I NEED TO KNOW?

Employers want people with the following attributes:

- Good communication skills
- Spatial awareness
- Numeracy and literacy
- Computer literacy

GEOGRAPHY PROVIDES THEM ALL!

Career Opportunities

GCSE Geography opens up a lot of career opportunities as it is a subject recognized by all employers and course organizers. Geography gives a balanced viewpoint which is good preparation for the world of work. Nationally, Geography has one of the best employment records in the country.

Possible career opportunities through Geography include:

Surveying	Police
Town Planning	Tourism
Civil Engineering	Retail
Pilot	Landscape Architecture
Cartography	Estate Agents

Geography offers a useful route to A-Level study, not just in Geography but also in other Humanities subjects and Sciences.



GCSE HISTORY

Exam Board

OCR - HISTORY B (Schools History Project)

Head of Department:

Mr Gillan (jgn@altrinchamcollege.com)

Subject Overview

This is a very enjoyable and varied course covering 800 years of British and world history - there really is something for everybody!

Each topic takes a slightly different approach to History but all ask students to consider important concepts like causation, consequence, significance and diversity.

We use traditional class teaching but the course also involves a lot of group discussion work. DVDs, pictures and political cartoons are used to find out about the past, across several periods, along with an interesting range of written sources and other historical evidence. The GCSE also has a local history dimension which allows students to study an important historical site closer to home.

Students develop transferable skills including the ability to analyse, evaluate, interpret, and think critically about evidence. All these are vital in the world of work. They also gain an understanding of up-to-date historical topics.

WHAT WILL I STUDY?

- How did Public Health change in Britain from 1250 to the present day?
- How did a female ruler (Elizabeth I) control England?
- How did white settlers change America?
- How did the Nazis change people's lives?
- Site Study: how has a chosen local site



changed over time (e.g. Beeston Castle, Styal Mill)?

Assessment

THERE ARE THREE WRITTEN PAPERS:

- **PAPER 1:** Thematic Study and British Depth Study (40% of the marks – 20% for each individual component)
- **PAPER 2:** History Around Us (Local History Study - 20% of the marks)
- **PAPER 3:** Period Study and World Depth Study (40% of the marks – 20% for each individual component).



Career Opportunities

History GCSE provides an excellent foundation for further studies at A-Level. The History department at Altrincham College has a 100% pass rate at A-Level.

Most people who study History at GCSE or beyond find it helps them to develop skills useful for a wide range of professional jobs, such as:

Journalism	Publishing	Media
Civil Service	Law	Police

Some people pursue careers which involve History directly, such as work in the Heritage industry e.g. working with the National Trust, museum and archive work, archaeology and teaching.

Aside from careers, many find that the study of History leads to a life-long interest in the subject. It could even help you win the top prize on 'Who Wants to be a Millionaire'!

GCSE MEDIA STUDIES

Exam Board
OCR

Head of Department (Acting):
Mr Smith (rbs@altrinchamcollege.com)

Subject Overview

This qualification enables students to critically study a range of products from a variety of media platforms. Students will begin by developing the key skills necessary to critically analyse and create media products. This will then lead onto the study of key institutional values associated with media industries, such as film marketing, television crime drama and the developing newspaper industry.

Assessment

The overall grade outcome is based on the assessment of the following:

- Two written exam papers, one of which involves viewing and analysing a moving image extract. Both exams take place at the end of Year 11.
- A coursework element which provides students with the opportunity to demonstrate their creativity, planning and production skills. Students produce one of the following: magazine, TV show extract, music video or social media site.

COURSE CONTENT:

Television and Promoting Media (35%)

In preparation for exam paper 1 (1 hr 45 mins), students will focus on the TV sector and engage with an in-depth study which covers both contemporary and historical television products. Secondly, students will focus on Promoting Media, studying media products such as video games, film and advertisements from the same global conglomerate producer.

Music and News (35%)

In preparation for exam paper 2 (1 hr 15 mins), students will engage with one in-depth study covering magazines, music

videos and radio. Students will focus on audiences, language, representations and institutions. Secondly, students will engage with one in-depth study covering online news, including social and participatory media, and both contemporary and historical newspapers.

Creating Media (30%)

In this coursework (NEA) element, students will plan, develop and create either a magazine, a TV show extract, a music video or a social media site. They will do this by applying knowledge and understanding of media language and media representations to express and communicate meaning to an intended audience.

MINIMUM REQUIREMENT TO UNDERTAKE THIS COURSE:

Students must be prepared to work hard on challenging tasks and, as with all subjects at this level, excellent attendance is essential. A genuine interest in the media industry would also be an advantage.

Career Opportunities

This course provides a solid foundation for further study at KS5, including Media-based A-Levels and BTECs, including Level 3 BTEC in Creative Media Production, offered at AC Sixth Form, or A-Level Media Studies.

The analytical and technical skills learned on this course also provide transferable skills which will be extremely valuable in the world of work, as well as in further study.



GCSE MUSIC

Exam Board

Eduqas

Head of Department:

Mr Madden (bmn@altrinchamcollege.com)

Subject Overview

GCSE Music is a really varied and interesting course which will not only continue to develop your musical skills but will also increase your ability to work as a creative independent student. It will also help develop your potential to pursue a career in the UK's booming creative industries.

Assessment

GCSE Music is 60% practical: 30% of the course is about performing music and 30% of the course is about composing your own music. The final 40% is about listening to and appraising music.

GCSE Music requires you to:

- Perform music to a good standard (two pieces, one in a group, the other solo).
- Compose interesting, satisfying pieces (two submissions).
- Listen to a wide spectrum of music and be able to understand it (listening exam).

Performance work can be done on any instrument, including the voice. If you take GCSE Music you must be prepared to practise your instrument regularly and to perform with the class.

You will be taught how to compose pieces of music and how to use relevant computer software (e.g. Cubase, BandLab and Sibelius).

You do not need to start the course feeling confident about reading music as this will be covered as part of the course.

If you want to study a course which gives you the freedom and flexibility to practise and create music, whilst also having an

academic slant, GCSE Music is for you.

By the end of the two years, you will be a more skilful, mature and qualified musician and be able to take on the challenges of music at Sixth Form.



Career Opportunities

Career opportunities with Music include:

Composer	Professional Musician
Teacher	Session Musician
Agent	Band Manager
Music Journalist	Music Critic
Music Therapist	DJ
Sound Technician	Recording Engineer
Piano Tuner	Performer
Festival Organiser	Arts Administrator
Youth Worker	Talent Scout
Concert Promoter	Vocal Coach
Armed Forces Musician	
Music Industry Promoter	
Instrument Technician	



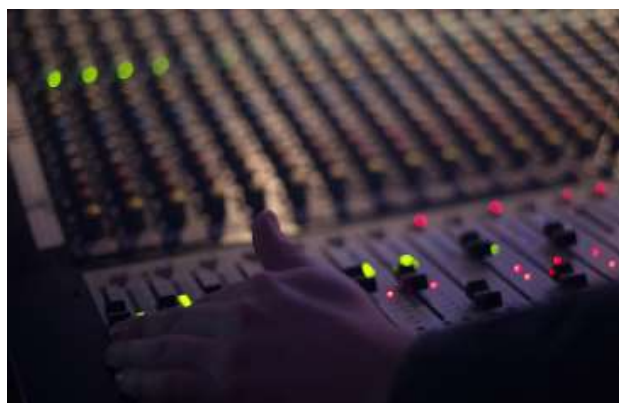
GCSE MUSIC TECHNOLOGY LEVEL 1 & 2 AWARD

Exam Board
NCFE

Head of Department:
Mr Madden (bmn@altrinchamcollege.com)

Subject Overview

NCFE Music Technology is a course which will train you in music production and sound engineering. By the end of the course you will understand how to run a recording studio. The course will increase your ability to work as a creative independent student and will also help develop your potential to pursue a career in the UK's booming creative industries.



Assessment

There are four units of work which are completed as portfolios and assessed internally. During the course, there is a written exam and a practical exam, which will require you to demonstrate your understanding of the music software on which you have trained.

The four units of work are:

- How to use the music software.
- Exploring different styles of music and creating a piece in a style of your choice.
- How to plan and run a recording session, using a live band.
- Music and Sound FX in video games, films, TV adverts, theatre and animations.

We will do some performance work, but the emphasis of the course is on developing your all-round music production skills.

You do not need to be able to read music to study this course.

If you want to study a course which gives you the freedom and flexibility to pursue a practical course whilst learning technical skills, NCFE Music Technology is the course for you!

By the end of the two years, you will be a more skilful, mature and qualified musician and be able to take on the challenges of music at Sixth Form.

Career Opportunities

Career opportunities with Music include:

Recording Engineer	Teacher
Session Musician	Agent
Band Manager	Music Journalist
Music Critic	Music Therapist
DJ	Sound Technician
Performer	Professional Musician
Festival Organiser	Arts Administrator
Youth Worker	Talent Scout
Concert Promoter	Vocal Coach
Armed Forces Musician	Composer
Music Industry Promoter	
Instrument Technician	



GCSE PHYSICAL EDUCATION

Exam Board AQA

Head of Department:
Mr Dennis (ads@altrinchamcollege.com)

Subject Overview

The GCSE PE course is taught over three lessons per week. Due to the high percentage of the GCSE Physical Education grade coming from theoretical work, two lessons out of three will be based in a classroom.

The GCSE PE theory section of the course is split into seven topic areas:

- Anatomy and Physiology
- Movement Analysis
- Physical Training
- Use of Data
- Socio-cultural influences
- Sports Psychology
- Health, fitness and well-being

During theory lessons students will be expected to develop the ability to analyse information, discuss the importance of physical activity, label anatomical diagrams, interpret information from graphs, and recall factual information. It is also vital that students learn how to apply their understanding of theoretical elements to specific practical activities.

It is expected that students will take part in a minimum of two sports outside of school to allow for them to improve their practical ability. GCSE students will also take part in practical core PE lessons in school. Students' performance at extra-curricular sports may need to be filmed to use as evidence.

Assessment

Two written exam papers [60%]

Students will sit two written exams in the summer of Year 11. These contain a combination of multiple choice, short and long answer questions, assessing all theoretical concepts covered in lessons.

Controlled assessment [40%]

Students will be assessed in a range of practical activities, in both team and individual

sports. The strongest three marks will make up 30% of the final grade. Students will also be required to carry out an analysis of performance in one of their chosen practical activities. This counts for 10% of the final grade.

Your sporting ability will be assessed in three different practical activities, either two team and one individual sport, or one team and two individual sports from the approved list of sports. The approved list can be found at: <https://www.aqa.org.uk/subjects/physical-education/gcse/physical-education-8582/scheme-of-assessment>.

IS THERE ANYTHING ELSE I NEED TO KNOW?

GCSE Physical Education is weighted heavily towards the **theory** of Physical Education, so students need to enjoy learning about the body and the importance of physical activity, not just taking part practically.

Career Opportunities

GCSE PE will equip students with the core knowledge they need to progress to further study or sport-based apprenticeships. GCSE PE will also benefit students who are considering a career in the sports industry or those wanting to study BTEC Sport at Sixth Form.

Possible career opportunities through PE and Sport include:

Sports Coach	PE Teacher
Physiotherapist	Sports Psychologist
Sports Nutritionist	Personal Trainer
Sports Journalist	Sports Massage
Sports Marketer	Sports Official
Sports Photographer	
Strength and Conditioning Coach	



GCSE RELIGIOUS STUDIES

Exam Board
Eduqas (Specification A)

Head of Department:
Ms Acharya (mah@altrinchamcollege.com)

Subject Overview

WHO IS BEST SUITED TO THIS COURSE?

- Students who enjoy exploring and discussing modern issues such as war, terrorism, abortion, racism, euthanasia, sexism, crime, drugs and human rights.
- Students who are good at listening and taking an active part in discussions.
- Students with sound literacy skills - the course and examinations involve significant essay writing.
- Students who are interested in other cultures and religious views.

WHAT SKILLS WILL THIS COURSE HELP STUDENTS TO DEVELOP?

- Empathy, tolerance and understanding of religious and non-religious world views. It allows students to understand others' opinions and accept that difference of opinion is an integral part of adult life.
- Ability to engage with questions of belief, value, meaning, purpose, truth, and their influence on human life.
- Ability to reflect on and develop their own values, beliefs and attitudes in the light of what they have learned.
- Awareness of the contribution they can make towards adult life in a pluralistic and global society.

What are the potential challenges?

The written work is quite demanding. Students must be willing and able to read and retain a considerable amount of information.

What do students enjoy most?

Investigating and discussing a diverse range of moral issues, including capital punishment, abortion, drug abuse and genetic engineering.

What other subjects would complement this course?

History, Geography, Science, English Lit/Lang.

Assessment

There will be three written examinations at the end of the two year course:

PAPER 1: Religious Philosophical and Ethical Studies in the Modern World [2 hour exam, 50% of qualification]

Students must study all four themes:

- Relationships
- Life and Death
- Good and Evil
- Human Rights

PAPER 2: Study of Christianity [1 hour exam, 25% of qualification]: Beliefs, teachings and practices of Christianity.

PAPER 3: Study of Hinduism [1 hour exam, 25% of qualification]: Beliefs, teachings and practices of Hinduism.

Career Opportunities

Studying RE will give you a better understanding of the world, both of world religions and ethical issues. You will also gain valuable skills in debating, discussion and research. GCSE RE can lead to further study in:

Philosophy and Ethics	Sociology
Law	Citizenship
Government and Politics	Medicine

and would be valuable in many careers, including:

Counsellor	Public Service worker
Social Worker	Teacher
Personnel Officer	Race Relations Officer
Police Officer	Doctor
Town Planner	Housing Officer
Care Worker	Nursery Nurse
Lawyer	Hospitality worker
Probation Officer	



GCSE SPANISH

Exam Board
AQA

Head of Department (Acting):
Mrs Casey (ccy@altrinchamcollege.com)
Head of Department:
Mrs Painter (npr@altrinchamcollege.com)

Subject Overview

THE AIM OF THE GCSE COURSE IS TO ENABLE YOU TO UNDERSTAND AND TO COMMUNICATE CONFIDENTLY IN SPANISH.

The course covers three distinct themes. Students are expected to understand and provide information and opinions about these themes relating to their own experiences and those of other people, including people in countries and communities where Spanish is spoken.

COURSE CONTENT:

Theme 1: Identity and culture

Theme 2: Local, national, international and global areas of interest

Theme 3: Current and future study and employment

Any student who chooses GCSE Spanish must be prepared to study extensively both at home and during lessons.

ASSESSMENT

Assessment in listening, speaking and writing is by examination at the end of Year 11. Candidates are entered for foundation tier or higher tier papers, according to their aptitude and progress in the subject.

THERE ARE 4 EXAMS IN TOTAL:

Paper 1 – Listening Exam (25% of GCSE)

Paper 2 – Speaking Exam (25% of GCSE)

Paper 3 – Reading Exam (25% of GCSE)

Paper 4 – Writing Exam (25% of GCSE)

A wide range of materials are used to practise the four skill areas of speaking, listening, reading and writing. Resources include the Viva course on Active Learn, audio CDs, DVDs, a range of computer software and access to online resources.

You are encouraged to use ICT to improve your aptitude in all skill areas and to practise situational dialogue and conversation in the language laboratory.

A dictionary is essential for class work, written assessments, home learning and examination preparation. It is therefore recommended that you purchase a Spanish-English bilingual dictionary before the start of Year 10.

Career Opportunities

What could I do next with GCSE Spanish?

Many employers actively recruit candidates who can speak an additional language. Some Universities and colleges insist on candidates studying a language at GCSE as part of their entry requirements. The GCSE course is also an excellent foundation for studying A-Level Spanish.

Career opportunities with a language include:

International Law

Importing

Cruise Ship Work

Exporting

Hotel Management

Immigration

Language Teaching

Travel & Tourism

Interpreting

Au Pair

Hotel Reception Work and many more.





T-Levels are a brand new qualification designed to give you a head start towards the future you want. They follow GCSEs and are equivalent to 3 A Levels.

The 2-year T Level qualification brings classroom and work placement together on a course designed with employers and businesses.

You will spend 80% of your time in the classroom and 20% on a 45-day placement, to give you the skills and knowledge employers are looking for.

Your T Level will help you step straight into your chosen career, a degree or an apprenticeship.

For more information visit: www.gov.uk/dfe/t-levels.

“Our vision is to nurture well-rounded citizens of the future who are knowledgeable, happy and resilient so that they make a valuable contribution to the world in which they live, and are empowered to make informed and positive life choices.”



WEDNESDAY 2 MARCH 2022

INTRODUCTORY PRESENTATION

OPTIONS BOOKLET AND

HEAD OF DEPARTMENT PRESENTATIONS

“GO LIVE” ON MS TEAMS (‘INTAKE 2019)

PLUS OPTIONS FORM AVAILABLE TO COMPLETE (ONLINE)

TUESDAY 8 MARCH 2022

PARENT/CARER INFORMATION EVENING (VIA SCHOOL CLOUD)

THURSDAY 10 MARCH 2022

OPTIONS Q&A EVENT (OPTIONAL) VIA MS TEAMS

MONDAY 14 MARCH 2022

DEADLINE TO SUBMIT OPTION FORMS ONLINE

NOTES

