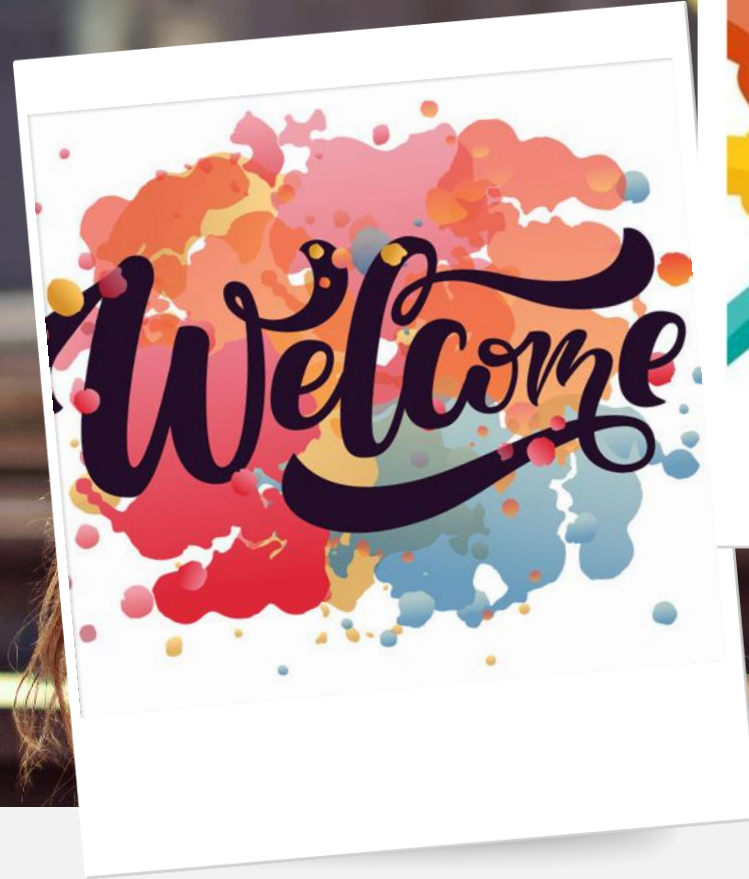


Sociology

Year 11 information
Mrs Ledward



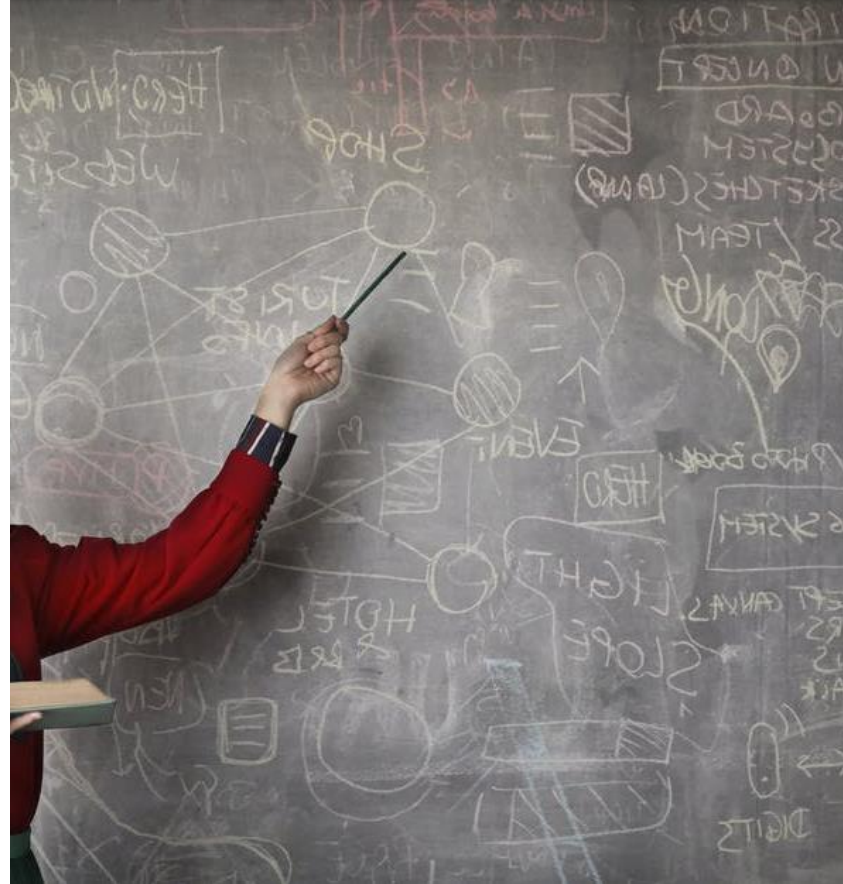
What Sociology is...

The study of society and social issues.

Analysis of the social structures and forces around us.

Taking different viewpoints on why the social world is how it is.

Researching topics using a variety of research methods and data collection strategies.



Sociology

What it is not...

The study of individual human behaviour.

Common-sense ideas about the world.

Indisputable facts about society.

An 'easy option'.



In answer to common questions...

How is the course structured and **what will I learn?**

- Introduction to sociological theory and concepts (synoptic)
 - Socialisation, Culture and Identity (Paper 1)
 - Youth Subculture (Paper 1 Option)
 - Research Methods (Paper 2)
 - Social Inequality (Paper 2)
 - Globalisation and the Digital World (Paper 3)
 - Crime and Deviance (Paper 3 Option)
-
- Sociological concepts 'build' on each other, your earlier learning in Year 12 will feed into the next topics throughout the course.



Sociology Concepts

- You will learn about the **core theories** of Functionalism, Marxism & Neo-Marxism, Feminism, New Right, Interactionism, Realism and Postmodernism.
- You will apply these to **key concepts**, such as the reasons for youth subculture; demographics of social inequality; the nature of corporate crime; the role of globalisation and digital media in social change.
- You will understand how to **support your arguments** with sociological research, such as Oakley's studies of the construction of femininity; official statistics for crime rates; demographic data for poverty; Willis's anti-school subculture.
- You will be able to draw **links between issues taught and contemporary society**, such as the gender pay gap; child poverty; age discrimination; political policy making; fake news and propaganda.



SOCIOLOGIST TRAITS

ANALYTICAL

REFLECTIVE

CURIOUS

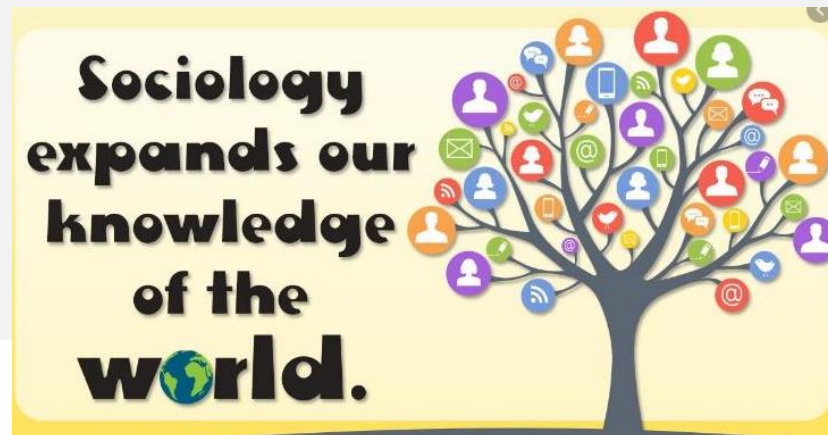
RIGOROUS

OPEN-MINDED



To study Sociology

- you need a passion to develop an understanding **social issues** from different perspectives to **critique** explanations of the world around you and **critically assess** the nature of society.
- you need to embrace all topic areas, be confident in **essay writing**, enjoy **wider reading** and **research**, have a good **awareness of current affairs**.
- You also need a keen interest in **debates in society**, **issues in contemporary society** and **social policy**.
- Sociology students should want to learn the skills and concepts necessary to not just take social issues and processes at face value, but to **challenge** what they see and read.



In answer to common questions...

I have **never studied** Sociology before, will I be ok?

Yes – you will be absolutely fine!

What do I do to guide you with this?

- I provide you with comprehensive booklets for each topic.
- You will have to learn new concepts quite quickly, I will give you structured tasks to help you with this.

What can you do to prepare?

- Sociology usually suits students with a keen interest in society or politics, it develops the skills you may have from GCSE subjects such as Religious Studies, History, English Literature, Geography.
- Keep up to date with social issues that are reported in the news.
- Download some news apps (BBC, The Guardian are free) and read some of the articles.
- Make sure you are aware of current affairs to help with examples and application.
- Read around the main concepts over the summer before you start.



Sociology Lessons

- **Booklets** to support each topic area containing lots of supporting notes, activities, and tasks.
- **Discussions** in class with peers and teachers on the understanding you have developed and the critiques of the ideas.
- **Applying** what you know to wider social issues and demonstrating how multiple theoretical concepts can explain the same social issue.
- **Independent research** of contemporary topics and current affairs to make connections between theory and modern society.
- **Examination preparation**, assessment skills building and practice questions.



In answer to common questions...

How is the course assessed?

Three written exams at the end of Year 13, each containing a range of different question types which will included extended essays and analysis of unseen source material.

Component		Marks	Duration	Weighting
Component 1	SOCIALISATION, CULTURE AND IDENTITY	90	1½ hours	30%
	Section A Introducing socialisation, culture and identity Compulsory questions, some based on source material			
	Section B Options Select one option from a choice of three. Within an option, there are three questions			
Component 2	RESEARCHING AND UNDERSTANDING SOCIAL INEQUALITIES	105	2¼ hours	35%
	Section A Research methods and researching social inequalities Compulsory questions, some based on source material			
	Section B Understanding social inequalities Compulsory extended response questions			
Component 3	DEBATES IN CONTEMPORARY SOCIETY	105	2¼ hours	35%
	Section A Globalisation and the digital social world Compulsory questions, some source-based			
	Section B Options Select one option from a choice of three. Within an option there are three questions			



Career Prospects

Law, education, government, journalism, civil service, social work, police, business, social research, business.



University Destinations

London South Bank University : Children's Nursing

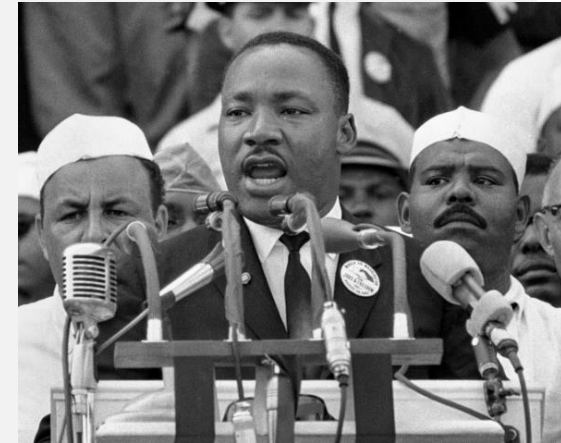
Keele University: Criminology and Education

Sheffield University: Marketing, Communications & Advertising

Birmingham University: Criminology

University of Derby: Occupational Therapy

Manchester University: Sociology



Thank you!

If you have any further queries about A Level Sociology and the nature of the content included, you could have a look at the following sources:

OCR Specification: <https://www.ocr.org.uk/Images/170212-specification-accredited-a-level-gce-sociology.pdf>

Tutor2U <https://www.tutor2u.net/sociology>



Any questions? Email cld@altrinchamcollege.com

